

For Research Use Only

PCARE Recombinant antibody

Catalog Number: 83364-4-RR



Basic Information

Catalog Number: 83364-4-RR	GenBank Accession Number: NM_001029883	Purification Method: Protein A purification
Size: 100ul , Concentration: 1000 ug/ml by Nanodrop;	GeneID (NCBI): 388939	CloneNo.: 240352F6
Source: Rabbit	UNIPROT ID: A6NGG8	Recommended Dilutions: WB 1:5000-1:50000 IHC 1:500-1:2000 IF-P 1:500-1:2000
Isotype: IgG	Full Name: chromosome 2 open reading frame 71	
Immunogen Catalog Number: AG34774	Calculated MW: 140 kDa	
	Observed MW: 140 kDa	

Applications

Tested Applications: WB, IHC, IF-P, ELISA	Positive Controls:
Species Specificity: human, mouse	WB : mouse retina tissue, mouse eye tissue
Note-IHC: suggested antigen retrieval with TE buffer pH 9.0; (*) Alternatively, antigen retrieval may be performed with citrate buffer pH 6.0	IHC : mouse eye tissue,
	IF-P : mouse eye tissue,

Background Information

C2orf71/PCARE (photoreceptor cilium actin regulator) is a retina-specific protein consisting of 1289 amino acids with a predicted molecular weight of 140 kDa. PCARE is predicted to be myristoylated and palmitoylated at its N terminus and plays an important role in delivering actin-associated components to the base of the photoreceptor OSs to regulate the initial development of OS disks (PMID: 32312818, 35253837).

Storage

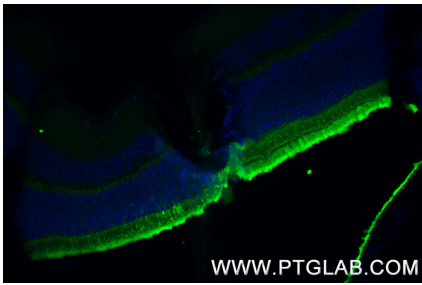
Storage:
Store at -20°C. Stable for one year after shipment.
Storage Buffer:
PBS with 0.02% sodium azide and 50% glycerol pH 7.3.
Aliquoting is unnecessary for -20°C storage

*** 20ul sizes contain 0.1% BSA

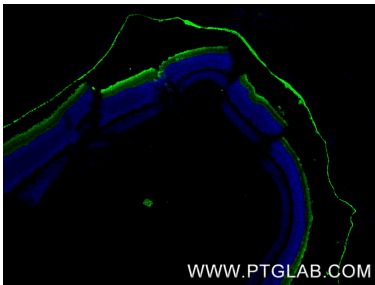
For technical support and original validation data for this product please contact:
T: 1 (888) 4PTGLAB (1-888-478-4522) (toll free in USA), or 1(312) 455-8498 (outside USA)
E: proteintech@ptglab.com
W: ptglab.com

This product is exclusively available under Proteintech Group brand and is not available to purchase from any other manufacturer.

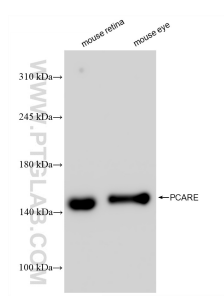
Selected Validation Data



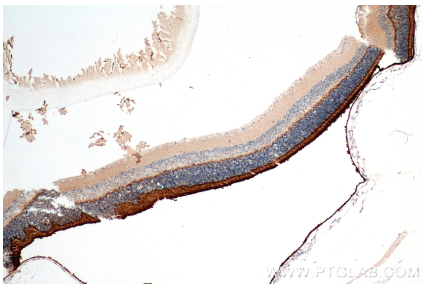
Immunofluorescent analysis of (4% PFA) fixed paraffin-embedded mouse eye tissue using PCARE antibody (83364-4-RR, Clone: 240352F6) at dilution of 1:1000 and CoraLite®488-Conjugated Goat Anti-Rabbit IgG(H+L) (SA00013-2). Heat mediated antigen retrieval with Tris-EDTA buffer (pH 9.0).



Immunofluorescent analysis of (4% PFA) fixed paraffin-embedded mouse eye tissue using PCARE antibody (83364-4-RR, Clone: 240352F6) at dilution of 1:1000 and CoraLite®488-Conjugated Goat Anti-Rabbit IgG(H+L) (SA00013-2). Heat mediated antigen retrieval with Tris-EDTA buffer (pH 9.0).



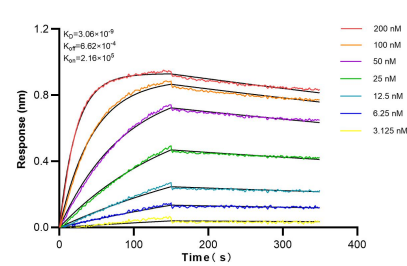
Various lysates were subjected to SDS PAGE followed by western blot with 83364-4-RR (PCARE antibody) at dilution of 1:10000 incubated at room temperature for 1.5 hours.



Immunohistochemical analysis of paraffin-embedded mouse eye tissue slide using 83364-4-RR (PCARE antibody) at dilution of 1:1000 (under 10x lens). Heat mediated antigen retrieval with Tris-EDTA buffer (pH 9.0).



Immunohistochemical analysis of paraffin-embedded mouse eye tissue slide using 83364-4-RR (PCARE antibody) at dilution of 1:1000 (under 40x lens). Heat mediated antigen retrieval with Tris-EDTA buffer (pH 9.0).



Bi-layer interferometry (BLI) kinetic assays of 83364-4-RR against Human PCARE were performed. The affinity constant is 3.06 nM.