

For Research Use Only

# Mouse Afp Recombinant antibody, PBS Only (Detector)

Catalog Number: 83367-2-PBS



## Basic Information

### Catalog Number:

83367-2-PBS

### Size:

100ug, Concentration: 1 mg/ml by Nanodrop;

### Source:

Rabbit

### Isotype:

IgG

### GenBank Accession Number:

NM\_007423.4

### GeneID (NCBI):

11576

### UNIPROT ID:

P02772

### Full Name:

alpha fetoprotein

### Calculated MW:

67KD

### Observed MW:

67-72 kDa

### Purification Method:

Protein A purification

### CloneNo.:

240232C7

## Applications

### Tested Applications:

WB, Cytometric bead array, Sandwich ELISA, Indirect ELISA, Sample test

### Species Specificity:

mouse

## Product Information

83367-2-PBS targets Afp as part of a matched antibody pair:

MP00395-2: 83367-4-PBS capture and 83367-2-PBS detection (validated in Cytometric bead array)

MP00395-4: 83367-5-PBS capture and 83367-2-PBS detection (validated in Sandwich ELISA)

Unconjugated rabbit recombinant monoclonal antibody in PBS only (BSA and azide free) storage buffer at a concentration of 1 mg/mL, ready for conjugation. Created using Proteintech's proprietary in-house recombinant technology. Recombinant production enables unrivalled batch-to-batch consistency, easy scale-up, and future security of supply.

This conjugation ready format makes antibodies ideal for use in many applications including: ELISAs, multiplex assays requiring matched pairs, mass cytometry, and multiplex imaging applications. Antibody use should be optimized by the end user for each application and assay.

## Background Information

Alpha-fetoprotein (AFP) is one of the earliest proteins to be synthesised by the embryonic liver. The synthesis of AFP decreases dramatically after birth and only trace amounts are expressed in the adult liver. High serum AFP concentrations are also found in connection with primary liver cancer and teratocarcinoma.

## Storage

### Storage:

Store at -80°C.

### Storage Buffer:

PBS Only

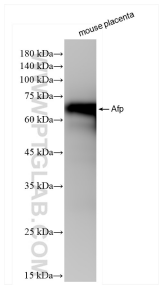
For technical support and original validation data for this product please contact:

T: 1 (888) 4PTGLAB (1-888-478-4522) (toll free in USA), or 1(312) 455-8498 (outside USA)

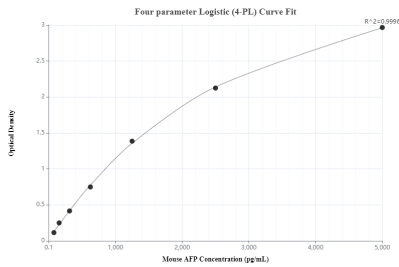
E: [proteintech@ptglab.com](mailto:proteintech@ptglab.com)  
W: [ptglab.com](http://ptglab.com)

This product is exclusively available under Proteintech Group brand and is not available to purchase from any other manufacturer.

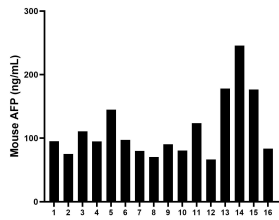
Selected Validation Data



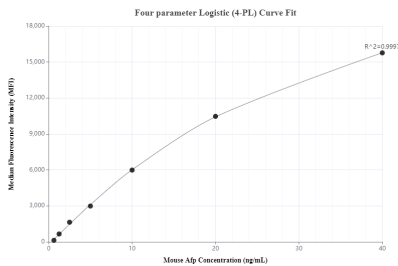
mouse placenta tissue were subjected to SDS PAGE followed by western blot with 83367-2-RR (Afp antibody) at dilution of 1:5000 incubated at room temperature for 1.5 hours. This data was developed using the same antibody clone with 83367-2-PBS in a different storage buffer formulation.



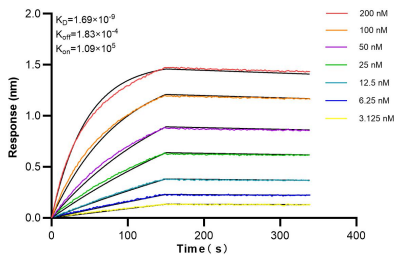
Sandwich ELISA standard curve of MP00395-4, Mouse AFP Monoclonal Matched Antibody Pair - PBS only. 83367-5-PBS was coated to a plate as the capture antibody and incubated with serial dilutions of standard Eg0670. 83367-2-PBS was HRP conjugated as the detection antibody. Range: 78.125-5000 pg/mL.



Serum of sixteen individual healthy mice were measured. The mouse AFP concentration of detected samples was determined to be 113.4 ng/mL with a range of 66.5-245.7 ng/mL.



Cytometric bead array standard curve of MP00395-2, MOUSE AFP Recombinant Matched Antibody Pair, PBS Only. Capture antibody: 83367-4-PBS. Detection antibody: 83367-2-PBS. Standard: Eg0670. Range: 0.625-40 ng/mL.



Biolayer interferometry (BLI) kinetic assays of 83367-2-RR against Mouse Afp were performed. The affinity constant is 1.69 nM.