

For Research Use Only

Mouse Afp Recombinant antibody, PBS Only (Capture)

Catalog Number:83367-5-PBS



Basic Information

Catalog Number: 83367-5-PBS	GenBank Accession Number: NM_007423.4	Purification Method: Protein A purification
Size: 100ug, Concentration: 1 mg/ml by Nanodrop;	GeneID (NCBI): 11576	CloneNo.: 240232C5
Source: Rabbit	UNIPROT ID: P02772	
Isotype: IgG	Full Name: alpha fetoprotein	
	Calculated MW: 67KD	

Applications

Tested Applications:
Cytometric bead array, Sandwich ELISA, Indirect ELISA, Sample test

Species Specificity:
mouse

Product Information

83367-5-PBS targets Afp as part of a matched antibody pair:

MP00395-3: 83367-5-PBS capture and 83367-3-PBS detection (validated in Cytometric bead array)

MP00395-4: 83367-5-PBS capture and 83367-2-PBS detection (validated in Sandwich ELISA)

Unconjugated rabbit recombinant monoclonal antibody in PBS only (BSA and azide free) storage buffer at a concentration of 1 mg/mL, ready for conjugation. Created using Proteintech's proprietary in-house recombinant technology. Recombinant production enables unrivalled batch-to-batch consistency, easy scale-up, and future security of supply.

This conjugation ready format makes antibodies ideal for use in many applications including: ELISAs, multiplex assays requiring matched pairs, mass cytometry, and multiplex imaging applications. Antibody use should be optimized by the end user for each application and assay.

Storage

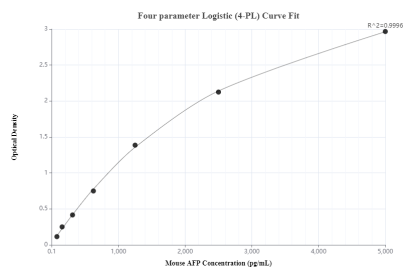
Storage:
Store at -80°C.

Storage Buffer:
PBS Only

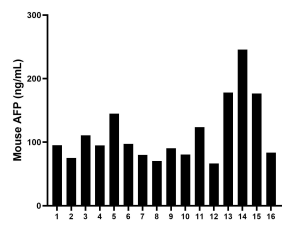
For technical support and original validation data for this product please contact:
T: 1 (888) 4PTGLAB (1-888-478-4522) (toll free in USA), or 1(312) 455-8498 (outside USA)
E: proteintech@ptglab.com
W: ptglab.com

This product is exclusively available under Proteintech Group brand and is not available to purchase from any other manufacturer.

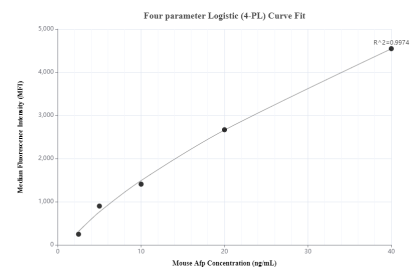
Selected Validation Data



Sandwich ELISA standard curve of MP00395-4, Mouse AFP Monoclonal Matched Antibody Pair - PBS only. 83367-5-PBS was coated to a plate as the capture antibody and incubated with serial dilutions of standard Eg0670. 83367-2-PBS was HRP conjugated as the detection antibody. Range: 78.125-5000 pg/mL



Serum of sixteen individual healthy mice were measured. The mouse AFP concentration of detected samples was determined to be 113.4 ng/mL with a range of 66.5-245.7 ng/mL



Cytometric bead array standard curve of MP00395-3, MOUSE AFP Recombinant Matched Antibody Pair, PBS Only. Capture antibody: 83367-5-PBS. Detection antibody: 83367-3-PBS. Standard: Eg0670. Range: 2.5-40 ng/mL