

For Research Use Only

Mouse ICOSLG/B7-H2/CD275 Recombinant antibody, PBS Only (Capture/Detector)

Catalog Number: 83375-2-PBS



Basic Information

Catalog Number:

83375-2-PBS

Size:

100ug, Concentration: 1 mg/ml by
Nanodrop;

Source:

Rabbit

Isotype:

IgG

GenBank Accession Number:

NM_015790.3

GeneID (NCBI):

50723

UNIPROT ID:

Q9JHJ8-1

Full Name:

icos ligand

Calculated MW:

36 kDa

Purification Method:

Protein A purification

CloneNo.:

240243G5

Applications

Tested Applications:

WB, Cytometric bead array, Sandwich ELISA, Indirect
ELISA, Sample test

Species Specificity:

mouse

Product Information

83375-2-PBS targets ICOSLG/B7-H2/CD275 as part of a matched antibody pair:

MP00376-1: 83375-2-PBS capture and 83375-3-PBS detection (validated in Cytometric bead array)

MP00376-2: 83375-1-PBS capture and 83375-2-PBS detection (validated in Cytometric bead array)

MP00376-4: 83375-5-PBS capture and 83375-2-PBS detection (validated in Sandwich ELISA)

Unconjugated rabbit recombinant monoclonal antibody in PBS only (BSA and azide free) storage buffer at a concentration of 1 mg/mL, ready for conjugation. Created using Proteintech's proprietary in-house recombinant technology. Recombinant production enables unrivalled batch-to-batch consistency, easy scale-up, and future security of supply.

This conjugation ready format makes antibodies ideal for use in many applications including: ELISAs, multiplex assays requiring matched pairs, mass cytometry, and multiplex imaging applications. Antibody use should be optimized by the end user for each application and assay.

Storage

Storage:

Store at -80°C.

Storage Buffer:

PBS Only

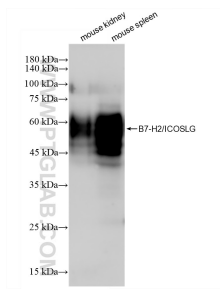
For technical support and original validation data for this product please contact:

T: 1 (888) 4PTGLAB (1-888-478-4522) (toll free
in USA), or 1(312) 455-8498 (outside USA)

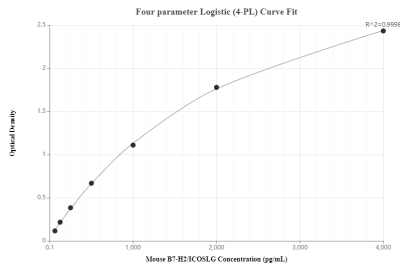
E: proteintech@ptglab.com
W: ptglab.com

This product is exclusively available under Proteintech Group brand and is not available to purchase from any other manufacturer.

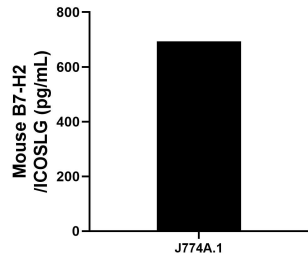
Selected Validation Data



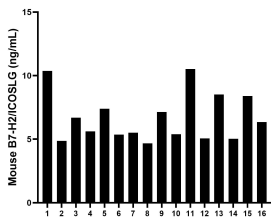
Various lysates were subjected to SDS PAGE followed by western blot with 83375-2-RR (B7-H2/ICOSLG antibody) at dilution of 1:500 incubated at room temperature for 1.5 hours. This data was developed using the same antibody clone with 83375-2-PBS in a different storage buffer formulation.



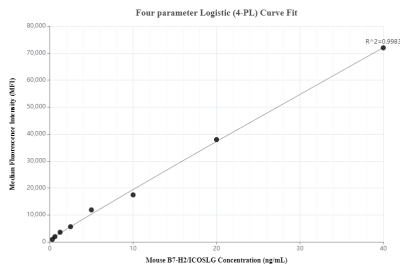
Sandwich ELISA standard curve of MP00376-4, Mouse ICOSLG/B7-H2/CD275 Monoclonal Matched Antibody Pair - PBS only. 83375-5-PBS was coated to a plate as the capture antibody and incubated with serial dilutions of standard Eg0923. 83375-2-PBS was HRP conjugated as the detection antibody. Range: 62.5-4000 pg/mL



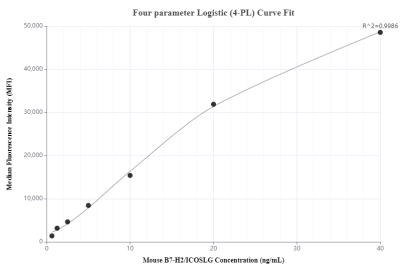
J774A.1 mouse reticulum cell sarcoma macrophage cells were cultured in DMEM supplemented with 10% fetal bovine serum, 2.5 mM L-glutamine, 100 U/mL penicillin and 100 µg/mL streptomycin sulfate. An aliquot of the cell culture supernatant was removed, assayed for mouse ICOSLG/B7-H2/CD275 and measured 692.8 pg/mL



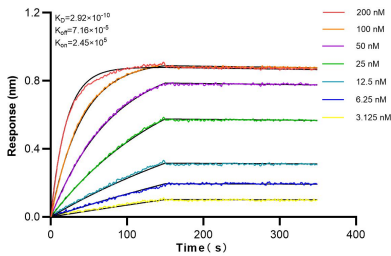
Serum of sixteen individual healthy mice were measured. The mouse ICOSLG/B7-H2/CD275 concentration of detected samples was determined to be 6.7 ng/mL with a range of 4.7 - 10.5 ng/mL



Cytometric bead array standard curve of MP00376-1, MOUSE ICOSLG/B7-H2/CD275 Recombinant Matched Antibody Pair, PBS Only. Capture antibody: 83375-2-PBS. Detection antibody: 83375-3-PBS. Standard: Eg0923. Range: 0.313-40 ng/mL



Cytometric bead array standard curve of MP00376-2, MOUSE ICOSLG/B7-H2/CD275 Recombinant Matched Antibody Pair, PBS Only. Capture antibody: 83375-1-PBS. Detection antibody: 83375-2-PBS. Standard: Eg0923. Range: 0.625-40 ng/mL



Biolayer interferometry (BLI) kinetic assays of 83375-2-RR against Mouse B7-H2/ICOSLG were performed. The affinity constant is 0.292 nM.