

For Research Use Only

# RPL29 Recombinant antibody, PBS Only



Catalog Number: **83377-2-PBS**

## Basic Information

<b>Catalog Number:</b> 83377-2-PBS	<b>GenBank Accession Number:</b> BC008926	<b>Purification Method:</b> Protein A purification
<b>Size:</b> 100ug, Concentration: 1 mg/ml by Nanodrop;	<b>GeneID (NCBI):</b> 6159	<b>CloneNo.:</b> 240062A3
<b>Source:</b> Rabbit	<b>UNIPROT ID:</b> P47914	
<b>Isotype:</b> IgG	<b>Full Name:</b> ribosomal protein L29	
<b>Immunogen Catalog Number:</b> AG34100	<b>Calculated MW:</b> 159 aa, 18 kDa	

## Applications

**Tested Applications:**  
WB, IF, Indirect ELISA

**Species Specificity:**  
Human

## Storage

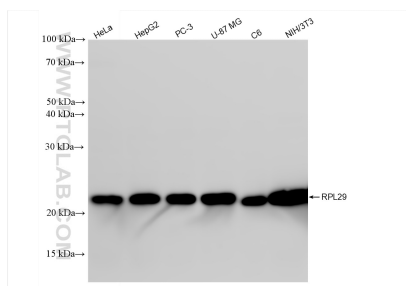
**Storage:**  
Store at -80°C.

**Storage Buffer:**  
PBS Only

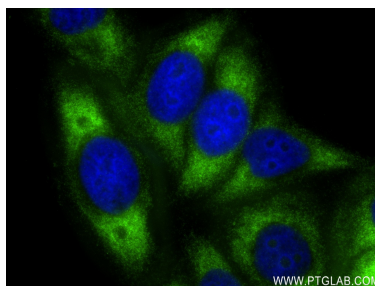
For technical support and original validation data for this product please contact:  
T: 1 (888) 4PTGLAB (1-888-478-4522) (toll free in USA), or 1(312) 455-8498 (outside USA)  
E: [proteintech@ptglab.com](mailto:proteintech@ptglab.com)  
W: [ptglab.com](http://ptglab.com)

This product is exclusively available under Proteintech Group brand and is not available to purchase from any other manufacturer.

## Selected Validation Data



Various lysates were subjected to SDS PAGE followed by western blot with 83377-2-RR (RPL29 antibody) at dilution of 1:10000 incubated at room temperature for 1.5 hours. This data was developed using the same antibody clone with 83377-2-PBS in a different storage buffer formulation.



Immunofluorescent analysis of (-20°C Ethanol) fixed HepG2 cells using RPL29 antibody (83377-2-RR, Clone: 240062A3 ) at dilution of 1:400 and CoraLite® 488-Conjugated AffiniPure Goat Anti-Rabbit IgG(H+L) (SA00013-2). This data was developed using the same antibody clone with 83377-2-PBS in a different storage buffer formulation.