

For Research Use Only

SYCP1 Recombinant antibody, PBS Only



Catalog Number: 83382-1-PBS

Basic Information

Catalog Number: 83382-1-PBS	GenBank Accession Number: BC126266	Purification Method: Protein A purification
Size: 100ug , Concentration: 1 mg/ml by Nanodrop;	GeneID (NCBI): 6847	CloneNo.: 240033E3
Source: Rabbit	UNIPROT ID: Q15431	
Isotype: IgG	Full Name: synaptonemal complex protein 1	
Immunogen Catalog Number: AG16005	Calculated MW: 976 aa, 114 kDa	

Applications

Tested Applications:
WB, Indirect ELISA

Species Specificity:
Human

Storage

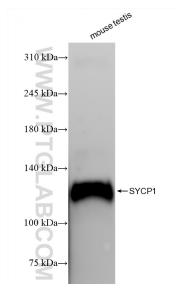
Storage:
Store at -80°C.

Storage Buffer:
PBS Only

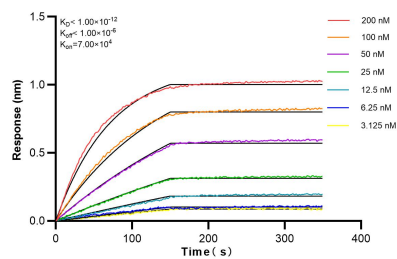
For technical support and original validation data for this product please contact:
T: 1 (888) 4PTGLAB (1-888-478-4522) (toll free in USA), or 1(312) 455-8498 (outside USA)
E: proteintech@ptglab.com
W: ptglab.com

This product is exclusively available under Proteintech Group brand and is not available to purchase from any other manufacturer.

Selected Validation Data



mouse testis tissue were subjected to SDS PAGE followed by western blot with 83382-1-RR (SYCP1 antibody) at dilution of 1:2000 incubated at room temperature for 1.5 hours. This data was developed using the same antibody clone with 83382-1-PBS in a different storage buffer formulation.



Biolayer interferometry (BLI) kinetic assays of 83382-1-RR against Human SYCP1 were performed. The affinity constant is below 1 pM.