

For Research Use Only

SYCP1 Recombinant antibody

Catalog Number: 83382-1-RR



Basic Information

Catalog Number:

83382-1-RR

Size:

100ul , Concentration: 1000 ug/ml by Nanodrop;

Source:

Rabbit

Isotype:

IgG

Immunogen Catalog Number:

AG16005

GenBank Accession Number:

BC126266

GeneID (NCBI):

6847

UNIPROT ID:

Q15431

Full Name:

synaptonemal complex protein 1

Calculated MW:

976 aa, 114 kDa

Observed MW:

115-120 kDa

Purification Method:

Protein A purification

CloneNo.:

240033E3

Recommended Dilutions:

WB 1:1000-1:4000

Applications

Tested Applications:

WB, FC (Intra), ELISA

Species Specificity:

human, mouse

Positive Controls:

WB : mouse testis tissue,

Storage

Storage:

Store at -20°C. Stable for one year after shipment.

Storage Buffer:

PBS with 0.02% sodium azide and 50% glycerol pH 7.3.

Aliquoting is unnecessary for -20°C storage

*** 20ul sizes contain 0.1% BSA

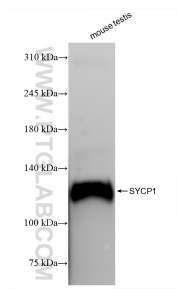
For technical support and original validation data for this product please contact:

T: 1 (888) 4PTGLAB (1-888-478-4522) (toll free in USA), or 1(312) 455-8498 (outside USA)

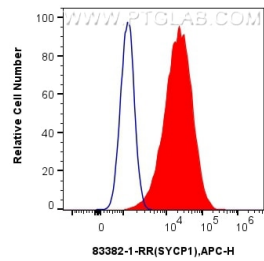
E: proteintech@ptglab.com
W: ptglab.com

This product is exclusively available under Proteintech Group brand and is not available to purchase from any other manufacturer.

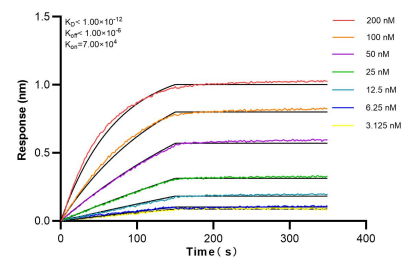
Selected Validation Data



mouse testis tissue were subjected to SDS PAGE followed by western blot with 83382-1-RR (SYCP1 antibody) at dilution of 1:2000 incubated at room temperature for 1.5 hours.



1x10⁶ MCF-7 cells were intracellularly stained with 0.25 ug Sycp1 Recombinant Antibody (83382-1-RR, Clone:240033E3) and APC-Conjugated Goat Anti-Rabbit IgG(H+L)(red), or 0.25 ug Isotype Control (blue). Cells were fixed and permeabilized with Transcription Factor Staining Buffer Kit (PF00011).



Biolayer interferometry (BLI) kinetic assays of 83382-1-RR against Human SYCP1 were performed. The affinity constant is below 1 pM.