

For Research Use Only

SYCP1 Recombinant antibody

Catalog Number: 83382-2-RR



Basic Information

Catalog Number:

83382-2-RR

Size:

100ul , Concentration: 1000 ug/ml by Nanodrop;

Source:

Rabbit

Isotype:

IgG

Immunogen Catalog Number:

AG16005

GenBank Accession Number:

BC126266

GeneID (NCBI):

6847

UNIPROT ID:

Q15431

Full Name:

synaptonemal complex protein 1

Calculated MW:

976 aa, 114 kDa

Observed MW:

115-120 kDa

Purification Method:

Protein A purification

CloneNo.:

240033H7

Recommended Dilutions:

WB 1:1000-1:4000

Applications

Tested Applications:

WB, ELISA

Species Specificity:

Human

Positive Controls:

WB : human testis tissue,

Storage

Storage:

Store at -20°C. Stable for one year after shipment.

Storage Buffer:

PBS with 0.02% sodium azide and 50% glycerol pH 7.3.

Aliquoting is unnecessary for -20°C storage

*** 20ul sizes contain 0.1% BSA

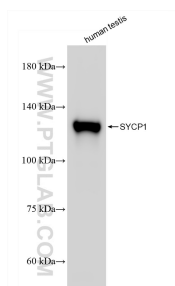
For technical support and original validation data for this product please contact:

T: 1 (888) 4PTGLAB (1-888-478-4522) (toll free in USA), or 1(312) 455-8498 (outside USA)

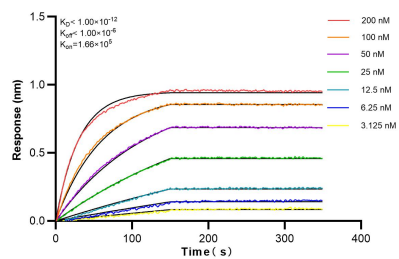
E: proteintech@ptglab.com
W: ptglab.com

This product is exclusively available under Proteintech Group brand and is not available to purchase from any other manufacturer.

Selected Validation Data



human testis tissue were subjected to SDS PAGE followed by western blot with 83382-2-RR (SYCP1 antibody) at dilution of 1:2000 incubated at room temperature for 1.5 hours.



Biolayer interferometry (BLI) kinetic assays of 83382-2-RR against Human SYCP1 were performed. The affinity constant is below 1 pM.