

For Research Use Only

NLRC5 Recombinant antibody, PBS Only (Capture)

Catalog Number: 83384-2-PBS



Basic Information

Catalog Number: 83384-2-PBS	GenBank Accession Number: BC063566	Purification Method: Protein A purification
Size: 100ug , Concentration: 1 mg/ml by Nanodrop;	GeneID (NCBI): 84166	CloneNo.: 240338D8
Source: Rabbit	UNIPROT ID: Q86WI3	
Isotype: IgG	Full Name: NLR family, CARD domain containing 5	
Immunogen Catalog Number: AG34508	Calculated MW: 204 kDa	

Applications

Tested Applications:
IF/ICC, FC (Intra), Cytometric bead array, Indirect ELISA

Species Specificity:
human

Product Information

83384-2-PBS targets NLRC5 as part of a matched antibody pair:

MP00402-3: 83384-2-PBS capture and 83384-3-PBS detection (validated in Cytometric bead array)

Unconjugated rabbit recombinant monoclonal antibody in PBS only (BSA and azide free) storage buffer at a concentration of 1 mg/mL, ready for conjugation. Created using Proteintech's proprietary in-house recombinant technology. Recombinant production enables unrivalled batch-to-batch consistency, easy scale-up, and future security of supply.

This conjugation ready format makes antibodies ideal for use in many applications including: ELISAs, multiplex assays requiring matched pairs, mass cytometry, and multiplex imaging applications. Antibody use should be optimized by the end user for each application and assay.

Background Information

The nucleotide-binding domain leucine-rich repeat containing (NLR) family of proteins is mainly involved in microbial pathogen recognition, inflammatory responses, and cell death. NLRC5, the largest member of the NLR family, is currently receiving an increasing level of attention. NLRC5 plays a role in cytokine response and antiviral immunity through its inhibition of NF-kappa-B activation and negative regulation of type I interferon signaling pathways.

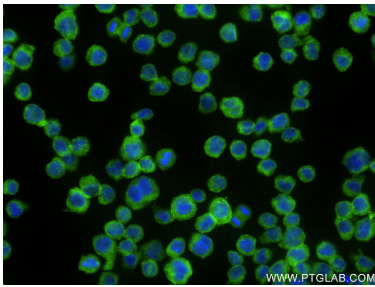
Storage

Storage:
Store at -80°C.
Storage Buffer:
PBS Only

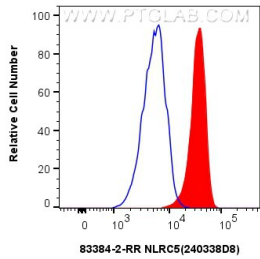
For technical support and original validation data for this product please contact:
T: 1 (888) 4PTGLAB (1-888-478-4522) (toll free in USA), or 1(312) 455-8498 (outside USA)
E: proteintech@ptglab.com
W: ptglab.com

This product is exclusively available under Proteintech Group brand and is not available to purchase from any other manufacturer.

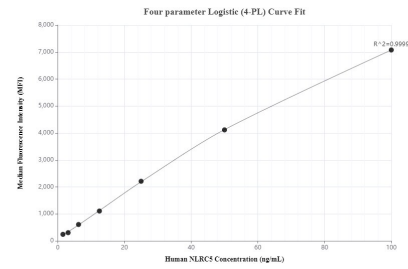
Selected Validation Data



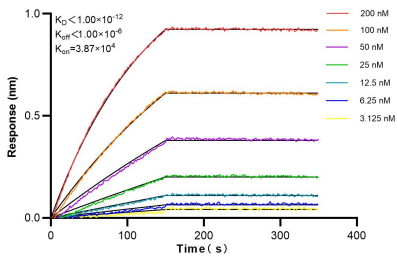
Immunofluorescent analysis of (4% PFA) fixed THP-1 cells using NLRC5 antibody (83384-2-RR, Clone: 240338D8) at dilution of 1:250 and CoraLite®488-Conjugated AffiniPure Goat Anti-Rabbit IgG(H+L) (SA00013-2). This data was developed using the same antibody clone with 83384-2-PBS in a different storage buffer formulation.



1x10⁶ THP-1 cells were intracellularly stained with 0.25 ug NLRC5 Recombinant antibody (83384-2-RR, Clone:240338D8) and CoraLite®488-Conjugated Goat Anti-Rabbit IgG(H+L) (SA00013-2)(red), or 0.25 ug Rabbit IgG Isotype Control RecAb (98136-1-RR, Clone: 240953C9) (blue). Cells were fixed with 4% PFA and permeabilized with Flow Cytometry Perm Buffer (PF00011-C). This data was developed using the same antibody clone with 83384-2-PBS in a



Cytometric bead array standard curve of MP00402-3, NLRC5 Recombinant Matched Antibody Pair, PBS Only. Capture antibody: 83384-2-PBS. Detection antibody: 83384-3-PBS. Standard: Ag34508. Range: 1.56-100 ng/mL



Bioluminescence resonance energy transfer (BLI) kinetic assays of 83384-2-RR against Human NLRC5 were performed. The affinity constant is below 1 pM.