

For Research Use Only

DSC3 Recombinant antibody, PBS Only (Capture/Detector)

Catalog Number: 83386-2-PBS



Basic Information

Catalog Number: 83386-2-PBS	GenBank Accession Number: NM_001941	Purification Method: Protein A purification
Size: 100ug , Concentration: 1 mg/ml by Nanodrop;	GeneID (NCBI): 1825	CloneNo.: 240292E1
Source: Rabbit	UNIPROT ID: Q14574	
Isotype: IgG	Full Name: desmocollin 3	
Immunogen Catalog Number: AG34648	Calculated MW: 100 kDa	

Applications

Tested Applications:
Cytometric bead array, Sandwich ELISA, Indirect ELISA, Sample test

Species Specificity:
human

Product Information

83386-2-PBS targets DSC3 as part of a matched antibody pair:

MP00421-1: 83386-2-PBS capture and 83386-4-PBS detection (validated in Cytometric bead array)

MP00421-2: 83386-2-PBS capture and 83386-1-PBS detection (validated in Cytometric bead array)

MP00421-4: 83386-6-PBS capture and 83386-2-PBS detection (validated in Sandwich ELISA)

Unconjugated rabbit recombinant monoclonal antibody in PBS only (BSA and azide free) storage buffer at a concentration of 1 mg/mL, ready for conjugation. Created using Proteintech's proprietary in-house recombinant technology. Recombinant production enables unrivalled batch-to-batch consistency, easy scale-up, and future security of supply.

This conjugation ready format makes antibodies ideal for use in many applications including: ELISAs, multiplex assays requiring matched pairs, mass cytometry, and multiplex imaging applications. Antibody use should be optimized by the end user for each application and assay.

Storage

Storage:
Store at -80°C.

Storage Buffer:
PBS Only

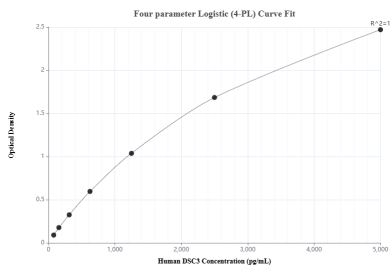
For technical support and original validation data for this product please contact:

T: 1 (888) 4PTGLAB (1-888-478-4522) (toll free in USA), or 1(312) 455-8498 (outside USA)

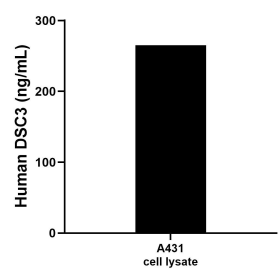
E: proteintech@ptglab.com
W: ptglab.com

This product is exclusively available under Proteintech Group brand and is not available to purchase from any other manufacturer.

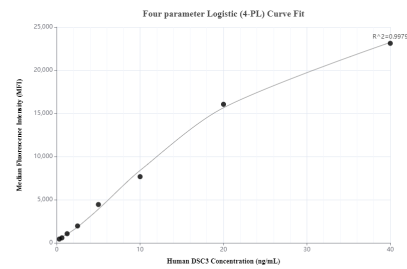
Selected Validation Data



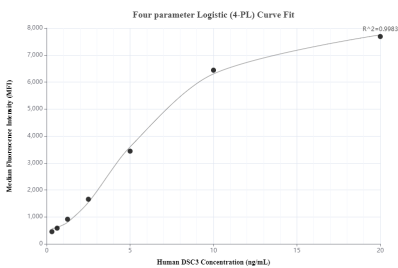
Sandwich ELISA standard curve of MP00421-4, Human DSC3 Recombinant Matched Antibody Pair - PBS only. 83386-6-PBS was coated to a plate as the capture antibody and incubated with serial dilutions of standard Ag34648. 83386-2-PBS was HRP conjugated as the detection antibody. Range: 78.1-5000 pg/mL



A431 cell lysate was measured. The human DSC3 concentration of detected samples was determined to be 265.17 ng/mL.



Cytometric bead array standard curve of MP00421-1, DSC3 Recombinant Matched Antibody Pair, PBS Only. Capture antibody: 83386-2-PBS. Detection antibody: 83386-4-PBS. Standard: Ag34648. Range: 0.312-40 ng/mL



Cytometric bead array standard curve of MP00421-2, DSC3 Recombinant Matched Antibody Pair, PBS Only. Capture antibody: 83386-2-PBS. Detection antibody: 83386-1-PBS. Standard: Ag34648. Range: 0.312-20 ng/mL