

For Research Use Only

Mouse CD45 Recombinant antibody, PBS Only (Detector)

Catalog Number: 83396-1-PBS



Basic Information

Catalog Number: 83396-1-PBS	GenBank Accession Number: NM_001111316.2	Purification Method: Protein A purification
Size: 100ug , Concentration: 1 mg/ml by Nanodrop;	GeneID (NCBI): 19264	CloneNo.: 240356C11
Source: Rabbit	UNIPROT ID: P06800-4	
Isotype: IgG	Full Name: protein tyrosine phosphatase, receptor type, C	
Immunogen Catalog Number: EG0845	Calculated MW: 145 kDa	

Applications

Tested Applications:
Cytometric bead array, Indirect ELISA

Species Specificity:
mouse

Product Information

83396-1-PBS targets CD45 as part of a matched antibody pair:

MP00412-1: 83396-3-PBS capture and 83396-1-PBS detection (validated in Cytometric bead array)

MP00412-2: 83396-4-PBS capture and 83396-1-PBS detection (validated in Cytometric bead array)

Unconjugated rabbit recombinant monoclonal antibody in PBS only (BSA and azide free) storage buffer at a concentration of 1 mg/mL, ready for conjugation. Created using Proteintech's proprietary in-house recombinant technology. Recombinant production enables unrivalled batch-to-batch consistency, easy scale-up, and future security of supply.

This conjugation ready format makes antibodies ideal for use in many applications including: ELISAs, multiplex assays requiring matched pairs, mass cytometry, and multiplex imaging applications. Antibody use should be optimized by the end user for each application and assay.

Storage

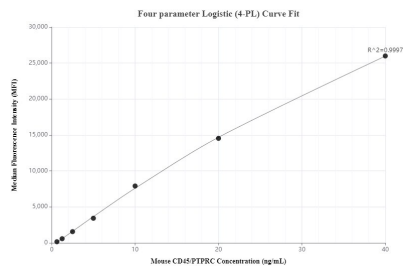
Storage:
Store at -80°C.

Storage Buffer:
PBS only, pH7.3

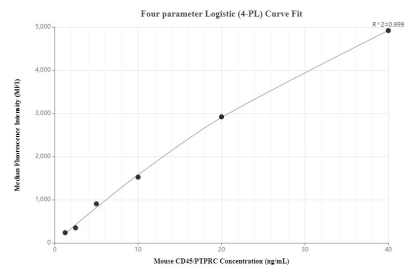
For technical support and original validation data for this product please contact:
T: 1 (888) 4PTGLAB (1-888-478-4522) (toll free in USA), or 1(312) 455-8498 (outside USA)
E: proteintech@ptglab.com
W: ptglab.com

This product is exclusively available under Proteintech Group brand and is not available to purchase from any other manufacturer.

Selected Validation Data



Cytometric bead array standard curve of MP00412-1, Mouse CD45 Recombinant Matched Antibody Pair, PBS Only. Capture antibody: 83396-3-PBS. Detection antibody: 83396-1-PBS. Standard: Eg0845. Range: 0.625-40 ng/mL



Cytometric bead array standard curve of MP00412-2, Mouse CD45 Recombinant Matched Antibody Pair, PBS Only. Capture antibody: 83396-4-PBS. Detection antibody: 83396-1-PBS. Standard: Eg0845. Range: 1.25-40 ng/mL