

For Research Use Only

CD45 Recombinant antibody

Catalog Number: 83396-13-RR



Basic Information

Catalog Number:

83396-13-RR

Size:

100ul, Concentration: 1000 µg/ml by Nanodrop;

Source:

Rabbit

Isotype:

IgG

GenBank Accession Number:

NM_001111316.2

GeneID (NCBI):

19264

UNIPROT ID:

P06800-4

Full Name:

protein tyrosine phosphatase, receptor type, C

Calculated MW:

145 kDa

Observed MW:

220 kDa

Purification Method:

Protein A purification

CloneNo.:

240920G1

Recommended Dilutions:

WB 1:1000-1:4000

IF/ICC 1:125-1:500

Applications

Tested Applications:

WB, IF/ICC, ELISA

Species Specificity:

mouse

Positive Controls:

WB : RAW 264.7 cells, J774A.1 cells

IF/ICC : RAW 264.7 cells,

Background Information

CD45, also known as leukocyte common antigen (LCA), B220, and T200, is a 180-240 kD single-chain type I membrane glycoprotein. It is a tyrosine phosphatase expressed on the plasma membrane of all hematopoietic cells, except erythrocytes and platelets. CD45 is a signaling molecule that regulates various cellular processes including cell growth, differentiation, cell cycle, and oncogenic transformation. CD45 is one of the best negative selection markers for characterizing and/or isolating human mesenchymal stem cells from bone marrow and other sources. Along with the positive selection markers (such as CD29, CD44, CD90, CD105, and CD166), negative selection markers (such as CD34 and CD45) are used for MSC identification.

Storage

Storage:

Store at -20°C. Stable for one year after shipment.

Storage Buffer:

PBS with 0.02% sodium azide and 50% glycerol pH 7.3.

Aliquoting is unnecessary for -20°C storage

*** 20ul sizes contain 0.1% BSA

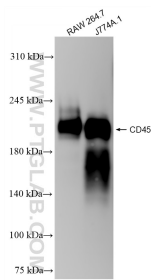
For technical support and original validation data for this product please contact:

T: 1 (888) 4PTGLAB (1-888-478-4522) (toll free in USA), or 1(312) 455-8498 (outside USA)

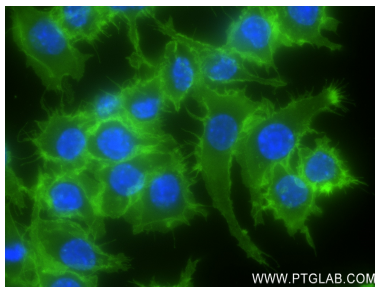
E: proteintech@ptglab.com
W: ptglab.com

This product is exclusively available under Proteintech Group brand and is not available to purchase from any other manufacturer.

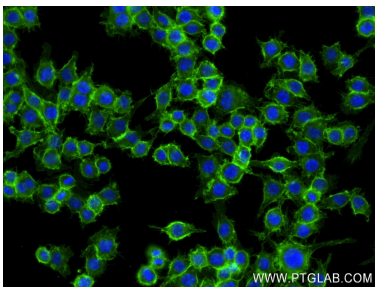
Selected Validation Data



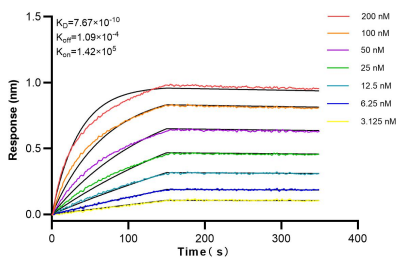
Various lysates were subjected to SDS PAGE followed by western blot with 83396-13-RR (CD45/PTPRC antibody) at dilution of 1:2000 incubated at room temperature for 1.5 hours.



Immunofluorescent analysis of (4% PFA) fixed RAW 264.7 cells using CD45/PTPRC antibody (83396-13-RR, Clone: 240920G1) at dilution of 1:250 and CoraLite®488-Conjugated AffiniPure Goat Anti-Rabbit IgG(H+L) (SA00013-2).



Immunofluorescent analysis of (4% PFA) fixed RAW 264.7 cells using CD45/PTPRC antibody (83396-13-RR, Clone: 240920G1) at dilution of 1:250 and CoraLite®488-Conjugated AffiniPure Goat Anti-Rabbit IgG(H+L) (SA00013-2).



Biolayer interferometry (BLI) kinetic assays of 83396-13-RR against Mouse CD45/PTPRC were performed. The affinity constant is 0.767 nM.