

For Research Use Only

MPHOSPH9 Recombinant antibody

Catalog Number: 83397-5-RR



Basic Information

Catalog Number:

83397-5-RR

Size:

100ul , Concentration: 1000 ug/ml by
Nanodrop;

Source:

Rabbit

Isotype:

IgG

Immunogen Catalog Number:

AG22228

GenBank Accession Number:

BC130440

GeneID (NCBI):

10198

UNIPROT ID:

Q99550

Full Name:

M-phase phosphoprotein 9

Calculated MW:

1031 aa, 116 kDa

Observed MW:

116 kDa

Purification Method:

Protein A purification

CloneNo.:

240182D6

Recommended Dilutions:

WB 1:1000-1:6000

Applications

Tested Applications:

WB, FC (Intra), ELISA

Species Specificity:

human, mouse, rat

Positive Controls:

WB : HeLa cells, rat brain tissue, NIH/3T3 cells, PC-12
cells, SH-SY5Y cells, mouse brain tissue

Background Information

MPHOSPH9, also known as MPP9, is a protein phosphorylated during mitosis. MPHOSPH9 negatively regulates cilia formation by recruiting the CP110-CEP97 complex at the distal end of the mother centriole in ciliary cells. MPHOSPH9 is a centrosome component that localizes to the distal and proximal ends of two centrioles (PMID: 30375385).

Storage

Storage:

Store at -20°C. Stable for one year after shipment.

Storage Buffer:

PBS with 0.02% sodium azide and 50% glycerol pH 7.3.

Aliquoting is unnecessary for -20°C storage

*** 20ul sizes contain 0.1% BSA

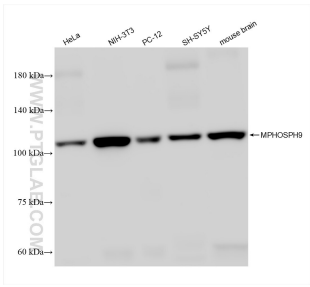
For technical support and original validation data for this product please contact:

T: 1 (888) 4PTGLAB (1-888-478-4522) (toll free
in USA), or 1(312) 455-8498 (outside USA)

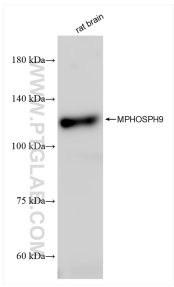
E: proteintech@ptglab.com
W: ptglab.com

This product is exclusively available under Proteintech Group brand and is not available to purchase from any other manufacturer.

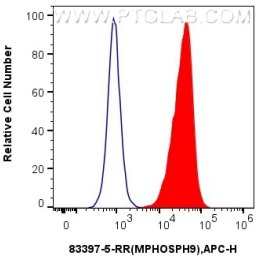
Selected Validation Data



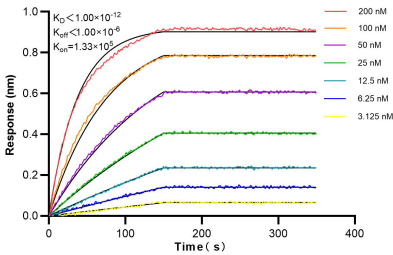
Various lysates were subjected to SDS PAGE followed by western blot with 83397-5-RR (MPHOSPH9 antibody) at dilution of 1:3000 incubated at room temperature for 1.5 hours.



Various lysates were subjected to SDS PAGE followed by western blot with 83397-5-RR (MPHOSPH9 antibody) at dilution of 1:3000 incubated at room temperature for 1.5 hours.



1x10⁶ A431 cells were intracellularly stained with 0.25 ug MPHOSPH9 Recombinant antibody (83397-5-RR, Clone:240182D6) and APC-Conjugated Goat Anti-Rabbit IgG(H+L)(red), or 0.25 ug Isotype Control (blue). Cells were fixed with 4% PFA and permeabilized with Flow Cytometry Perm Buffer (PF00011-C).



Biolayer interferometry (BLI) kinetic assays of 83397-5-RR against Human MPHOSPH9 were performed. The affinity constant is below 1 pM.