

For Research Use Only

MOSPD2 Recombinant antibody, PBS Only (Capture/Detector)

Catalog Number: 83398-1-PBS

Featured Product



Basic Information

Catalog Number:

83398-1-PBS

Size:

100ug, Concentration: 1 mg/ml by Nanodrop;

Source:

Rabbit

Isotype:

IgG

Immunogen Catalog Number:

AG22206

GenBank Accession Number:

BC030641

GeneID (NCBI):

158747

UNIPROT ID:

Q8NHP6

Full Name:

motile sperm domain containing 2

Calculated MW:

518 aa, 60 kDa

Observed MW:

59 kDa

Purification Method:

Protein A purification

CloneNo.:

240282C11

Applications

Tested Applications:

WB, IHC, FC (Intra), Cytometric bead array, Indirect ELISA

Species Specificity:

human, rat

Product Information

83398-1-PBS targets MOSPD2 as part of a matched antibody pair:

MP00419-2: 83398-1-PBS capture and 83398-2-PBS detection (validated in Cytometric bead array)

MP00419-3: 83398-3-PBS capture and 83398-1-PBS detection (validated in Cytometric bead array)

Unconjugated rabbit recombinant monoclonal antibody in PBS only (BSA and azide free) storage buffer at a concentration of 1 mg/mL, ready for conjugation. Created using Proteintech's proprietary in-house recombinant technology. Recombinant production enables unrivalled batch-to-batch consistency, easy scale-up, and future security of supply.

This conjugation ready format makes antibodies ideal for use in many applications including: ELISAs, multiplex assays requiring matched pairs, mass cytometry, and multiplex imaging applications. Antibody use should be optimized by the end user for each application and assay.

Background Information

MOSPD2 is a 518-amino acid protein containing an N-terminal CRAL/TRIO domain, a major sperm protein (MSP) domain, and a potential C-terminal transmembrane domain. MOSPD2 is a member of the vesicle-associated membrane protein-associated protein (VAP) family and one of the endoplasmic reticulum (ER) receptors that function as tether proteins to bridge ER and other organelles to build contacts (PMID: 29858488, 35389430).

Storage

Storage:

Store at -80°C.

Storage Buffer:

PBS only, pH7.3

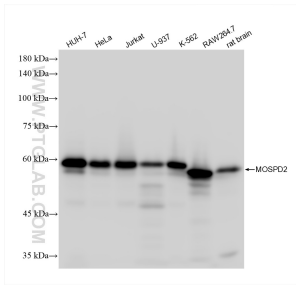
For technical support and original validation data for this product please contact:

T: 1 (888) 4PTGLAB (1-888-478-4522) (toll free in USA), or 1(312) 455-8498 (outside USA)

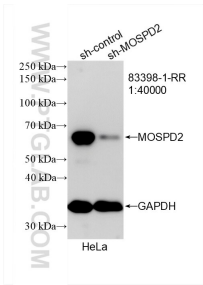
E: proteintech@ptglab.com
W: ptglab.com

This product is exclusively available under Proteintech Group brand and is not available to purchase from any other manufacturer.

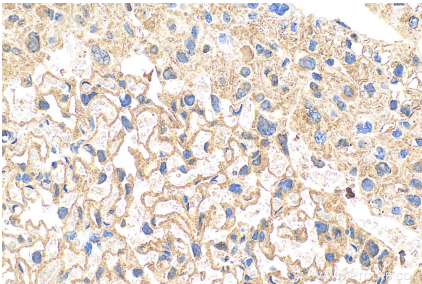
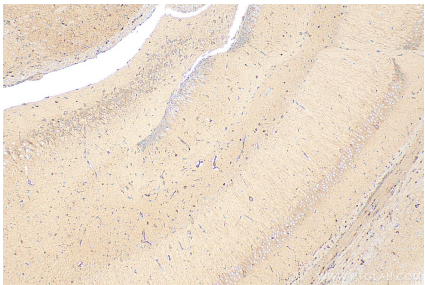
Selected Validation Data



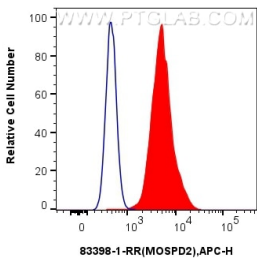
Various lysates were subjected to SDS PAGE followed by western blot with 83398-1-RR (MOSPD2 antibody) at dilution of 1:10000 incubated at room temperature for 1.5 hours. This data was developed using the same antibody clone with 83398-1-PBS in a different storage buffer formulation.



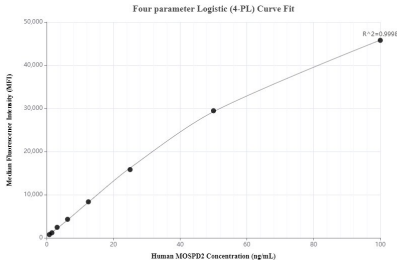
WB result of MOSPD2 antibody (83398-1-RR; 1:40000; incubated at room temperature for 1.5 hours) with sh-Control and sh-MOSPD2 transfected HeLa cells. This data was developed using the same antibody clone with 83398-1-PBS in a different storage buffer formulation.



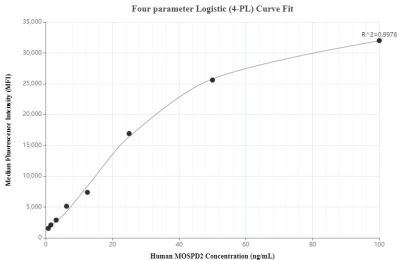
Immunohistochemical analysis of paraffin-embedded mouse placenta tissue slide using 83398-1-RR (MOSPD2 antibody) at dilution of 1:400 (under 40x lens). Heat mediated antigen retrieval with Tris-EDTA buffer (pH 9.0). This data was developed using the same antibody clone with 83398-1-PBS in a different storage buffer formulation.



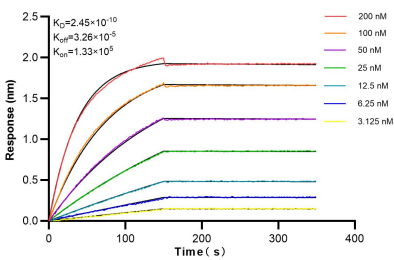
1x10⁶ A431 cells were intracellularly stained with 0.25 ug MOSPD2 Recombinant antibody (83398-1-RR, Clone:240282C11) and APC-Conjugated AffiniPure Goat Anti-Rabbit IgG(H+L) (red), or 0.25 ug Isotype Control (blue). Cells were fixed with 4% PFA and permeabilized with Flow Cytometry Perm Buffer (PF00011-C). This data was developed using the same antibody clone with 83398-1-PBS in a different storage buffer formulation.



Cytometric bead array standard curve of MP00419-2, MOSPD2 Recombinant Matched Antibody Pair, PBS Only. Capture antibody: 83398-1-PBS. Detection antibody: 83398-2-PBS. Standard: Ag22206. Range: 0.78-100 ng/mL.



Cytometric bead array standard curve of MP00419-3, MOSPD2 Recombinant Matched Antibody Pair, PBS Only. Capture antibody: 83398-3-PBS. Detection antibody: 83398-1-PBS. Standard: Ag22206. Range: 0.78-100 ng/mL.



Biolayer interferometry (BLI) kinetic assays of 83398-1-RR against Human MOSPD2 were performed. The affinity constant is 0.245 nM.