

For Research Use Only

MOSPD2 Recombinant antibody

Catalog Number: 83398-1-RR

Featured Product



Basic Information

Catalog Number:

83398-1-RR

Size:

100ul, Concentration: 1000 ug/ml by Nanodrop;

Source:

Rabbit

Isotype:

IgG

Immunogen Catalog Number:

AG22206

GenBank Accession Number:

BC030641

GeneID (NCBI):

158747

UNIPROT ID:

Q8NHP6

Full Name:

motile sperm domain containing 2

Calculated MW:

518 aa, 60 kDa

Observed MW:

59 kDa

Purification Method:

Protein A purification

CloneNo.:

240282C11

Recommended Dilutions:

WB: 1:5000-1:50000

IHC: 1:200-1:800

FC (Intra): 0.25 ug per 10⁶ cells in a 100 µl suspension

Applications

Tested Applications:

WB, IHC, FC (Intra), ELISA

Species Specificity:

human, rat

Note-IHC: suggested antigen retrieval with TE buffer pH 9.0; (*) Alternatively, antigen retrieval may be performed with citrate buffer pH 6.0

Positive Controls:

WB: HuH-7 cells, HeLa cells, Jurkat cells, U-937 cells, K-562 cells, RAW 264.7 cells, rat brain tissue

IHC: mouse placenta tissue, mouse brain tissue

FC (Intra): A431 cells,

Background Information

MOSPD2 is a 518-amino acid protein containing an N-terminal CRAL/TRIO domain, a major sperm protein (MSP) domain, and a potential C-terminal transmembrane domain. MOSPD2 is a member of the vesicle-associated membrane protein-associated protein (VAP) family and one of the endoplasmic reticulum (ER) receptors that function as tether proteins to bridge ER and other organelles to build contacts (PMID: 29858488, 35389430).

Storage

Storage:

Store at -20°C. Stable for one year after shipment.

Storage Buffer:

PBS with 0.02% sodium azide and 50% glycerol, pH7.3

Aliquoting is unnecessary for -20°C storage

*** 20ul sizes contain 0.1% BSA

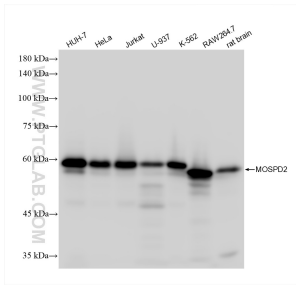
For technical support and original validation data for this product please contact:

T: 1 (888) 4PTGLAB (1-888-478-4522) (toll free in USA), or 1(312) 455-8498 (outside USA)

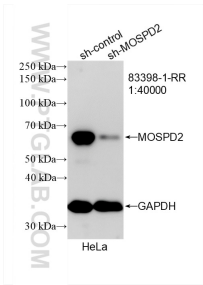
E: proteintech@ptglab.com
W: ptglab.com

This product is exclusively available under Proteintech Group brand and is not available to purchase from any other manufacturer.

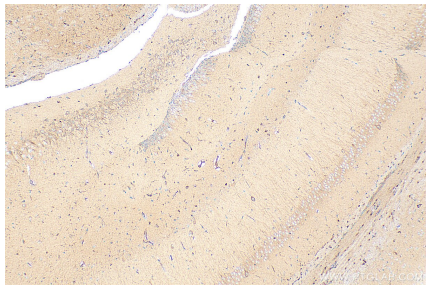
Selected Validation Data



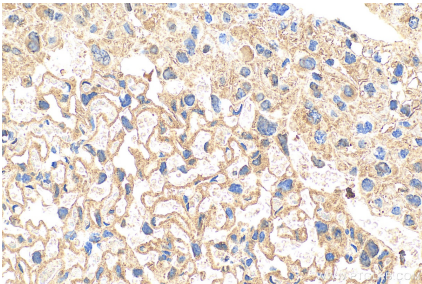
Various lysates were subjected to SDS PAGE followed by western blot with 83398-1-RR (MOSPD2 antibody) at dilution of 1:10000 incubated at room temperature for 1.5 hours.



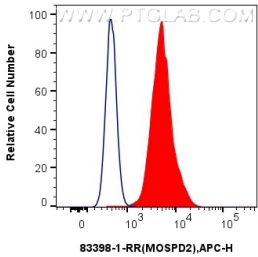
WB result of MOSPD2 antibody (83398-1-RR; 1:40000; incubated at room temperature for 1.5 hours) with sh-Control and sh-MOSPD2 transfected HeLa cells.



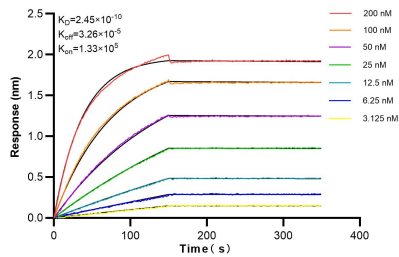
Immunohistochemical analysis of paraffin-embedded mouse brain tissue slide using 83398-1-RR (MOSPD2 antibody) at dilution of 1:400 (under 10x lens). Heat mediated antigen retrieval with Tris-EDTA buffer (pH 9.0).



Immunohistochemical analysis of paraffin-embedded mouse placenta tissue slide using 83398-1-RR (MOSPD2 antibody) at dilution of 1:400 (under 40x lens). Heat mediated antigen retrieval with Tris-EDTA buffer (pH 9.0).



1x10⁶ A431 cells were intracellularly stained with 0.25 ug MOSPD2 Recombinant antibody (83398-1-RR, Clone:240282C11) and APC-Conjugated AffiniPure Goat Anti-Rabbit IgG(H+L) (red), or 0.25 ug Isotype Control (blue). Cells were fixed with 4% PFA and permeabilized with Flow Cytometry Perm Buffer (PF00011-C).



Biolayer interferometry (BLI) kinetic assays of 83398-1-RR against Human MOSPD2 were performed. The affinity constant is 0.245 nM.