

For Research Use Only

# SREBF2 Recombinant antibody, PBS Only (Detector)

Catalog Number: 83403-1-PBS



## Basic Information

|   |   |   |
|---|---|---|
| <b>Catalog Number:</b><br>83403-1-PBS                       | <b>GenBank Accession Number:</b><br>BC056158                                  | <b>Purification Method:</b><br>Protein A purification |
| <b>Size:</b><br>100ug , Concentration: 1 mg/ml by Nanodrop; | <b>GeneID (NCBI):</b><br>6721   | <b>CloneNo.:</b><br>240451A12                         |
| <b>Source:</b><br>Rabbit                                    | <b>UNIPROT ID:</b><br>Q12772  |   |
| <b>Isotype:</b><br>IgG                                      | <b>Full Name:</b><br>sterol regulatory element binding transcription factor 2 |   |
| <b>Immunogen Catalog Number:</b><br>AG28205                 | <b>Calculated MW:</b><br>124 kDa  |   |

## Applications

**Tested Applications:**  
IF/ICC, FC (Intra), Cytometric bead array, Indirect ELISA

**Species Specificity:**  
human

## Product Information

83403-1-PBS targets SREBF2 as part of a matched antibody pair:

MP00408-2: 83403-2-PBS capture and 83403-1-PBS detection (validated in Cytometric bead array)

MP00408-3: 83403-4-PBS capture and 83403-1-PBS detection (validated in Cytometric bead array)

Unconjugated rabbit recombinant monoclonal antibody in PBS only (BSA and azide free) storage buffer at a concentration of 1 mg/mL, ready for conjugation. Created using Proteintech's proprietary in-house recombinant technology. Recombinant production enables unrivalled batch-to-batch consistency, easy scale-up, and future security of supply.

This conjugation ready format makes antibodies ideal for use in many applications including: ELISAs, multiplex assays requiring matched pairs, mass cytometry, and multiplex imaging applications. Antibody use should be optimized by the end user for each application and assay.

## Background Information

SREBF2, also named as BHLHD2, is a 1141 amino acid protein, which contains 1 bHLH domain and belongs to the SREBP family. SREBF2 localizes in the endoplasmic reticulum membrane and is ubiquitously expressed in adult and fetal tissues. SREBF2 as a transcriptional activator is required for lipid homeostasis.

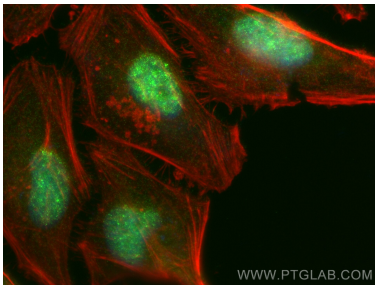
## Storage

**Storage:**  
Store at -80°C.  
**Storage Buffer:**  
PBS Only

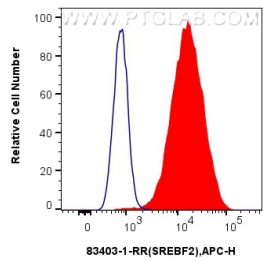
For technical support and original validation data for this product please contact:  
T: 1 (888) 4PTGLAB (1-888-478-4522) (toll free in USA), or 1(312) 455-8498 (outside USA)  
E: [proteintech@ptglab.com](mailto:proteintech@ptglab.com)  
W: [ptglab.com](http://ptglab.com)

This product is exclusively available under Proteintech Group brand and is not available to purchase from any other manufacturer.

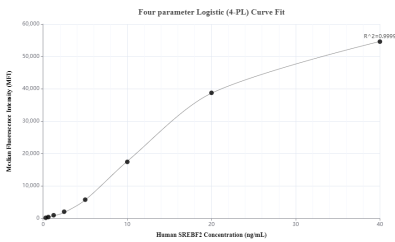
Selected Validation Data



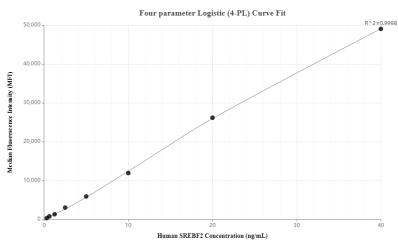
Immunofluorescent analysis of (4% PFA) fixed HeLa cells using SREBF2 antibody (83403-1-RR, Clone: 240451A12 ) at dilution of 1:400 and CoraLite®488-Conjugated Goat Anti-Rabbit IgG(H+L) (SA00013-2), CL594-Phalloidin (red). This data was developed using the same antibody clone with 83403-1-PBS in a different storage buffer formulation.



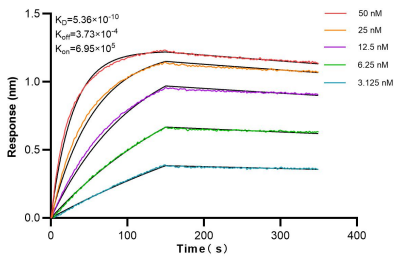
1x10<sup>6</sup> HeLa cells were intracellularly stained with 0.25 ug SREBF2 Recombinant antibody (83403-1-RR, Clone:240451A12) and APC-Conjugated AffiniPure Goat Anti-Rabbit IgG(H+L)(red), or 0.25 ug Isotype Control (blue). Cells were fixed with 4% PFA and permeabilized with Flow Cytometry Perm Buffer (PF00011-C). This data was developed using the same antibody clone with 83403-1-PBS in a different storage buffer formulation.



Cytometric bead array standard curve of MP00408-2, SREBF2 Recombinant Matched Antibody Pair, PBS Only. Capture antibody: 83403-2-PBS. Detection antibody: 83403-1-PBS. Standard: Ag28205. Range: 0.313-40 ng/mL.



Cytometric bead array standard curve of MP00408-3, SREBF2 Recombinant Matched Antibody Pair, PBS Only. Capture antibody: 83403-4-PBS. Detection antibody: 83403-1-PBS. Standard: Ag28205. Range: 0.313-40 ng/mL.



Biolayer interferometry (BLI) kinetic assays of 83403-1-RR against Human SREBF2 were performed. The affinity constant is 0.536 nM.