

For Research Use Only

# Lactotransferrin/LTF Recombinant antibody, PBS Only (Detector)

Catalog Number: 83409-1-PBS



## Basic Information

### Catalog Number:

83409-1-PBS

### Size:

100ug, Concentration: 1 mg/ml by Nanodrop;

### Source:

Rabbit

### Isotype:

IgG

### GenBank Accession Number:

NM\_002343.6

### GeneID (NCBI):

4057

### UNIPROT ID:

P02788-1

### Full Name:

Lactotransferrin

### Calculated MW:

78 kDa

### Purification Method:

Protein A purification

### CloneNo.:

240280A9

## Applications

### Tested Applications:

Cytometric bead array, Sandwich ELISA, Indirect ELISA, Sample test

### Species Specificity:

human

## Product Information

83409-1-PBS targets Lactotransferrin/LTF as part of a matched antibody pair.

MP00429-1: 83409-4-PBS capture and 83409-1-PBS detection (validated in Cytometric bead array, Sandwich ELISA)

MP00429-2: 83409-2-PBS capture and 83409-1-PBS detection (validated in Cytometric bead array)

Unconjugated rabbit recombinant monoclonal antibody in PBS only (BSA and azide free) storage buffer at a concentration of 1 mg/mL, ready for conjugation. Created using Proteintech's proprietary in-house recombinant technology. Recombinant production enables unrivalled batch-to-batch consistency, easy scale-up, and future security of supply.

This conjugation ready format makes antibodies ideal for use in many applications including: ELISAs, multiplex assays requiring matched pairs, mass cytometry, and multiplex imaging applications. Antibody use should be optimized by the end user for each application and assay.

## Storage

### Storage:

Store at -80°C.

### Storage Buffer:

PBS Only

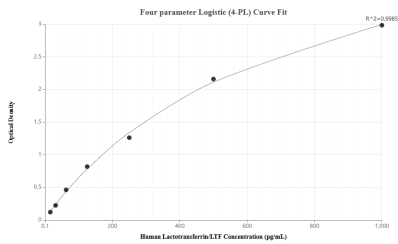
For technical support and original validation data for this product please contact:

T: 1 (888) 4PTGLAB (1-888-478-4522) (toll free in USA), or 1(312) 455-8498 (outside USA)

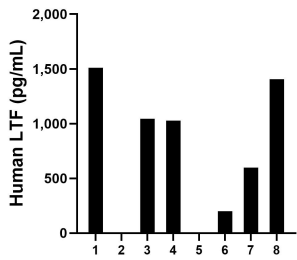
E: [proteintech@ptglab.com](mailto:proteintech@ptglab.com)  
W: [ptglab.com](http://ptglab.com)

This product is exclusively available under Proteintech Group brand and is not available to purchase from any other manufacturer.

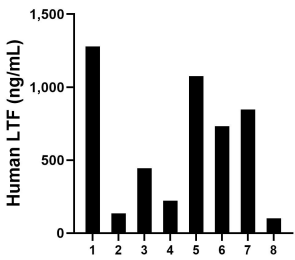
Selected Validation Data



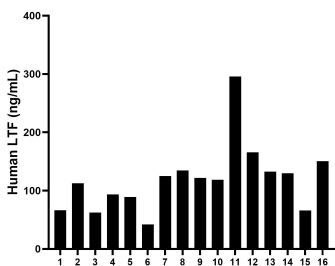
Sandwich ELISA standard curve of MP00429-1, Human Lactotransferrin/LTF Recombinant Matched Antibody Pair - PBS only. 83409-4-PBS was coated to a plate as the capture antibody and incubated with serial dilutions of standard Eg0888. 83409-1-PBS was HRP conjugated as the detection antibody. Range: 15.6-1000 pg/mL



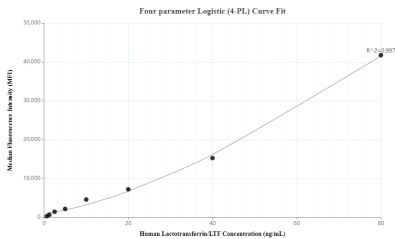
Urine of eight humans was measured. The Lactotransferrin/LTF concentration of these samples was determined to be 964.611 pg/mL, with a range of 201.321 - 1,510.588. pg/mL



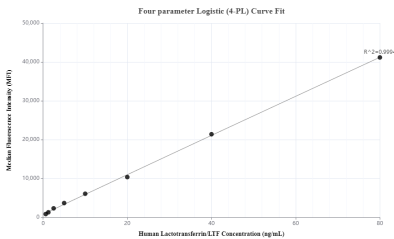
Saliva of eight humans was measured. The Lactotransferrin/LTF concentration of these samples was determined to be 604.833 ng/mL, with a range of 101.828 - 1,277.928 pg/mL



Serum of sixteen humans was measured. The Lactotransferrin/LTF concentration of these samples was determined to be 119.112 ng/mL, with a range of 42.104 - 295.911 pg/mL



Cytometric bead array standard curve of MP00429-1, Lactotransferrin/LTF Recombinant Matched Antibody Pair, PBS Only. Capture antibody: 83409-4-PBS. Detection antibody: 83409-1-PBS. Standard: Eg0888. Range: 0.625-80 ng/mL



Cytometric bead array standard curve of MP00429-2, Lactotransferrin/LTF Recombinant Matched Antibody Pair, PBS Only. Capture antibody: 83409-2-PBS. Detection antibody: 83409-1-PBS. Standard: Eg0888. Range: 0.625-80 ng/mL