

For Research Use Only

Lactotransferrin/LTF Recombinant antibody

Catalog Number: 83409-5-RR



Basic Information

Catalog Number: 83409-5-RR	GenBank Accession Number: NM_002343.6	Purification Method: Protein A purification
Size: 100ul , Concentration: 1000 ug/ml by Nanodrop;	GeneID (NCBI): 4057	CloneNo.: 240280E2
Source: Rabbit	UNIPROT ID: P02788-1	Recommended Dilutions: WB 1:500-1:2000
Isotype: IgG	Full Name: lactotransferrin	
	Calculated MW: 78 kDa	
	Observed MW: 30 kDa, 51 kDa, 80 kDa	

Applications

Tested Applications: WB, ELISA	Positive Controls: WB : human saliva,
Species Specificity: human	

Background Information

LTF(Lactotransferrin) is also named as GIG12, LF and belongs to the transferrin family. It is an iron binding transport protein which can bind two atoms of ferric iron in association with the binding of an anion, usually bicarbonate. LTF is also an important protein component of the innate immune system that is broadly distributed within the body fluids. It can contribute to the activation of both the innate and adaptive immune responses by promoting the recruitment of leukocytes and activation of dendritic cells(PMID:18453607). This protein has 2 isoforms produced by alternative promoter usage. The human LTF can be isolated two fragments, an N-terminal tryptic fragment having an MW of 30 kDa and a C-terminal tryptic fragment having an MW of 50 kDa by a mild tryptic digest(PMID:3790094).

Storage

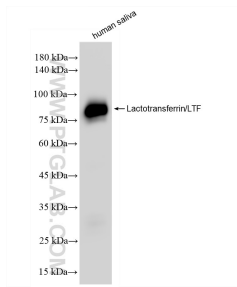
Storage:
Store at -20°C. Stable for one year after shipment.
Storage Buffer:
PBS with 0.02% sodium azide and 50% glycerol pH 7.3.
Aliquoting is unnecessary for -20°C storage

*** 20ul sizes contain 0.1% BSA

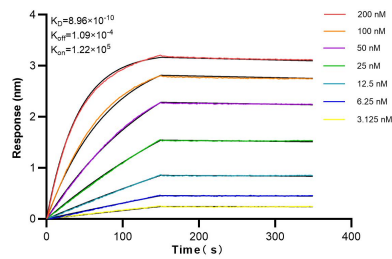
For technical support and original validation data for this product please contact:
T: 1 (888) 4PTGLAB (1-888-478-4522) (toll free in USA), or 1(312) 455-8498 (outside USA)
E: proteintech@ptglab.com
W: ptglab.com

This product is exclusively available under Proteintech Group brand and is not available to purchase from any other manufacturer.

Selected Validation Data



human saliva were subjected to SDS PAGE followed by western blot with 83409-5-RR (Lactotransferrin/LTF antibody) at dilution of 1:1000 incubated at room temperature for 1.5 hours.



Biolayer interferometry (BLI) kinetic assays of 83409-5-RR against Human Lactotransferrin/LTF were performed. The affinity constant is 0.896 nM.