

For Research Use Only

SLC6A7 Recombinant antibody, PBS Only (Detector)

Catalog Number: 83412-2-PBS



Basic Information

Catalog Number: 83412-2-PBS	GenBank Accession Number: BC093785	Purification Method: Protein A purification
Size: 100ug , Concentration: 1 mg/ml by Nanodrop;	GeneID (NCBI): 6534	CloneNo.: 240395E7
Source: Rabbit	UNIPROT ID: Q99884	
Isotype: IgG	Full Name: solute carrier family 6 (neurotransmitter transporter, L-proline), member 7	
Immunogen Catalog Number: AG34413	Calculated MW: 636 aa, 71 kDa	

Applications

Tested Applications:
Cytometric bead array, Indirect ELISA

Species Specificity:
human

Product Information

83412-2-PBS targets SLC6A7 as part of a matched antibody pair:

MP00399-1: 83412-3-PBS capture and 83412-2-PBS detection (validated in Cytometric bead array)

MP00399-2: 83412-1-PBS capture and 83412-2-PBS detection (validated in Cytometric bead array)

Unconjugated rabbit recombinant monoclonal antibody in PBS only (BSA and azide free) storage buffer at a concentration of 1 mg/mL, ready for conjugation. Created using Proteintech's proprietary in-house recombinant technology. Recombinant production enables unrivalled batch-to-batch consistency, easy scale-up, and future security of supply.

This conjugation ready format makes antibodies ideal for use in many applications including: ELISAs, multiplex assays requiring matched pairs, mass cytometry, and multiplex imaging applications. Antibody use should be optimized by the end user for each application and assay.

Storage

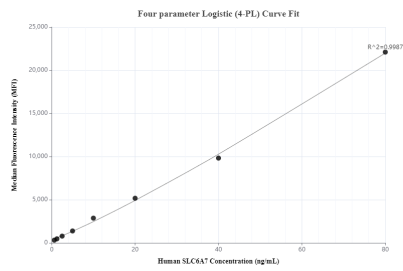
Storage:
Store at -80°C.

Storage Buffer:
PBS Only

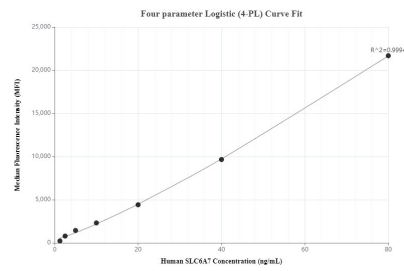
For technical support and original validation data for this product please contact:
T: 1 (888) 4PTGLAB (1-888-478-4522) (toll free in USA), or 1(312) 455-8498 (outside USA)
E: proteintech@ptglab.com
W: ptglab.com

This product is exclusively available under Proteintech Group brand and is not available to purchase from any other manufacturer.

Selected Validation Data



Cytometric bead array standard curve of MP00399-1, SLC6A7 Recombinant Matched Antibody Pair, PBS Only. Capture antibody: 83412-3-PBS. Detection antibody: 83412-2-PBS. Standard: Ag34413. Range: 0.625-80 ng/mL



Cytometric bead array standard curve of MP00399-2, SLC6A7 Recombinant Matched Antibody Pair, PBS Only. Capture antibody: 83412-1-PBS. Detection antibody: 83412-2-PBS. Standard: Ag34413. Range: 1.25-80 ng/mL