

For Research Use Only

SLC6A7 Recombinant antibody, PBS Only

Catalog Number: 83412-4-PBS



Basic Information

Catalog Number: 83412-4-PBS	GenBank Accession Number: BC093785	Purification Method: Protein A purification
Size: 100ug , Concentration: 1 mg/ml by Nanodrop;	GeneID (NCBI): 6534	CloneNo.: 240395H5
Source: Rabbit	UNIPROT ID: Q99884	
Isotype: IgG	Full Name: solute carrier family 6 (neurotransmitter transporter, L-proline), member 7	
Immunogen Catalog Number: AG34413	Calculated MW: 636 aa, 71 kDa	

Applications

Tested Applications:
IHC, ELISA

Species Specificity:
human, mouse, rat

Background Information

SLC6A7 also known as PROT, belongs to the solute Carrier 6 gene family. SLC6A7 is a high-affinity mammalian brain L-proline transporter, which is different from other sodium-dependent plasma membrane carriers, and has unique pharmacological specificity, kinetic properties, and ionic requirements. SLC6A7 is a brain specific sodium (and chloride)-dependent proline transporter, that terminates the action of proline by its high affinity sodium-dependent reuptake into presynaptic terminals(PMID: 7651355).

Storage

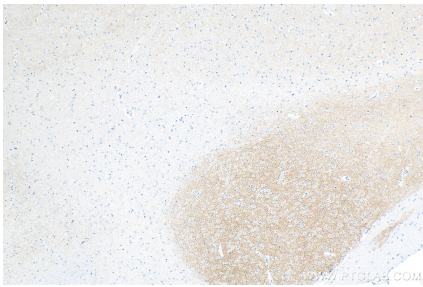
Storage:
Store at -80°C.

Storage Buffer:
PBS Only

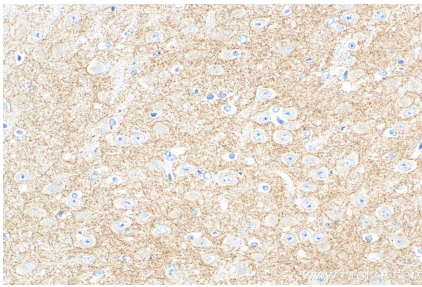
For technical support and original validation data for this product please contact:
T: 1 (888) 4PTGLAB (1-888-478-4522) (toll free in USA), or 1(312) 455-8498 (outside USA)
E: proteintech@ptglab.com
W: ptglab.com

This product is exclusively available under Proteintech Group brand and is not available to purchase from any other manufacturer.

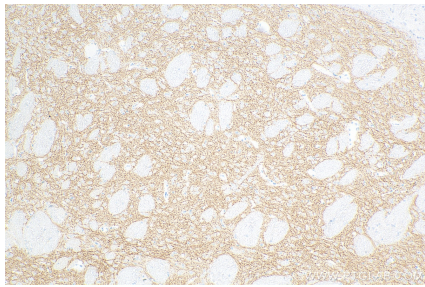
Selected Validation Data



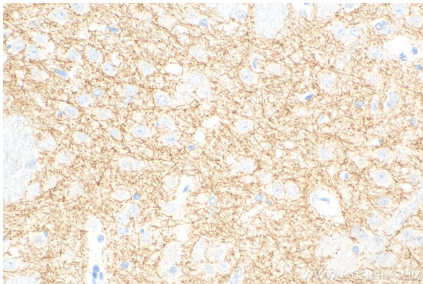
Immunohistochemical analysis of paraffin-embedded mouse brain tissue slide using 83412-4-RR (SLC6A7 antibody) at dilution of 1:400 (under 10x lens). Heat mediated antigen retrieval with Tris-EDTA buffer (pH 9.0). This data was developed using the same antibody clone with 83412-4-PBS in a different storage buffer formulation.



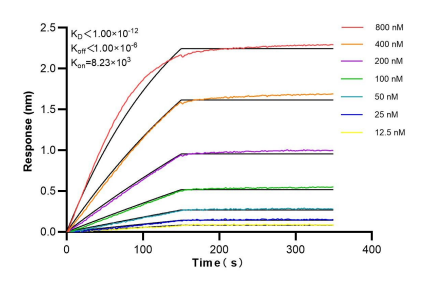
Immunohistochemical analysis of paraffin-embedded mouse brain tissue slide using 83412-4-RR (SLC6A7 antibody) at dilution of 1:400 (under 40x lens). Heat mediated antigen retrieval with Tris-EDTA buffer (pH 9.0). This data was developed using the same antibody clone with 83412-4-PBS in a different storage buffer formulation.



Immunohistochemical analysis of paraffin-embedded rat brain tissue slide using 83412-4-RR (SLC6A7 antibody) at dilution of 1:400 (under 10x lens). Heat mediated antigen retrieval with Tris-EDTA buffer (pH 9.0). This data was developed using the same antibody clone with 83412-4-PBS in a different storage buffer formulation.



Immunohistochemical analysis of paraffin-embedded rat brain tissue slide using 83412-4-RR (SLC6A7 antibody) at dilution of 1:400 (under 40x lens). Heat mediated antigen retrieval with Tris-EDTA buffer (pH 9.0). This data was developed using the same antibody clone with 83412-4-PBS in a different storage buffer formulation.



Biolayer interferometry (BLI) kinetic assays of 83412-4-RR against Human SLC6A 7 were performed. The affinity constant is below 1 pM.