

For Research Use Only

SLC6A7 Recombinant antibody

Catalog Number: 83412-4-RR



Basic Information

Catalog Number: 83412-4-RR	GenBank Accession Number: BC093785	Purification Method: Protein A purification
Size: 100ul , Concentration: 1000 ug/ml by Nanodrop;	GeneID (NCBI): 6534	CloneNo.: 240395H5
Source: Rabbit	UNIPROT ID: Q99884	Recommended Dilutions: IHC 1:200-1:800
Isotype: IgG	Full Name: solute carrier family 6 (neurotransmitter transporter, L-proline), member 7	
Immunogen Catalog Number: AG34413	Calculated MW: 636 aa, 71 kDa	

Applications

Tested Applications: IHC, ELISA	Positive Controls: IHC : rat brain tissue, mouse brain tissue
Species Specificity: human, mouse, rat	
Note-IHC: suggested antigen retrieval with TE buffer pH 9.0; (*) Alternatively, antigen retrieval may be performed with citrate buffer pH 6.0	

Background Information

SLC6A7 also known as PROT, belongs to the solute Carrier 6 gene family. SLC6A7 is a high-affinity mammalian brain L-proline transporter, which is different from other sodium-dependent plasma membrane carriers, and has unique pharmacological specificity, kinetic properties, and ionic requirements. SLC6A7 is a brain specific sodium (and chloride)-dependent proline transporter, that terminates the action of proline by its high affinity sodium-dependent reuptake into presynaptic terminals(PMID: 7651355).

Storage

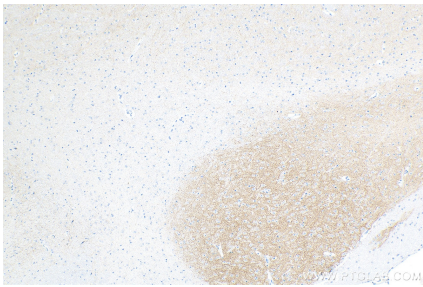
Storage:
Store at -20°C. Stable for one year after shipment.
Storage Buffer:
PBS with 0.02% sodium azide and 50% glycerol pH 7.3.
Aliquoting is unnecessary for -20°C storage

*** 20ul sizes contain 0.1% BSA

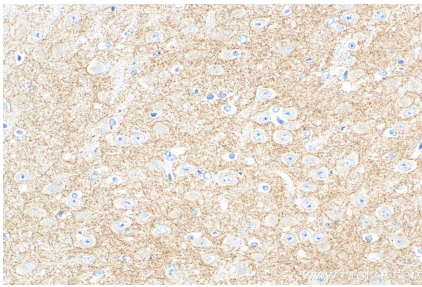
For technical support and original validation data for this product please contact:
T: 1 (888) 4PTGLAB (1-888-478-4522) (toll free in USA), or 1(312) 455-8498 (outside USA)
E: proteintech@ptglab.com
W: ptglab.com

This product is exclusively available under Proteintech Group brand and is not available to purchase from any other manufacturer.

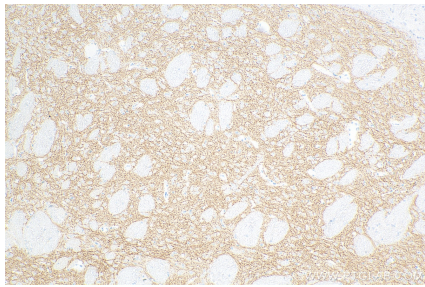
Selected Validation Data



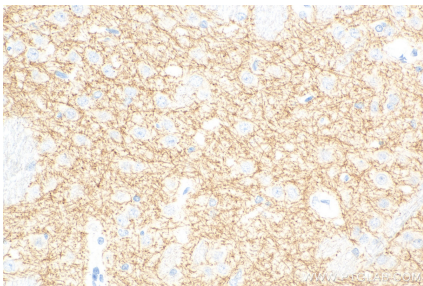
Immunohistochemical analysis of paraffin-embedded mouse brain tissue slide using 83412-4-RR (SLC6A7 antibody) at dilution of 1:400 (under 10x lens). Heat mediated antigen retrieval with Tris-EDTA buffer (pH 9.0).



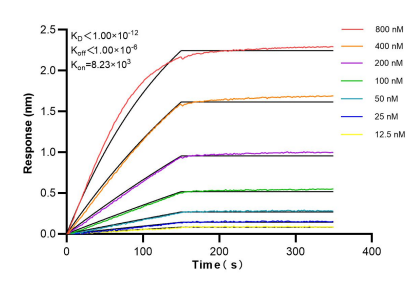
Immunohistochemical analysis of paraffin-embedded mouse brain tissue slide using 83412-4-RR (SLC6A7 antibody) at dilution of 1:400 (under 40x lens). Heat mediated antigen retrieval with Tris-EDTA buffer (pH 9.0).



Immunohistochemical analysis of paraffin-embedded rat brain tissue slide using 83412-4-RR (SLC6A7 antibody) at dilution of 1:400 (under 10x lens). Heat mediated antigen retrieval with Tris-EDTA buffer (pH 9.0).



Immunohistochemical analysis of paraffin-embedded rat brain tissue slide using 83412-4-RR (SLC6A7 antibody) at dilution of 1:400 (under 40x lens). Heat mediated antigen retrieval with Tris-EDTA buffer (pH 9.0).



Biolayer interferometry (BLI) kinetic assays of 83412-4-RR against Human SLC6A7 were performed. The affinity constant is below 1 pM.