

For Research Use Only

Mouse Osteopontin Recombinant antibody, PBS Only (Detector)

Catalog Number: 83413-4-PBS



Basic Information

Catalog Number: 83413-4-PBS	GenBank Accession Number: NM_001204233.1	Purification Method: Protein A purification
Size: 100ug, Concentration: 1 mg/ml by Nanodrop;	GeneID (NCBI): 20750	CloneNo.: 240250F11
Source: Rabbit	UNIPROT ID: Q547B5	
Isotype: IgG	Full Name: secreted phosphoprotein 1	
	Calculated MW: 32kd	

Applications

Tested Applications:
Cytometric bead array, Sandwich ELISA, Indirect ELISA, Sample test

Species Specificity:
mouse

Product Information

83413-4-PBS targets Osteopontin as part of a matched antibody pair.

MP00400-2: 83413-5-PBS capture and 83413-4-PBS detection (validated in Cytometric bead array, Sandwich ELISA)

Unconjugated rabbit recombinant monoclonal antibody in PBS only (BSA and azide free) storage buffer at a concentration of 1 mg/mL, ready for conjugation. Created using Proteintech's proprietary in-house recombinant technology. Recombinant production enables unrivalled batch-to-batch consistency, easy scale-up, and future security of supply.

This conjugation ready format makes antibodies ideal for use in many applications including: ELISAs, multiplex assays requiring matched pairs, mass cytometry, and multiplex imaging applications. Antibody use should be optimized by the end user for each application and assay.

Storage

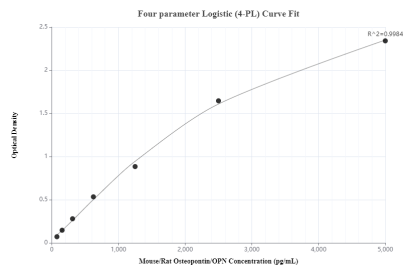
Storage:
Store at -80°C.

Storage Buffer:
PBS Only

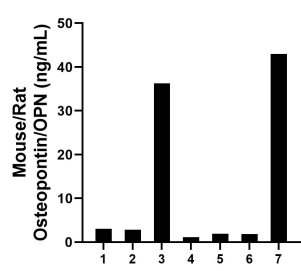
For technical support and original validation data for this product please contact:
T: 1 (888) 4PTGLAB (1-888-478-4522) (toll free in USA), or 1(312) 455-8498 (outside USA)
E: proteintech@ptglab.com
W: ptglab.com

This product is exclusively available under Proteintech Group brand and is not available to purchase from any other manufacturer.

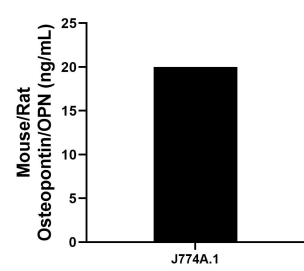
Selected Validation Data



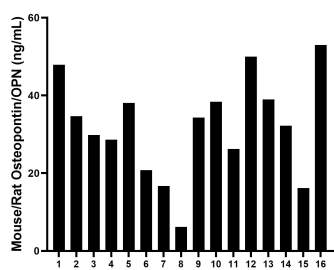
Sandwich ELISA standard curve of MP00400-2, mouse/rat Osteopontin Recombinant Matched Antibody Pair - PBS only. 83413-5-PBS was coated to a plate as the capture antibody and incubated with serial dilutions of standard Eg0317. 83413-4-PBS was HRP conjugated as the detection antibody. Range: 78.1-5000 pg/mL



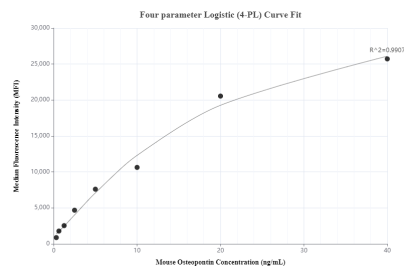
Serum of seven rats was measured. The Osteopontin concentration of detected samples was determined to be 12.8 ng/mL with a range of 1.1 - 43.0 ng/mL



J774A.1 mouse reticulum cell sarcoma macrophage cells were cultured in DMEM supplemented with 10% fetal bovine serum, 2.5 mM L-glutamine, 100 U/mL penicillin and 100 µg/mL streptomycin sulfate. An aliquot of the cell culture supernatant was removed, assayed for mouse/rat Osteopontin and measured 20.0 ng/mL



Serum of sixteen mice was measured. The Osteopontin concentration of detected samples was determined to be 32.0 ng/mL with a range of 6.2 - 53.0 ng/mL



Cytometric bead array standard curve of MP00400-2, MOUSE Osteopontin Recombinant Matched Antibody Pair, PBS Only. Capture antibody: 83413-5-PBS. Detection antibody: 83413-4-PBS. Standard: Eg0317. Range: 0.313-40 ng/mL