

For Research Use Only

# Osteopontin Recombinant antibody

Catalog Number: 83413-6-RR



## Basic Information

<b>Catalog Number:</b> 83413-6-RR	<b>GenBank Accession Number:</b> NM_001204233.1	<b>Purification Method:</b> Protein A purification
<b>Size:</b> 100ul , Concentration: 1000 ug/ml by Nanodrop;	<b>GeneID (NCBI):</b> 20750	<b>CloneNo.:</b> 240250A1
<b>Source:</b> Rabbit	<b>UNIPROT ID:</b> Q547B5	<b>Recommended Dilutions:</b> WB 1:5000-1:50000 IF-P 1:50-1:500 IF/ICC 1:125-1:500
<b>Isotype:</b> IgG	<b>Full Name:</b> secreted phosphoprotein 1	
	<b>Calculated MW:</b> 32kd	
	<b>Observed MW:</b> 60 kDa	

## Applications

<b>Tested Applications:</b> WB, IF/ICC, IF-P, ELISA	<b>Positive Controls:</b>
<b>Species Specificity:</b> mouse	<b>WB :</b> RAW 264.7 cells, <b>IF-P :</b> mouse stomach tissue, <b>IF/ICC :</b> LPS and Brefeldin A treated RAW 264.7 cells,

## Background Information

Osteopontin (OPN) is also named as 2AR, minopontin, bone sialoprotein 1, Spp1, Eta-1 and Op, and belongs to the osteopontin family. Osteopontin is major non-collagenous bone protein that binds tightly to hydroxyapatite. It is a highly phosphorylated glycoprophosphoprotein having acidic characteristics and rich in aspartic acid (PMID: 30003880). And it acts as a cytokine involved in enhancing production of interferon-gamma and interleukin-12 and reducing production of interleukin-10 and is essential in the pathway that leads to type I immunity (PMID:2351930, PMID:10657301). OPN, a multifunctional protein, has important functions on cardiovascular diseases, cancer, diabetes and kidney stone diseases and in the process of inflammation, biomineralization, cell viability and wound healing (PMID: 30003880). Osteopontin (OPN) is a pleiotropic glycoprotein expressed in various cell types in animals and in humans, including bone, immune, smooth muscle, epithelial and endothelial cells. Moreover, OPN is found in kidneys (in the thick ascending limbs of the loop of Henle and in distal nephrons) and urine (PMID:30456594).

## Storage

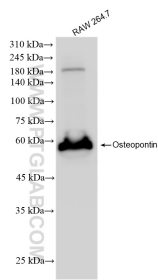
**Storage:**  
Store at -20°C. Stable for one year after shipment.  
**Storage Buffer:**  
PBS with 0.02% sodium azide and 50% glycerol pH 7.3.  
**Aliquoting is unnecessary for -20°C storage**

\*\*\* 20ul sizes contain 0.1% BSA

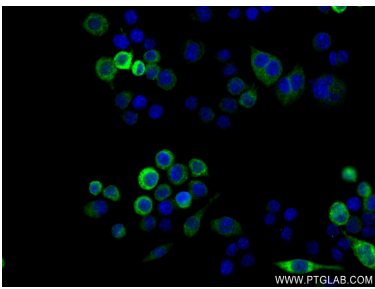
For technical support and original validation data for this product please contact:  
T: 1 (888) 4PTGLAB (1-888-478-4522) (toll free in USA), or 1(312) 455-8498 (outside USA)  
E: proteintech@ptglab.com  
W: ptglab.com

This product is exclusively available under Proteintech Group brand and is not available to purchase from any other manufacturer.

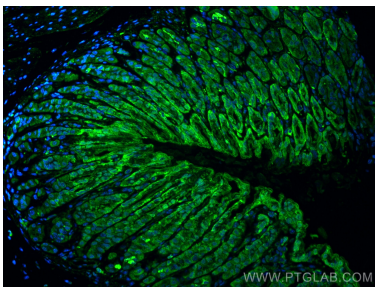
## Selected Validation Data



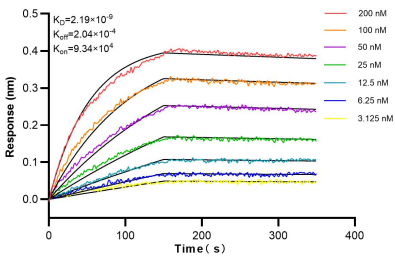
RAW 264.7 cells were subjected to SDS PAGE followed by western blot with 83413-6-RR (Osteopontin antibody) at dilution of 1:10000 incubated at room temperature for 1.5 hours.



Immunofluorescent analysis of (4% PFA) fixed LPS and Brefeldin A treated RAW 264.7 cells using Osteopontin antibody (83413-6-RR, Clone: 240250A1 ) at dilution of 1:250 and CoraLite®488-Conjugated AffiniPure Goat Anti-Rabbit IgG(H+L) (SA00013-2).



Immunofluorescent analysis of (4% PFA) fixed paraffin-embedded mouse stomach tissue using Osteopontin antibody (83413-6-RR, Clone: 240250A1 ) at dilution of 1:200 and CoraLite®488-Conjugated Goat Anti-Rabbit IgG(H+L) (SA00013-2). Heat mediated antigen retrieval with Tris-EDTA buffer (pH 9.0).



Biolayer interferometry (BLI) kinetic assays of 83413-6-RR against Mouse Osteopontin were performed. The affinity constant is 2.19 nM.