

For Research Use Only

TBX20 Recombinant antibody, PBS Only (Capture)

Catalog Number: 83414-3-PBS



Basic Information

Catalog Number: 83414-3-PBS	GenBank Accession Number: BC120946	Purification Method: Protein A purification
Size: 100ug , Concentration: 1 mg/ml by Nanodrop;	GeneID (NCBI): 57057	CloneNo.: 240385H6
Source: Rabbit	UNIPROT ID: Q9UMR3	
Isotype: IgG	Full Name: T-box 20	
Immunogen Catalog Number: AG18501	Calculated MW: 297 aa, 33 kDa	

Applications

Tested Applications:
IHC, IF/ICC, FC (Intra), Cytometric bead array, Indirect ELISA

Species Specificity:
human, mouse, rat

Product Information

83414-3-PBS targets TBX20 as part of a matched antibody pair:

MP00401-1: 83414-3-PBS capture and 83414-1-PBS detection (validated in Cytometric bead array)

Unconjugated rabbit recombinant monoclonal antibody in PBS only (BSA and azide free) storage buffer at a concentration of 1 mg/mL, ready for conjugation. Created using Proteintech's proprietary in-house recombinant technology. Recombinant production enables unrivalled batch-to-batch consistency, easy scale-up, and future security of supply.

This conjugation ready format makes antibodies ideal for use in many applications including: ELISAs, multiplex assays requiring matched pairs, mass cytometry, and multiplex imaging applications. Antibody use should be optimized by the end user for each application and assay.

Background Information

Tbx20 is a transcription factor that is essential for proper heart development in a growing fetus. Any mutations in this gene can result in various forms of congenital heart disease.

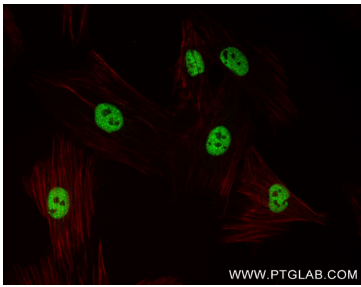
Storage

Storage:
Store at -80°C.
Storage Buffer:
PBS Only

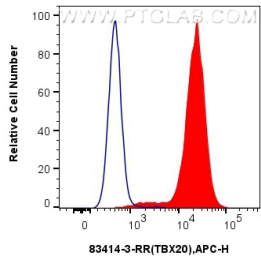
For technical support and original validation data for this product please contact:
T: 1 (888) 4PTGLAB (1-888-478-4522) (toll free in USA), or 1(312) 455-8498 (outside USA)
E: proteintech@ptglab.com
W: ptglab.com

This product is exclusively available under Proteintech Group brand and is not available to purchase from any other manufacturer.

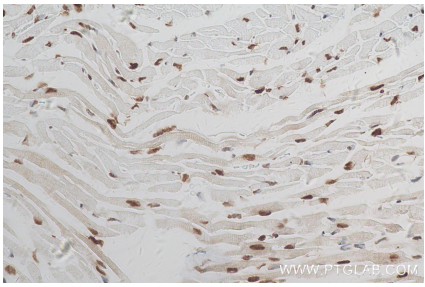
Selected Validation Data



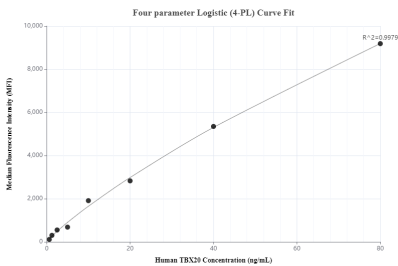
Immunofluorescent analysis of (4% PFA) fixed H9C2 cells using TBX20 antibody (83414-3-RR, Clone: 240385H6) at dilution of 1:250 and Multi-rAb CoraLite® Plus 488-Goat Anti-Rabbit Recombinant Secondary Antibody (H+L) (RGAR002), CL594-Phalloidin (red). This data was developed using the same antibody clone with 83414-3-PBS in a different storage buffer formulation.



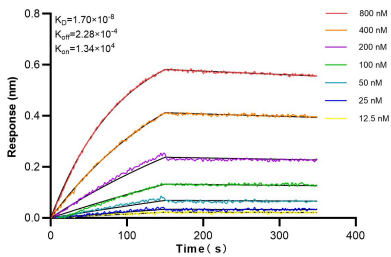
1x10⁶ K562 were intracellularly stained with 0.25 ug Tbx20 Recombinant Antibody (83414-3-RR, Clone:240385H6) and APC-Conjugated AffiniPure Goat Anti-Rabbit IgG(H+L)(red), or 0.25 ug Isotype Control (blue). Cells were fixed and permeabilized with Transcription Factor Staining Buffer Kit (PF00011). This data was developed using the same antibody clone with 83414-3-PBS in a different storage buffer formulation.



Immunohistochemical analysis of paraffin-embedded mouse heart tissue slide using 83414-3-RR (TBX20 antibody) at dilution of 1:4000 (under 40x lens). Heat mediated antigen retrieval with Tris-EDTA buffer (pH 9.0). This data was developed using the same antibody clone with 83414-3-PBS in a different storage buffer formulation.



Cytometric bead array standard curve of MP00401-1, TBX20 Recombinant Matched Antibody Pair, PBS Only. Capture antibody: 83414-3-PBS. Detection antibody: 83414-1-PBS. Standard: Ag18501. Range: 0.625-80 ng/mL.



Biolayer interferometry (BLI) kinetic assays of 83414-3-RR against Human TBX20 were performed. The affinity constant is 17 nM.