

For Research Use Only

PTDSS1 Recombinant antibody, PBS Only

Catalog Number: 83421-1-PBS



Basic Information

| | | |
|---|--|---|
| Catalog Number: 83421-1-PBS | GenBank Accession Number: BC002376 | Purification Method: Protein A purification |
| Size: 100ug , Concentration: 1 mg/ml by Nanodrop; | GeneID (NCBI): 9791 | CloneNo.: 240007G3 |
| Source: Rabbit | UNIPROT ID: P48651 | |
| Isotype: IgG | Full Name: phosphatidylserine synthase 1 | |
| Immunogen Catalog Number: AG14170 | Calculated MW: 473 aa, 56 kDa | |

Applications

Tested Applications:
IF/ICC, FC (Intra), ELISA

Species Specificity:
human

Background Information

Phosphatidylserine Synthase-1 (PTDSS1 or PSS1) is one of two enzymes involved in the production of phosphatidylserine (PS), which is a quantitatively minor, but physiologically important phospholipid in mammalian cells (PMID: 24241535). Mice lacking either Ptdss1 or Ptdss2 are viable, phenotypically normal and fertile, indicating that, in mice, PSS1 and PSS2 can compensate for each other (PMID: 18343815).

Storage

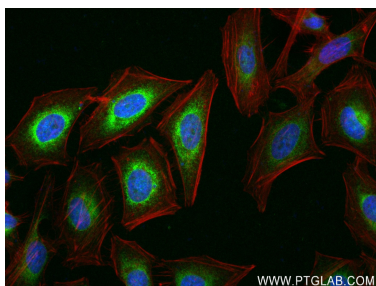
Storage:
Store at -80°C.

Storage Buffer:
PBS Only

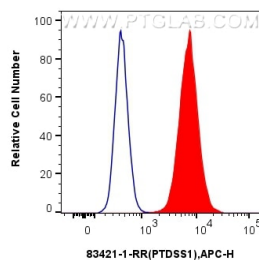
For technical support and original validation data for this product please contact:
T: 1 (888) 4PTGLAB (1-888-478-4522) (toll free in USA), or 1(312) 455-8498 (outside USA)
E: proteintech@ptglab.com
W: ptglab.com

This product is exclusively available under Proteintech Group brand and is not available to purchase from any other manufacturer.

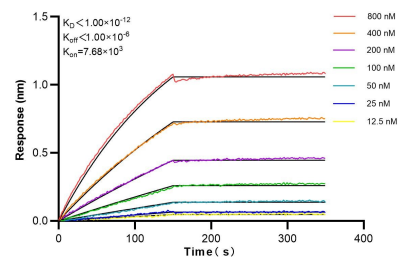
Selected Validation Data



Immunofluorescent analysis of (4% PFA) fixed HeLa cells using PTDSS1 antibody (83421-1-RR, Clone: 240007G3) at dilution of 1:400 and CoraLite®488-Conjugated Goat Anti-Rabbit IgG(H+L) (SA00013-2), CL594-Phalloidin (red). This data was developed using the same antibody clone with 83421-1-PBS in a different storage buffer formulation.



1×10^6 HepG2 cells were intracellularly stained with 0.25 μ g PTDSS1 Recombinant antibody (83421-1-RR, Clone:240007G3) and APC-Conjugated AffiniPure Goat Anti-Rabbit IgG(H+L) (red), or 0.25 μ g Isotype Control (blue). Cells were fixed with 4% PFA and permeabilized with Flow Cytometry Perm Buffer (PF00011-C). This data was developed using the same antibody clone with 83421-1-PBS in a different storage buffer formulation.



Biolayer interferometry (BLI) kinetic assays of 83421-1-RR against Human PTDSS1 were performed. The affinity constant is below 1 pM.