

For Research Use Only

PTDSS1 Recombinant antibody

Catalog Number: 83421-1-RR



Basic Information

Catalog Number: 83421-1-RR	GenBank Accession Number: BC002376	Purification Method: Protein A purification
Size: 100ul , Concentration: 600 ug/ml by Nanodrop;	GeneID (NCBI): 9791	CloneNo.: 240007G3
Source: Rabbit	UNIPROT ID: P48651	Recommended Dilutions: IF/ICC 1:200-1:800
Isotype: IgG	Full Name: phosphatidylserine synthase 1	
Immunogen Catalog Number: AG14170	Calculated MW: 473 aa, 56 kDa	

Applications

Tested Applications: IF/ICC, FC (Intra), ELISA	Positive Controls: IF/ICC : Hela cells,
Species Specificity: human	

Background Information

Phosphatidylserine Synthase-1 (PTDSS1 or PSS1) is one of two enzymes involved in the production of phosphatidylserine (PS), which is a quantitatively minor, but physiologically important phospholipid in mammalian cells (PMID: 24241535). Mice lacking either Ptdss1 or Ptdss2 are viable, phenotypically normal and fertile, indicating that, in mice, PSS1 and PSS2 can compensate for each other (PMID: 18343815).

Storage

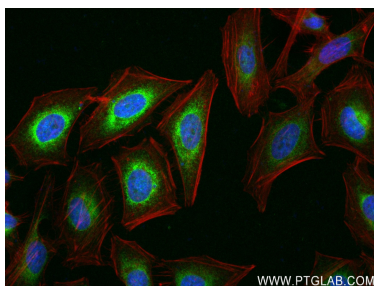
Storage:
Store at -20°C. Stable for one year after shipment.
Storage Buffer:
PBS with 0.02% sodium azide and 50% glycerol pH 7.3.
Aliquoting is unnecessary for -20°C storage

*** 20ul sizes contain 0.1% BSA

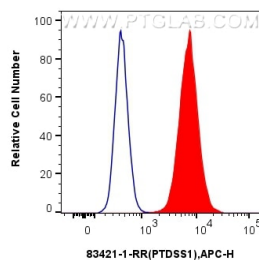
For technical support and original validation data for this product please contact:
T: 1 (888) 4PTGLAB (1-888-478-4522) (toll free in USA), or 1(312) 455-8498 (outside USA)
E: proteintech@ptglab.com
W: ptglab.com

This product is exclusively available under Proteintech Group brand and is not available to purchase from any other manufacturer.

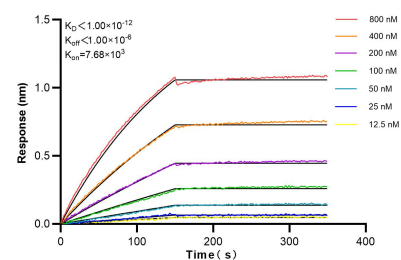
Selected Validation Data



Immunofluorescent analysis of (4% PFA) fixed HeLa cells using PTDSS1 antibody (83421-1-RR, Clone: 240007G3) at dilution of 1:400 and CoraLite®488-Conjugated Goat Anti-Rabbit IgG(H+L) (SA00013-2), CL594-Phalloidin (red).



1x10⁶ HepG2 cells were intracellularly stained with 0.25 µg PTDSS1 Recombinant antibody (83421-1-RR, Clone:240007G3) and APC-Conjugated AffiniPure Goat Anti-Rabbit IgG(H+L) (red), or 0.25 µg Isotype Control (blue). Cells were fixed with 4% PFA and permeabilized with Flow Cytometry Perm Buffer (PF00011-C).



Biolayer interferometry (BLI) kinetic assays of 83421-1-RR against Human PTDSS1 were performed. The affinity constant is below 1 pM.