

For Research Use Only

LBP Recombinant antibody

Catalog Number: 83427-1-RR



Basic Information

Catalog Number: 83427-1-RR	GenBank Accession Number: NM_004139.4	Purification Method: Protein A purification
Size: 100ul , Concentration: 1000 ug/ml by Nanodrop;	GeneID (NCBI): 3929	CloneNo.: 230524G10
Source: Rabbit	UNIPROT ID: P18428	Recommended Dilutions: WB 1:5000-1:50000
Isotype: IgG	Full Name: lipopolysaccharide binding protein	
	Calculated MW: 53KD	
	Observed MW: 63-67 kDa	

Applications

Tested Applications: WB, ELISA	Positive Controls: WB : A431 cells,
Species Specificity: human	

Background Information

LBP (lipopolysaccharide-binding protein) is an acute-phase protein, predominantly synthesized by hepatocytes. It is present in normal serum at concentrations of 5 to 10 µg/ml, rising up to 200 µg/ml 24 h after induction of an acute-phase response. LBP binds to the lipid A moiety of bacterial lipopolysaccharides (LPS), a glycolipid present in the outer membrane of all Gram-negative bacteria, and acts as an affinity enhancer for CD14, facilitating its association with LPS. (PMID: 9665271; 11598069)

Storage

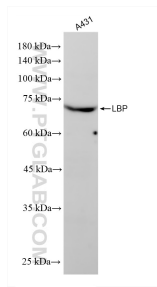
Storage:
Store at -20°C. Stable for one year after shipment.
Storage Buffer:
PBS with 0.02% sodium azide and 50% glycerol pH 7.3.
Aliquoting is unnecessary for -20°C storage

*** 20ul sizes contain 0.1% BSA

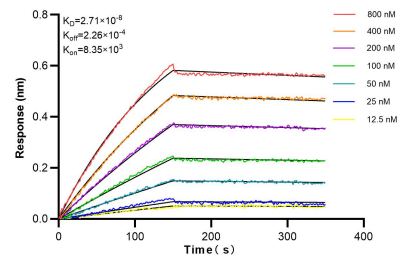
For technical support and original validation data for this product please contact:
T: 1 (888) 4PTGLAB (1-888-478-4522) (toll free in USA), or 1(312) 455-8498 (outside USA)
E: proteintech@ptglab.com
W: ptglab.com

This product is exclusively available under Proteintech Group brand and is not available to purchase from any other manufacturer.

Selected Validation Data



A431 cells were subjected to SDS PAGE followed by western blot with 83427-1-RR (LBP antibody) at dilution of 1:10000 incubated at room temperature for 1.5 hours.



Biolayer interferometry (BLI) kinetic assays of 83427-1-RR against Human LBP were performed. The affinity constant is 27.1 nM.