

For Research Use Only

LBP Recombinant antibody, PBS Only (Capture/Detector)

Catalog Number: 83427-4-PBS



Basic Information

Catalog Number: 83427-4-PBS	GenBank Accession Number: NM_004139.4	Purification Method: Protein A purification
Size: 100ug , Concentration: 1 mg/ml by Nanodrop;	GeneID (NCBI): 3929	CloneNo.: 241106F12
Source: Rabbit	UNIPROT ID: P18428	
Isotype: IgG	Full Name: lipopolysaccharide binding protein	
	Calculated MW: 53KD	

Applications

Tested Applications:
Cytometric bead array, Sandwich ELISA, Indirect ELISA, Sample test

Species Specificity:
human

Product Information

83427-4-PBS targets LBP as part of a matched antibody pair:

MP00906-1: 83427-2-PBS capture and 83427-4-PBS detection (validated in Cytometric bead array)

MP00906-3: 83427-3-PBS capture and 83427-4-PBS detection (validated in Cytometric bead array)

MP00906-4: 83427-4-PBS capture and 83427-2-PBS detection (validated in Sandwich ELISA)

Unconjugated rabbit recombinant monoclonal antibody in PBS only (BSA and azide free) storage buffer at a concentration of 1 mg/mL, ready for conjugation. Created using Proteintech's proprietary in-house recombinant technology. Recombinant production enables unrivalled batch-to-batch consistency, easy scale-up, and future security of supply.

This conjugation ready format makes antibodies ideal for use in many applications including: ELISAs, multiplex assays requiring matched pairs, mass cytometry, and multiplex imaging applications. Antibody use should be optimized by the end user for each application and assay.

Storage

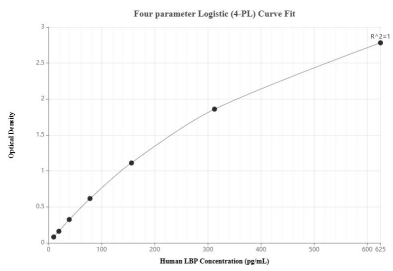
Storage:
Store at -80°C.

Storage Buffer:
PBS Only

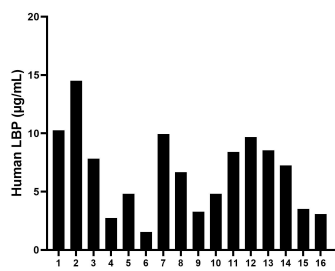
For technical support and original validation data for this product please contact:
T: 1 (888) 4PTGLAB (1-888-478-4522) (toll free in USA), or 1(312) 455-8498 (outside USA)
E: proteintech@ptglab.com
W: ptglab.com

This product is exclusively available under Proteintech Group brand and is not available to purchase from any other manufacturer.

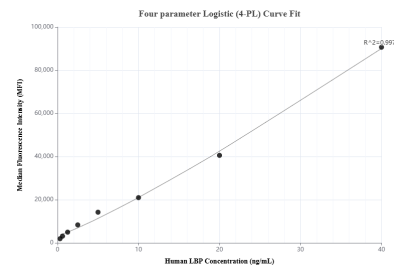
Selected Validation Data



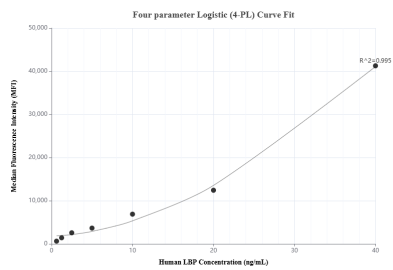
Sandwich ELISA standard curve of MP00906-4, Human LBP Recombinant Matched Antibody Pair - PBS only. 83427-4-PBS was coated to a plate as the capture antibody and incubated with serial dilutions of standard Eg0651. 83427-2-PBS was HRP conjugated as the detection antibody. Range: 9.77-625 pg/mL



Serum of sixteen individual healthy human donors was measured. The human LBP concentration of detected samples was determined to be 6.7 µg/mL with a range of 1.5 - 14.5 µg/mL.



Cytometric bead array standard curve of MP00906-1, LBP Recombinant Matched Antibody Pair, PBS Only. Capture antibody: 83427-2-PBS. Detection antibody: 83427-4-PBS. Standard: Eg0651. Range: 0.313-40 ng/mL



Cytometric bead array standard curve of MP00906-3, LBP Recombinant Matched Antibody Pair, PBS Only. Capture antibody: 83427-3-PBS. Detection antibody: 83427-4-PBS. Standard: Eg0651. Range: 0.625-40 ng/mL