

For Research Use Only

# PLK2 Recombinant antibody, PBS Only



Catalog Number: 83431-1-PBS

## Basic Information

<b>Catalog Number:</b> 83431-1-PBS	<b>GenBank Accession Number:</b> BC013879	<b>Purification Method:</b> Protein A purification
<b>Size:</b> 100ug , Concentration: 1 mg/ml by Nanodrop;	<b>GeneID (NCBI):</b> 10769	<b>CloneNo.:</b> 230520B2
<b>Source:</b> Rabbit	<b>UNIPROT ID:</b> Q9NYY3	
<b>Isotype:</b> IgG	<b>Full Name:</b> polo-like kinase 2 (Drosophila)	
<b>Immunogen Catalog Number:</b> AG29837	<b>Calculated MW:</b> 685 aa, 78 kDa	

## Applications

**Tested Applications:**  
IF/ICC, ELISA

**Species Specificity:**  
human

## Storage

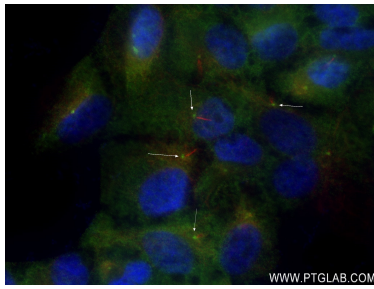
**Storage:**  
Store at -80°C.

**Storage Buffer:**  
PBS Only

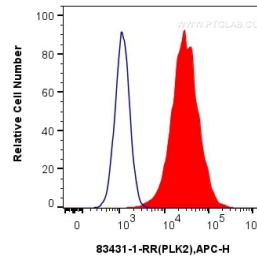
For technical support and original validation data for this product please contact:  
T: 1 (888) 4PTGLAB (1-888-478-4522) (toll free in USA), or 1(312) 455-8498 (outside USA)  
E: [proteintech@ptglab.com](mailto:proteintech@ptglab.com)  
W: [ptglab.com](http://ptglab.com)

This product is exclusively available under Proteintech Group brand and is not available to purchase from any other manufacturer.

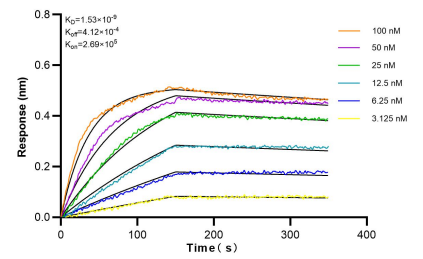
## Selected Validation Data



Immunofluorescent analysis of (4% PFA) fixed hTERT-RPE1 cells using PLK2 antibody (83431-1-RR, Clone: 230520B2 ) at dilution of 1:400 and CoraLite®488-Conjugated AffiniPure Goat Anti-Rabbit IgG(H+L) (SA00013-2), Acetyl-Tubulin (Lys40) antibody (66200-1-Ig, Clone: 7E5H8, red). This data was developed using the same antibody clone with 83431-1-PBS in a different storage buffer formulation.



$1 \times 10^6$  A549 cells were intracellularly stained with 0.25  $\mu$ g PLK2 Recombinant Antibody (83431-1-RR, Clone:230520B2) and APC-Conjugated AffiniPure Goat Anti-Rabbit IgG(H+L)(red), or 0.25  $\mu$ g Isotype Control (blue). Cells were fixed with 4% PFA and permeabilized with Flow Cytometry Perm Buffer (PF00011-C). This data was developed using the same antibody clone with 83431-1-PBS in a different storage buffer formulation.



Biolayer interferometry (BLI) kinetic assays of 83431-1-RR against Human PLK2 were performed. The affinity constant is 1.53 nM.