

For Research Use Only

RAB31 Recombinant monoclonal antibody

Catalog Number: 83434-2-RR



Basic Information

Catalog Number: 83434-2-RR	GenBank Accession Number: NM_006868	Purification Method: Protein A purification
Size: 100ul , Concentration: 1000 ug/ml by Nanodrop;	GeneID (NCBI): 11031	CloneNo.: 250075C7
Source: Rabbit	UNIPROT ID: Q13636	Recommended Dilutions: WB: 1:5000-1:50000 IF/ICC: 1:200-1:800
Isotype: IgG	Full Name: RAB31, member RAS oncogene family	
	Calculated MW: 22 kDa	
	Observed MW: 22 kDa	

Applications

Tested Applications: WB, IF/ICC, ELISA	Positive Controls: WB : K-562 cells, mouse brain tissue, rat brain tissue
Species Specificity: human, mouse, rat	IF/ICC : HepG2 cells,

Background Information

RAB 31, also named as RAB22b, belongs to small GTP-binding proteins of the RAB family. Rab31 localizes in the trans-Golgi network (TGN) and endosomes. It is required for transport of mannose 6-phosphate receptors (MPRs) from the trans-Golgi network (TGN) to endosomes. This antibody can bind RAB31 specifically, and not react RAB22a.

Storage

Storage:
Store at -20°C. Stable for one year after shipment.
Storage Buffer:
PBS with 0.02% sodium azide and 50% glycerol, pH7.3
Aliquoting is unnecessary for -20°C storage

*** 20ul sizes contain 0.1% BSA

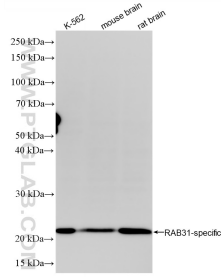
For technical support and original validation data for this product please contact:

T: 1 (888) 4PTGLAB (1-888-478-4522) (toll free in USA), or 1(312) 455-8498 (outside USA)

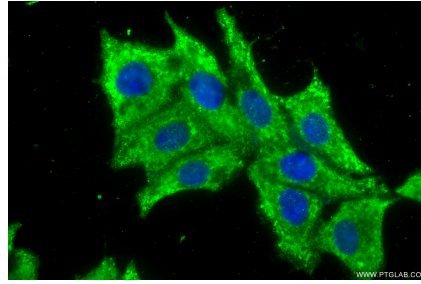
E: proteintech@ptglab.com
W: ptglab.com

This product is exclusively available under Proteintech Group brand and is not available to purchase from any other manufacturer.

Selected Validation Data



Various lysates were subjected to SDS PAGE followed by western blot with 83434-2-RR (RAB31 antibody) at dilution of 1:10000 incubated at room temperature for 1.5 hours.



Immunofluorescent analysis of (-20°C Methanol) fixed HepG2 cells using RAB31 antibody (83434-2-RR, Clone: 250075C7) at dilution of 1:400 and CoraLite® 488-Conjugated Goat Anti-Rabbit IgG(H+L) (SA00013-2).