

For Research Use Only

TMEM126A Recombinant antibody

Catalog Number: 83440-2-RR



Basic Information

Catalog Number:

83440-2-RR

Size:

100ul , Concentration: 1000 ug/ml by Nanodrop;

Source:

Rabbit

Isotype:

IgG

Immunogen Catalog Number:

AG14705

GenBank Accession Number:

BC007875

GeneID (NCBI):

84233

UNIPROT ID:

Q9H061

Full Name:

transmembrane protein 126A

Calculated MW:

195 aa, 22 kDa

Observed MW:

20-25 kDa

Purification Method:

Protein A purification

CloneNo.:

240425A11

Recommended Dilutions:

WB 1:2000-1:10000

IF/ICC 1:500-1:2000

Applications

Tested Applications:

WB, IF/ICC, ELISA

Species Specificity:

human

Positive Controls:

WB : T-47D cells, HeLa cells, MCF-7 cells, U-251 cells, U2OS cells, human placenta tissue

IF/ICC : HeLa cells,

Background Information

TMEM126A is a mitochondrial inner membrane protein that is enriched in the cristae. TMEM126A is necessary for Complex I assembly or stability. Complex I (CI) is the largest enzyme of the mitochondrial respiratory chain, and its defects are the main cause of mitochondrial disease.

Storage

Storage:

Store at -20°C. Stable for one year after shipment.

Storage Buffer:

PBS with 0.02% sodium azide and 50% glycerol pH 7.3.

Aliquoting is unnecessary for -20°C storage

*** 20ul sizes contain 0.1% BSA

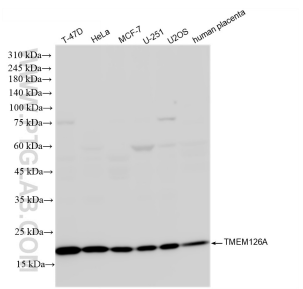
For technical support and original validation data for this product please contact:

T: 1 (888) 4PTGLAB (1-888-478-4522) (toll free in USA), or 1(312) 455-8498 (outside USA)

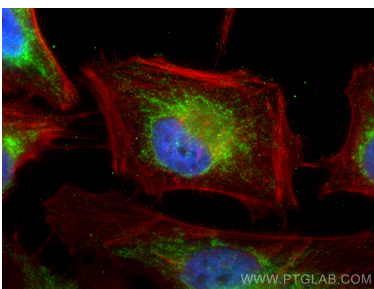
E: proteintech@ptglab.com
W: ptglab.com

This product is exclusively available under Proteintech Group brand and is not available to purchase from any other manufacturer.

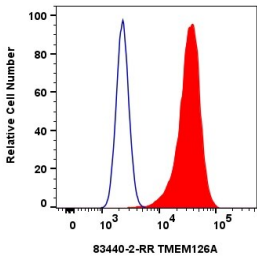
Selected Validation Data



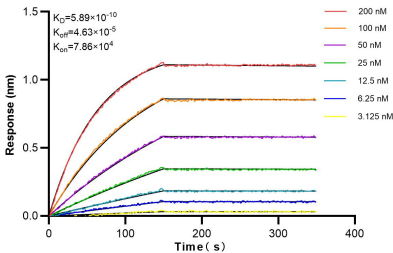
Various lysates were subjected to SDS PAGE followed by western blot with 83440-2-RR (TMEM126A antibody) at dilution of 1:5000 incubated at room temperature for 1.5 hours.



Immunofluorescent analysis of (4% PFA) fixed HeLa cells using TMEM126A antibody (83440-2-RR, Clone: 240425A11) at dilution of 1:1000 and Multi-rAb CoraLite® Plus 488-Goat Anti-Rabbit Recombinant Secondary Antibody (H+L) (RGAR002), CL594-Phalloidin (red).



1x10⁶ HeLa cells were intracellularly stained with 0.25 ug TMEM126A Recombinant antibody (83440-2-RR, Clone:240425A11) and CoraLite®488-Conjugated Goat Anti-Rabbit IgG(H+L) (SA00013-2) (red), or 0.25 ug Rabbit IgG Isotype Control Recombinant Antibody (98136-1-RR, Clone: 240953C9) (blue). Cells were fixed with 4% PFA and permeabilized with Flow Cytometry Perm Buffer (PF00011-C).



Biolayer interferometry (BLI) kinetic assays of 83440-2-RR against Human TMEM126A were performed. The affinity constant is 0.589 nM.