

For Research Use Only

SLC2A10 Recombinant antibody, PBS Only



Catalog Number: 83441-3-PBS

Basic Information

Catalog Number: 83441-3-PBS	GenBank Accession Number: BC101657	Purification Method: Protein A purification
Size: 100ug , Concentration: 1 mg/ml by Nanodrop;	GeneID (NCBI): 81031	CloneNo.: 240335E12
Source: Rabbit	UNIPROT ID: O95528	
Isotype: IgG	Full Name: solute carrier family 2 (facilitated glucose transporter), member 10	
Immunogen Catalog Number: AG14210	Calculated MW: 541 aa, 57 kDa	

Applications

Tested Applications:
WB, ELISA

Species Specificity:
human, mouse

Storage

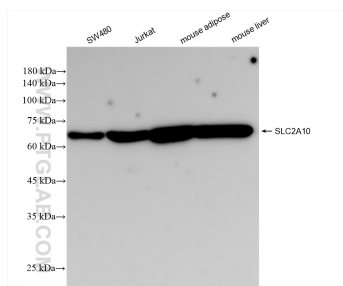
Storage:
Store at -80°C.

Storage Buffer:
PBS Only

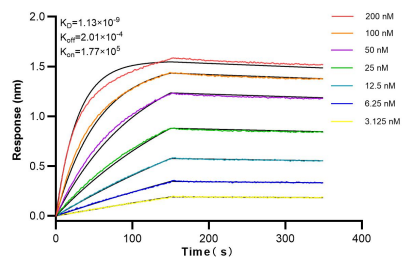
For technical support and original validation data for this product please contact:
T: 1 (888) 4PTGLAB (1-888-478-4522) (toll free in USA), or 1(312) 455-8498 (outside USA)
E: proteintech@ptglab.com
W: ptglab.com

This product is exclusively available under Proteintech Group brand and is not available to purchase from any other manufacturer.

Selected Validation Data



Various lysates were subjected to SDS PAGE followed by western blot with 83441-3-RR (SLC2A10 antibody) at dilution of 1:10000 incubated at room temperature for 1.5 hours. This data was developed using the same antibody clone with 83441-3-PBS in a different storage buffer formulation.



Biolayer interferometry (BLI) kinetic assays of 83441-3-RR against Human SLC2A10 were performed. The affinity constant is 0.43 nM.