

SLCO1A2 Recombinant antibody, PBS Only (Capture/Detector)

Catalog Number: 83446-1-PBS

Basic Information

Catalog Number: 83446-1-PBS	GenBank Accession Number: NM_021094	Purification Method: Protein A purification
Size: 100ug , Concentration: 1 mg/ml by Nanodrop;	GeneID (NCBI): 6579	CloneNo.: 240484B11
Source: Rabbit	UNIPROT ID: P46721	
Isotype: IgG	Full Name: solute carrier organic anion transporter family, member 1A2	
Immunogen Catalog Number: AG34497	Calculated MW: 670 aa, 74 kDa	

Applications

Tested Applications:
Indirect ELISA, Cytometric bead array

Species Specificity:
Human

Product Information

83446-1-PBS targets SLCO1A2 as part of a matched antibody pair:

MP00452-2: 83446-1-PBS capture and 83446-4-PBS detection (validated in Cytometric bead array)

MP00452-3: 83446-2-PBS capture and 83446-1-PBS detection (validated in Cytometric bead array)

Unconjugated rabbit recombinant monoclonal antibody in PBS only (BSA and azide free) storage buffer at a concentration of 1 mg/mL, ready for conjugation. Created using Proteintech's proprietary in-house recombinant technology. Recombinant production enables unrivalled batch-to-batch consistency, easy scale-up, and future security of supply.

This conjugation ready format makes antibodies ideal for use in many applications including: ELISAs, multiplex assays requiring matched pairs, mass cytometry, and multiplex imaging applications. Antibody use should be optimized by the end user for each application and assay.

Storage

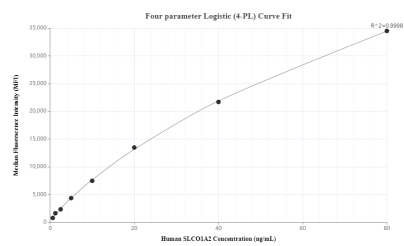
Storage:
Store at -80°C.
Storage Buffer:
PBS Only

For technical support and original validation data for this product please contact:
T: 1 (888) 4PTGLAB (1-888-478-4522) (toll free in USA), or 1(312) 455-8498 (outside USA)
E: proteintech@ptglab.com
W: ptglab.com

This product is exclusively available under Proteintech Group brand and is not available to purchase from any other manufacturer.

Selected Validation Data

Cytometric bead array standard curve of MP00452-2, SLC01A2 Recombinant Matched Antibody Pair, PBS Only. Capture antibody: 83446-1-PBS. Detection antibody: 83446-4-PBS. Standard: Ag34497. Range: 0.625-80 ng/mL



Cytometric bead array standard curve of MP00452-3, SLC01A2 Recombinant Matched Antibody Pair, PBS Only. Capture antibody: 83446-2-PBS. Detection antibody: 83446-1-PBS. Standard: Ag34497. Range: 0.625-80 ng/mL