

For Research Use Only

# TMEM119 Recombinant antibody, PBS Only (Detector)

Catalog Number: 83448-3-PBS



## Basic Information

Catalog Number:

83448-3-PBS

Size:

100ug, Concentration: 1 mg/ml by Nanodrop;

Source:

Rabbit

Isotype:

IgG

GenBank Accession Number:

NM\_181724.2

GeneID (NCBI):

338773

UNIPROT ID:

Q4V9L6

Full Name:

transmembrane protein 119

Calculated MW:

29 kDa

Purification Method:

Protein A purification

CloneNo.:

240433D12

## Applications

Tested Applications:

Cytometric bead array, Sandwich ELISA, Indirect ELISA, Sample test

Species Specificity:

human

## Product Information

83448-3-PBS targets TMEM119 as part of a matched antibody pair:

MP00444-1: 83448-5-PBS capture and 83448-3-PBS detection (validated in Cytometric bead array)

MP00444-4: 83448-4-PBS capture and 83448-3-PBS detection (validated in Sandwich ELISA)

Unconjugated rabbit recombinant monoclonal antibody in PBS only (BSA and azide free) storage buffer at a concentration of 1 mg/mL, ready for conjugation. Created using Proteintech's proprietary in-house recombinant technology. Recombinant production enables unrivalled batch-to-batch consistency, easy scale-up, and future security of supply.

This conjugation ready format makes antibodies ideal for use in many applications including: ELISAs, multiplex assays requiring matched pairs, mass cytometry, and multiplex imaging applications. Antibody use should be optimized by the end user for each application and assay.

## Storage

Storage:

Store at -80°C.

Storage Buffer:

PBS Only

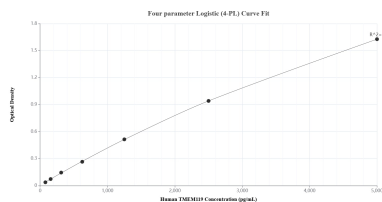
For technical support and original validation data for this product please contact:

T: 1 (888) 4PTGLAB (1-888-478-4522) (toll free in USA), or 1(312) 455-8498 (outside USA)

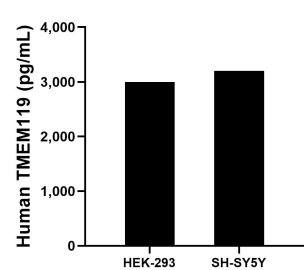
E: [proteintech@ptglab.com](mailto:proteintech@ptglab.com)  
W: [ptglab.com](http://ptglab.com)

This product is exclusively available under Proteintech Group brand and is not available to purchase from any other manufacturer.

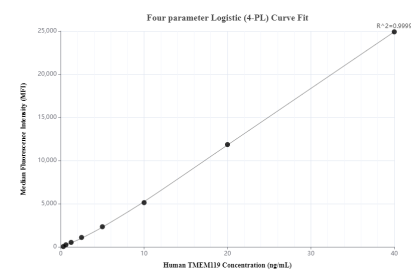
## Selected Validation Data



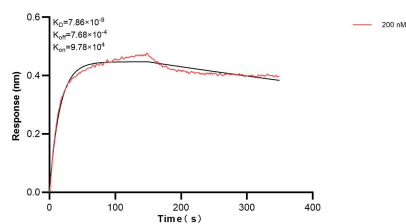
Sandwich ELISA standard curve of MP00444-4, Human TMEM119 Recombinant Matched Antibody Pair - PBS only. 83448-4-PBS was coated to a plate as the capture antibody and incubated with serial dilutions of standard Eg0796. 83448-3-PBS was HRP conjugated as the detection antibody. Range: 78.1-5000 pg/mL.



The mean TMEM119 concentration was determined to be 2,998.4 pg/mL in HEK-293 cell extract based on a 1.5 mg/mL extract load and 3,201.6 pg/mL in SH-SY5Y cell extract based on a 1.2 mg/mL extract load.



Cytometric bead array standard curve of MP00444-1, TMEM119 Recombinant Matched Antibody Pair, PBS Only. Capture antibody: 83448-5-PBS. Detection antibody: 83448-3-PBS. Standard: Eg0796. Range: 0.313-40 ng/mL.



Biolayer interferometry (BLI) kinetic assay of 83448-3-PBS against Human TMEM119 was performed. The affinity constant is 7.66 nM.