

For Research Use Only

PLXDC2 Recombinant antibody, PBS Only

Catalog Number: 83449-4-PBS



Basic Information

Catalog Number:

83449-4-PBS

Size:

100ug, Concentration: 1 mg/ml by Nanodrop;

Source:

Rabbit

Isotype:

IgG

Immunogen Catalog Number:

AG2940

GenBank Accession Number:

BC012885

GeneID (NCBI):

84898

UNIPROT ID:

Q6UX71

Full Name:

plexin domain containing 2

Calculated MW:

480 aa, 54 kDa

Observed MW:

54 kDa

Purification Method:

Protein A purification

CloneNo.:

240174A11

Applications

Tested Applications:

WB, IHC, ELISA

Species Specificity:

human

Background Information

PLXDC2 (Plexin-domain containing 2), also named tumor endothelial marker 7-related protein (TEM7R), is a single-pass type I membrane protein with some homology to nidogen and to plexins. PLXDC2 is located in tumor endothelium and plays a role in tumor angiogenesis. Three isoforms of PLXDC2 produced by alternative splicing have been described. Recent finding revealed that PLXDC2 is a mitogen for neural progenitors and functions as a novel regulator of the development of different brain regions, suggesting its role in coordinating proliferation and differentiation in the developing nervous system.

Storage

Storage:

Store at -80°C.

Storage Buffer:

PBS Only

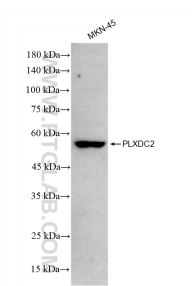
For technical support and original validation data for this product please contact:

T: 1 (888) 4PTGLAB (1-888-478-4522) (toll free in USA), or 1(312) 455-8498 (outside USA)

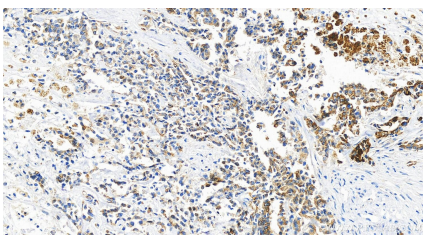
E: proteintech@ptglab.com
W: ptglab.com

This product is exclusively available under Proteintech Group brand and is not available to purchase from any other manufacturer.

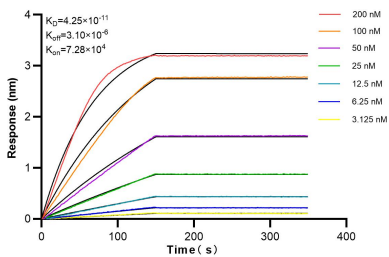
Selected Validation Data



MKN-45 cells were subjected to SDS PAGE followed by western blot with 83449-4-RR (PLXDC2 antibody) at dilution of 1:20000 incubated at room temperature for 1.5 hours. This data was developed using the same antibody clone with 83449-4-PBS in a different storage buffer formulation.



Immunohistochemical analysis of paraffin-embedded human intrahepatic cholangiocarcinoma tissue slide using 83449-4-RR (PLXDC2 antibody) at dilution of 1:800 (under 20x lens). Heat mediated antigen retrieval with Tris-EDTA buffer (pH 9.0). This data was developed using the same antibody clone with 83449-4-PBS in a different storage buffer formulation.



Biolayer interferometry (BLI) kinetic assays of 83449-4-RR against Human PLXDC2 were performed. The affinity constant is 42.5 pM.