

For Research Use Only

# PMS1 Recombinant antibody, PBS Only

Catalog Number: 83456-6-PBS



## Basic Information

<b>Catalog Number:</b> 83456-6-PBS	<b>GenBank Accession Number:</b> BC096331	<b>Purification Method:</b> Protein A purification
<b>Size:</b> 100ug , Concentration: 1 mg/ml by Nanodrop;	<b>GeneID (NCBI):</b> 5378	<b>CloneNo.:</b> 240408D9
<b>Source:</b> Rabbit	<b>UNIPROT ID:</b> P54277	
<b>Isotype:</b> IgG	<b>Full Name:</b> PMS1 postmeiotic segregation increased 1 (S. cerevisiae)	
<b>Immunogen Catalog Number:</b> AG28132	<b>Observed MW:</b> 106 kDa	

## Applications

**Tested Applications:**  
WB, IHC, IF/ICC, FC (Intra), ELISA

**Species Specificity:**  
human

## Background Information

PMS1 Homolog 1 is a member of the DNA mismatch repair enzymes (MMREs) which is to eliminate the mismatch of insertions and deletions as a consequence of DNA polymerase errors at DNA synthesis in eukaryotes. PMS1 and MLH1 could form a heterodimer MutLβ that belongs to MMREs (PMID:25619773). In the MMR system, the MutS complex recognizes the DNA mispairs firstly, and then the MLh1-Pms1 and other associated proteins such as PCNA, RFC, Exo1 were recruited, inducing Exonuclease 1 (Exo1)-dependent and -independent MMR pathways (PMID:24981171). Mutations in this gene cause hereditary nonpolyposis colorectal cancer (HNPCC), which is also known as Lynch syndrome. It was reported that PMS1 is a widely expressed protein and located in the nucleus. Alternative splicing allows for 4 isoforms of PMS1 protein.

## Storage

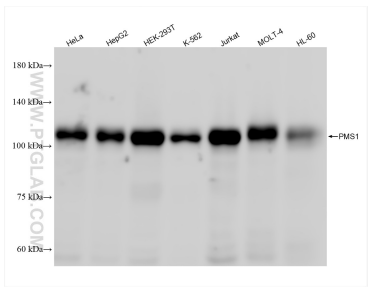
**Storage:**  
Store at -80°C.

**Storage Buffer:**  
PBS Only

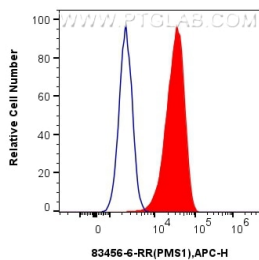
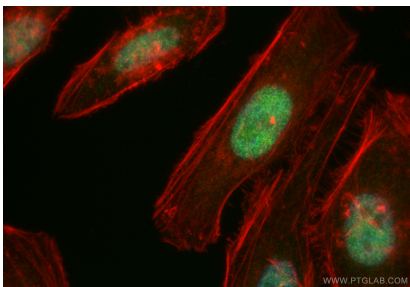
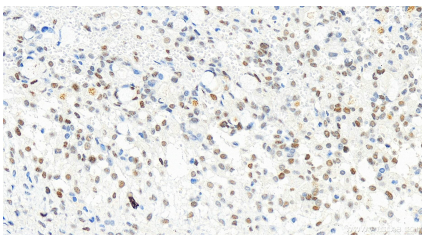
For technical support and original validation data for this product please contact:  
T: 1 (888) 4PTGLAB (1-888-478-4522) (toll free in USA), or 1(312) 455-8498 (outside USA)  
E: proteintech@ptglab.com  
W: ptglab.com

This product is exclusively available under Proteintech Group brand and is not available to purchase from any other manufacturer.

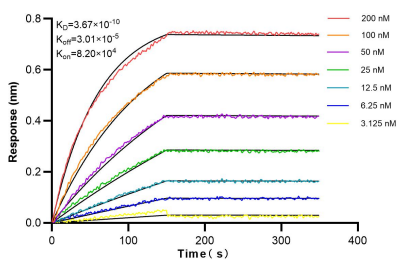
## Selected Validation Data



Various lysates were subjected to SDS PAGE followed by western blot with 83456-6-RR (PMS1 antibody) at dilution of 1:1000 incubated at room temperature for 1.5 hours. This data was developed using the same antibody clone with 83456-6-PBS in a different storage buffer formulation.



1x10<sup>6</sup> HeLa cells were intracellularly stained with 0.25 ug PMS1 Recombinant antibody (83456-6-RR, Clone:240408D9) and APC-Conjugated AffiniPure Goat Anti-Rabbit IgG(H+L)(red), or 0.25 ug Isotype Control (blue). Cells were fixed and permeabilized with Transcription Factor Staining Buffer Kit (PF00011). This data was developed using the same antibody clone with 83456-6-PBS in a different storage buffer formulation.



Biolayer interferometry (BLI) kinetic assays of 83456-6-RR against Human PMS1 were performed. The affinity constant is 0.367 nM.