

For Research Use Only

# RABL2B Recombinant antibody

Catalog Number: 83470-3-RR



## Basic Information

<b>Catalog Number:</b> 83470-3-RR	<b>GenBank Accession Number:</b> BC024281	<b>Purification Method:</b> Protein A purification
<b>Size:</b> 100ul , Concentration: 1000 ug/ml by Nanodrop;	<b>GeneID (NCBI):</b> 11158	<b>CloneNo.:</b> 240501D3
<b>Source:</b> Rabbit	<b>UNIPROT ID:</b> Q9UNT1	<b>Recommended Dilutions:</b> WB 1:2000-1:16000
<b>Isotype:</b> IgG	<b>Full Name:</b> RAB, member of RAS oncogene family-like 2B	
<b>Immunogen Catalog Number:</b> AG2189	<b>Calculated MW:</b> 229 aa, 26 kDa	
	<b>Observed MW:</b> 26 kDa	

## Applications

<b>Tested Applications:</b> WB, FC (Intra), ELISA	<b>Positive Controls:</b> WB : Jurkat cells, HepG2 cells
<b>Species Specificity:</b> human	

## Background Information

Rab-like protein 2B (RABL2B) is a member of a poorly characterised clade of the RAS GTPase superfamily, which plays an essential role in male fertility, sperm intraflagellar transport and tail assembly (PMID: 28553998, PMID: 28138870). A preferential expression of RABL2B in human tissues and lymphoblastoid cell lines was detected which is most pronounced in brain and placenta (PMID: 20138207).

## Storage

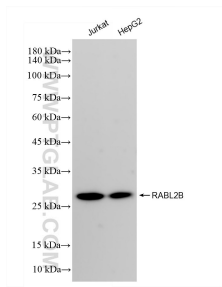
**Storage:**  
Store at -20°C. Stable for one year after shipment.  
**Storage Buffer:**  
PBS with 0.02% sodium azide and 50% glycerol pH 7.3.  
Aliquoting is unnecessary for -20°C storage

\*\*\* 20ul sizes contain 0.1% BSA

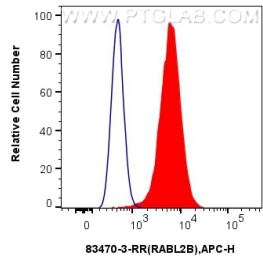
For technical support and original validation data for this product please contact:  
T: 1 (888) 4PTGLAB (1-888-478-4522) (toll free in USA), or 1(312) 455-8498 (outside USA)  
E: [proteintech@ptglab.com](mailto:proteintech@ptglab.com)  
W: [ptglab.com](http://ptglab.com)

This product is exclusively available under Proteintech Group brand and is not available to purchase from any other manufacturer.

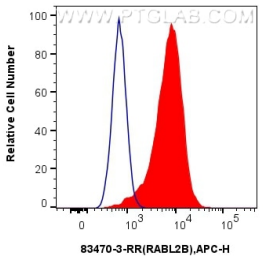
## Selected Validation Data



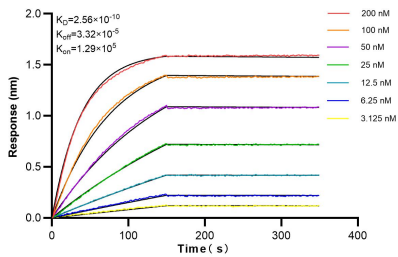
Various lysates were subjected to SDS PAGE followed by western blot with 83470-3-RR (RABL2B antibody) at dilution of 1:8000 incubated at room temperature for 1.5 hours.



1x10<sup>6</sup> A549 cells were intracellularly stained with 0.25 ug RABL2B Recombinant antibody (83470-3-RR, Clone:240501D3) and APC-Conjugated Goat Anti-Rabbit IgG(H+L)(red), or 0.25 ug Isotype Control (blue). Cells were fixed with 4% PFA and permeabilized with Flow Cytometry Perm Buffer (PF00011-C).



1x10<sup>6</sup> MCF-7 cells were intracellularly stained with 0.25 ug RABL2B Recombinant antibody (83470-3-RR, Clone:240501D3) and APC-Conjugated Goat Anti-Rabbit IgG(H+L)(red), or 0.25 ug Isotype Control (blue). Cells were fixed with 4% PFA and permeabilized with Flow Cytometry Perm Buffer (PF00011-C).



Biolayer interferometry (BLI) kinetic assays of 83470-3-RR against Human RABL2B were performed. The affinity constant is 0.256 nM.