

For Research Use Only

# RPP30 Recombinant antibody, PBS Only (Detector)

Catalog Number: 83481-5-PBS

Featured Product



## Basic Information

Catalog Number:

83481-5-PBS

Size:

100ug, Concentration: 1 mg/ml by Nanodrop;

Source:

Rabbit

Isotype:

IgG

Immunogen Catalog Number:

AG8600

GenBank Accession Number:

BC006991

GeneID (NCBI):

10556

UNIPROT ID:

P78346

Full Name:

ribonuclease P/MRP 30kDa subunit

Calculated MW:

268 aa, 29 kDa

Observed MW:

30 kDa

Purification Method:

Protein A purification

CloneNo.:

240468E4

## Applications

Tested Applications:

WB, IHC, IF/ICC, FC (Intra), Cytometric bead array, Sandwich ELISA, Indirect ELISA, Sample test

Species Specificity:

human, mouse

## Product Information

83481-5-PBS targets RPP30 as part of a matched antibody pair:

MP00472-1: 83481-2-PBS capture and 83481-5-PBS detection (validated in Cytometric bead array, Sandwich ELISA)

Unconjugated rabbit recombinant monoclonal antibody in PBS only (BSA and azide free) storage buffer at a concentration of 1 mg/mL, ready for conjugation. Created using Proteintech's proprietary in-house recombinant technology. Recombinant production enables unrivalled batch-to-batch consistency, easy scale-up, and future security of supply.

This conjugation ready format makes antibodies ideal for use in many applications including: ELISAs, multiplex assays requiring matched pairs, mass cytometry, and multiplex imaging applications. Antibody use should be optimized by the end user for each application and assay.

## Background Information

RPP30 is a part of multimeric ribonuclease P complex and ribonuclease MRP complex. It is also a component of the MRP ribonuclease complex, which cleaves pre-rRNA sequences.

## Storage

Storage:

Store at -80°C.

Storage Buffer:

PBS only, pH7.3

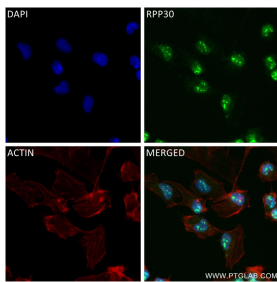
For technical support and original validation data for this product please contact:

T: 1 (888) 4PTGLAB (1-888-478-4522) (toll free in USA), or 1(312) 455-8498 (outside USA)

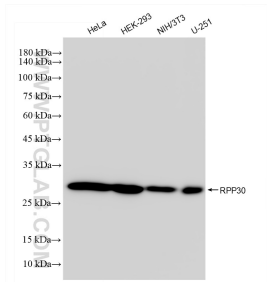
E: [proteintech@ptglab.com](mailto:proteintech@ptglab.com)  
W: [ptglab.com](http://ptglab.com)

This product is exclusively available under Proteintech Group brand and is not available to purchase from any other manufacturer.

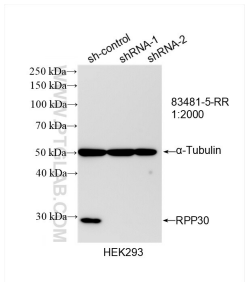
Selected Validation Data



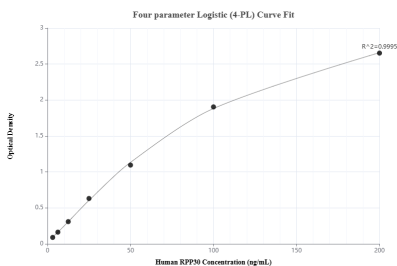
Immunofluorescent analysis of (4% PFA) fixed U-251 cells using RPP30 antibody (83481-5-RR, Clone: 240468E4 ) at dilution of 1:400 and CoraLite®488-Conjugated Goat Anti-Rabbit IgG(H+L) (SA00013-2), CL594-Phalloidin (red). This data was developed using the same antibody clone with 83481-5-PBS in a different storage buffer formulation.



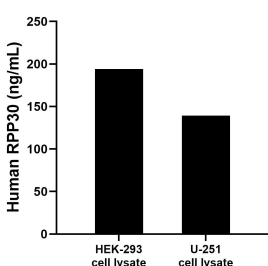
Various lysates were subjected to SDS PAGE followed by western blot with 83481-5-RR (RPP30 antibody) at dilution of 1:10000 incubated at room temperature for 1.5 hours. This data was developed using the same antibody clone with 83481-5-PBS in a different storage buffer formulation.



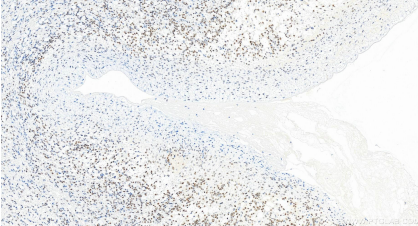
WB result of RPP30 antibody (83481-5-RR; 1:2000; incubated at room temperature for 1.5 hours) with sh-Control and sh-RPP30 transfected HEK-293 cells. This data was developed using the same antibody clone with 83481-5-PBS in a different storage buffer formulation.



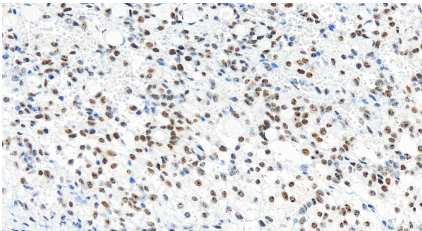
Sandwich ELISA standard curve of MP00472-1, Human RPP30 Recombinant Matched Antibody Pair - PBS only. 83481-2-PBS was coated to a plate as the capture antibody and incubated with serial dilutions of standard Ag8600. 83481-5-PBS was HRP conjugated as the detection antibody. Range: 3.13-200 ng/mL



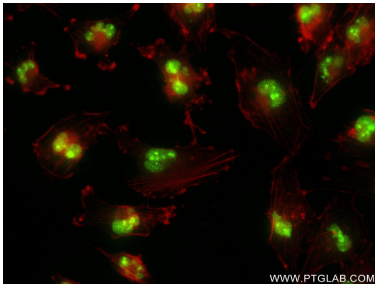
HEK-293 and U-251 cell lysate were measured. The human RPP30 concentration of detected samples was determined to be 194.20 ng/mL (based on a 1.2 mg/mL extract load) in HEK-293 cell lysate and 139.41 ng/mL (based on a 3.3 mg/mL extract load) in U-251 cell lysate.



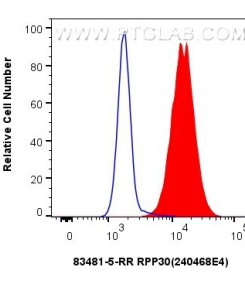
Immunohistochemical analysis of paraffin-embedded human ovary cancer tissue slide using 83481-5-RR (RPP30 antibody) at dilution of 1:1500 (under 20x lens). Heat mediated antigen retrieval with Tris-EDTA buffer (pH 9.0). This data was developed using the same antibody clone with 83481-5-PBS in a different storage buffer formulation.



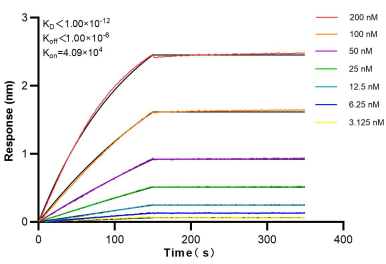
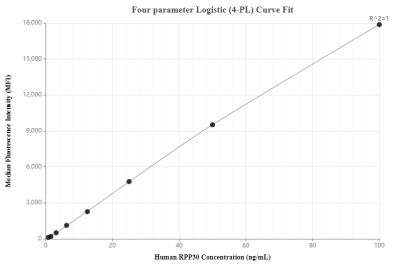
Immunohistochemical analysis of paraffin-embedded human ovary cancer tissue slide using 83481-5-RR (RPP30 antibody) at dilution of 1:1500 (under 20x lens). Heat mediated antigen retrieval with Tris-EDTA buffer (pH 9.0). This data was developed using the same antibody clone with 83481-5-PBS in a different storage buffer formulation.



Immunofluorescent analysis of (4% PFA) fixed U-251 cells using RPP30 antibody (83481-5-RR, Clone: 240468E4 ) at dilution of 1:400 and CoraLite®488-Conjugated AffiniPure Goat Anti-Rabbit IgG(H+L) (SA00013-2), CL594-Phalloidin (red). This data was developed using the same antibody clone with 83481-5-PBS in a different storage buffer formulation.



1x10<sup>6</sup> U-251 cells were intracellularly stained with 0.25 ug RPP30 Recombinant antibody (83481-5-RR, Clone:240468E4) and CoraLite®488-Conjugated Goat Anti-Rabbit IgG(H+L) (SA00013-2)(red), or 0.25 ug Rabbit IgG Isotype Control Recombinant Antibody (98136-1-RR, Clone: 240953C9) (blue). Cells were fixed and permeabilized with Transcription Factor Staining Buffer Kit (PF00011). This data was developed using the same antibody clone with 83481-5-PBS



Cytometric bead array standard curve of MP00472-1, RPP30 Recombinant Matched Antibody Pair, PBS Only. Capture antibody: 83481-2-PBS. Detection antibody: 83481-5-PBS. Standard: Ag8600. Range: 0.78-100 ng/mL.

Biolayer interferometry (BLI) kinetic assays of 83481-5-RR against Human RPP30 were performed. The affinity constant is below 1 pM.