

For Research Use Only

RPP30 Recombinant antibody

Catalog Number: 83481-5-RR

Featured Product



Basic Information

Catalog Number: 83481-5-RR	GenBank Accession Number: BC006991	Purification Method: Protein A purification
Size: 100ul , Concentration: 1000 ug/ml by Nanodrop;	GeneID (NCBI): 10556	CloneNo.: 240468E4
Source: Rabbit	UNIPROT ID: P78346	Recommended Dilutions: WB 1:5000-1:50000 IHC 1:750-1:3000 IF/ICC 1:200-1:800
Isotype: IgG	Full Name: ribonuclease P/MRP 30kDa subunit	
Immunogen Catalog Number: AG8600	Calculated MW: 268 aa, 29 kDa	
	Observed MW: 30 kDa	

Applications

Tested Applications: WB, IHC, IF/ICC, FC (Intra), ELISA	Positive Controls:
Species Specificity: human, mouse	WB : HeLa cells, HEK-293 cells, NIH/3T3 cells, U-251 cells
Note-IHC: suggested antigen retrieval with TE buffer pH 9.0; (*) Alternatively, antigen retrieval may be performed with citrate buffer pH 6.0	IHC : human ovary cancer tissue,
	IF/ICC : U-251 cells,

Background Information

RPP30 is a part of multimeric ribonuclease P complex and ribonuclease MRP complex. It is also a component of the MRP ribonuclease complex, which cleaves pre-rRNA sequences.

Storage

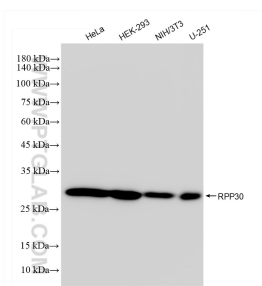
Storage:
Store at -20°C. Stable for one year after shipment.
Storage Buffer:
PBS with 0.02% sodium azide and 50% glycerol, pH7.3
Aliquoting is unnecessary for -20°C storage

*** 20ul sizes contain 0.1% BSA

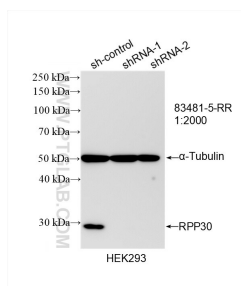
For technical support and original validation data for this product please contact:
T: 1 (888) 4PTGLAB (1-888-478-4522) (toll free in USA), or 1(312) 455-8498 (outside USA)
E: proteintech@ptglab.com
W: ptglab.com

This product is exclusively available under Proteintech Group brand and is not available to purchase from any other manufacturer.

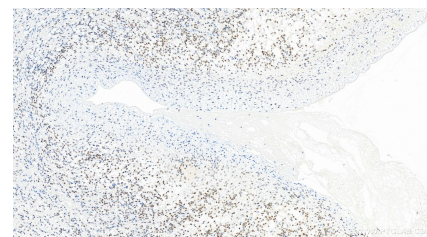
Selected Validation Data



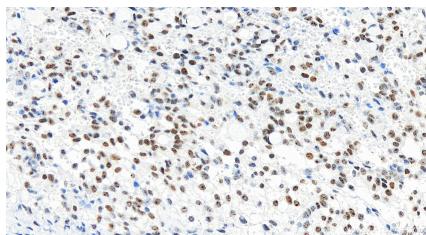
Various lysates were subjected to SDS PAGE followed by western blot with 83481-5-RR (RPP30 antibody) at dilution of 1:10000 incubated at room temperature for 1.5 hours.



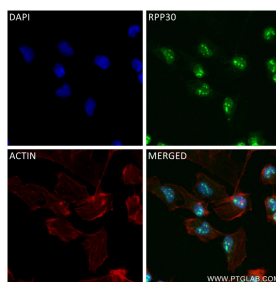
WB result of RPP30 antibody (83481-5-RR; 1:2000; incubated at room temperature for 1.5 hours) with sh-Control and sh-RPP30 transfected HEK-293 cells.



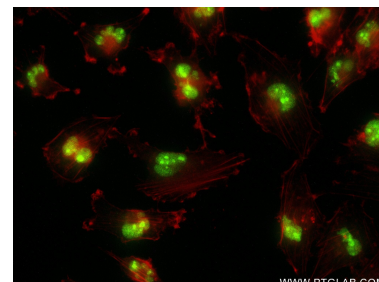
Immunohistochemical analysis of paraffin-embedded human ovary cancer tissue slide using 83481-5-RR (RPP30 antibody) at dilution of 1:1500 (under 20x lens). Heat mediated antigen retrieval with Tris-EDTA buffer (pH 9.0).



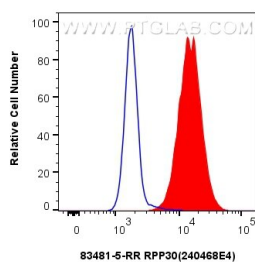
Immunohistochemical analysis of paraffin-embedded human ovary cancer tissue slide using 83481-5-RR (RPP30 antibody) at dilution of 1:1500 (under 20x lens). Heat mediated antigen retrieval with Tris-EDTA buffer (pH 9.0).



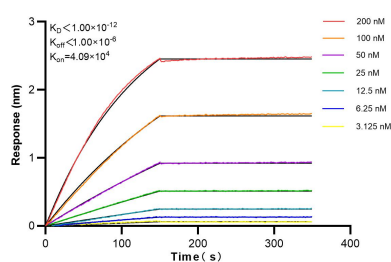
Immunofluorescent analysis of (4% PFA) fixed U-251 cells using RPP30 antibody (83481-5-RR, Clone: 240468E4) at dilution of 1:400 and CoraLite@488-Conjugated Goat Anti-Rabbit IgG(H+L) (SA00013-2), CL594-Phalloidin (red).



Immunofluorescent analysis of (4% PFA) fixed U-251 cells using RPP30 antibody (83481-5-RR, Clone: 240468E4) at dilution of 1:400 and CoraLite@488-Conjugated AffiniPure Goat Anti-Rabbit IgG(H+L) (SA00013-2), CL594-Phalloidin (red).



1x10⁶ U-251 cells were intracellularly stained with 0.25 μ g RPP30 Recombinant antibody (83481-5-RR, Clone:240468E4) and CoraLite@488-Conjugated Goat Anti-Rabbit IgG(H+L) (SA00013-2) (red), or 0.25 μ g Rabbit IgG Isotype Control Recombinant Antibody (98136-1-RR, Clone: 240953C9) (blue). Cells were fixed and permeabilized with Transcription Factor Staining Buffer Kit (PF00011).



Biolayer interferometry (BLI) kinetic assays of 83481-5-RR against Human RPP30 were performed. The affinity constant is below 1 pM.