

For Research Use Only

LAMR1/RPSA Recombinant antibody, PBS Only (Capture)

Catalog Number: 83495-1-PBS



Basic Information

Catalog Number: 83495-1-PBS	GenBank Accession Number: BC050688	Purification Method: Protein A purification
Size: 100ug , Concentration: 1 mg/ml by Nanodrop;	GeneID (NCBI): 3921	CloneNo.: 240461C6
Source: Rabbit	UNIPROT ID: P08865	
Isotype: IgG	Full Name: ribosomal protein SA	
Immunogen Catalog Number: AG6033	Calculated MW: 33 kDa	

Applications

Tested Applications:
Cytometric bead array, Sandwich ELISA, Indirect ELISA, Sample test

Species Specificity:
human

Product Information

83495-1-PBS targets LAMR1/RPSA as part of a matched antibody pair:

MP00494-1: 83495-1-PBS capture and 83495-4-PBS detection (validated in Cytometric bead array)

MP00494-4: 83495-1-PBS capture and 83495-6-PBS detection (validated in Sandwich ELISA)

Unconjugated rabbit recombinant monoclonal antibody in PBS only (BSA and azide free) storage buffer at a concentration of 1 mg/mL, ready for conjugation. Created using Proteintech's proprietary in-house recombinant technology. Recombinant production enables unrivalled batch-to-batch consistency, easy scale-up, and future security of supply.

This conjugation ready format makes antibodies ideal for use in many applications including: ELISAs, multiplex assays requiring matched pairs, mass cytometry, and multiplex imaging applications. Antibody use should be optimized by the end user for each application and assay.

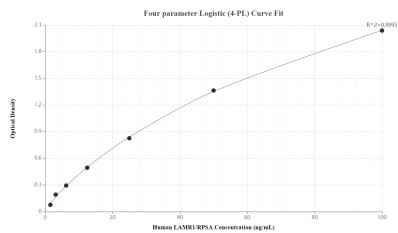
Storage

Storage:
Store at -80°C.
Storage Buffer:
PBS Only

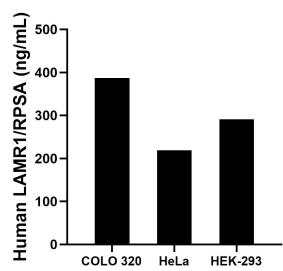
For technical support and original validation data for this product please contact:
T: 1 (888) 4PTGLAB (1-888-478-4522) (toll free in USA), or 1(312) 455-8498 (outside USA)
E: proteintech@ptglab.com
W: ptglab.com

This product is exclusively available under Proteintech Group brand and is not available to purchase from any other manufacturer.

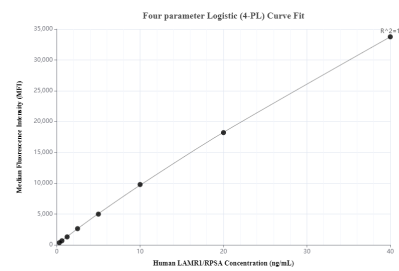
Selected Validation Data



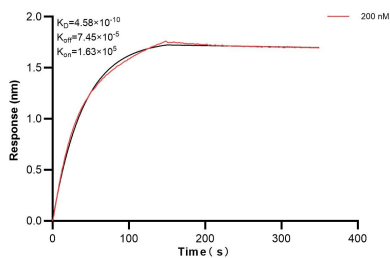
Sandwich ELISA standard curve of MP00494-4, Human LAMR1/RPSA Recombinant Matched Antibody Pair - PBS only. 83495-1-PBS was coated to a plate as the capture antibody and incubated with serial dilutions of standard Ag6033. 83495-6-PBS was HRP conjugated as the detection antibody. Range: 1.56-100 ng/mL.



The mean LAMR1/RPSA concentration was determined to be 387.00 ng/mL in COLO 320 cell extract based on a 2.00 mg/mL extract load, 218.85 ng/mL in HeLa cell extract based on a 1.20 mg/mL extract load and 291.26 ng/mL in HEK-293 cell extract based on a 1.20 mg/mL extract load.



Cytometric bead array standard curve of MP00494-1, LAMR1/RPSA Recombinant Matched Antibody Pair, PBS Only. Capture antibody: 83495-1-PBS. Detection antibody: 83495-4-PBS. Standard: Ag6033. Range: 0.313-40 ng/mL.



Biolayer interferometry (BLI) kinetic assay of 83495-1-PBS against Human LAMR1/RPSA was performed. The affinity constant is 0.458 nM.