

For Research Use Only

PDE6D Recombinant antibody

Catalog Number: 83503-1-RR

Featured Product



Basic Information

Catalog Number:

83503-1-RR

Size:

100ul, Concentration: 1000 ug/ml by Nanodrop;

Source:

Rabbit

Isotype:

IgG

Immunogen Catalog Number:

AG29563

GenBank Accession Number:

NM_002601

GeneID (NCBI):

5147

UNIPROT ID:

O43924

Full Name:

phosphodiesterase 6D, cGMP-specific, rod, delta

Calculated MW:

17 KDa

Observed MW:

14-17 kDa

Purification Method:

Protein A purification

CloneNo.:

230546H1

Recommended Dilutions:

WB 1:5000-1:50000

Applications

Tested Applications:

WB, ELISA

Species Specificity:

human, mouse, rat

Positive Controls:

WB : HeLa cells, HepG2 cells, Jurkat cells, T-47D cells, mouse brain tissue, rat brain tissue, human placenta tissue

Background Information

PDE6D, also known as PDED, belongs to the PDE6D/unc-119 family. PDE6D is a ubiquitously expressed prenyl-binding protein. By binding to prenyl moieties, PDE6D mediates the shuttling of prenylated proteins between membranes. Thereby, it regulates the membrane association of Ras and Rap GTPases (PMID: 36672247). In addition, research has shown that PDE6D is overexpressed in liver cancer and correlated with tumor stages, grading, and ERK activation (PMID: 30901922). The calculated molecular weight of PDE6D is 17 kDa.

Storage

Storage:

Store at -20°C. Stable for one year after shipment.

Storage Buffer:

PBS with 0.02% sodium azide and 50% glycerol pH 7.3.

Aliquoting is unnecessary for -20°C storage

*** 20ul sizes contain 0.1% BSA

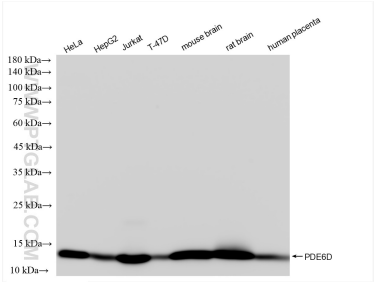
For technical support and original validation data for this product please contact:

T: 1 (888) 4PTGLAB (1-888-478-4522) (toll free in USA), or 1(312) 455-8498 (outside USA)

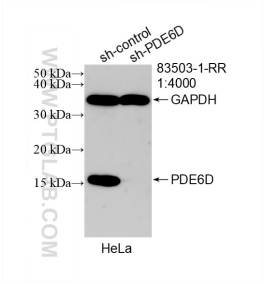
E: proteintech@ptglab.com
W: ptglab.com

This product is exclusively available under Proteintech Group brand and is not available to purchase from any other manufacturer.

Selected Validation Data



Various lysates were subjected to SDS PAGE followed by western blot with 83503-1-RR (PDE6D antibody) at dilution of 1:10000 incubated at room temperature for 1.5 hours.



WB result of PDE6D antibody (83503-1-RR; 1:4000; incubated at room temperature for 1.5 hours) with sh-Control and sh-PDE6D transfected HeLa cells.