

For Research Use Only

MED21 Recombinant antibody, PBS Only (Capture)

Catalog Number: 83510-1-PBS

Featured Product



Basic Information

Catalog Number: 83510-1-PBS	GenBank Accession Number: BC008380	Purification Method: Protein A purification
Size: 100ug, Concentration: 1 mg/ml by Nanodrop;	GeneID (NCBI): 9412	CloneNo.: 240419E2
Source: Rabbit	UNIPROT ID: Q13503	
Isotype: IgG	Full Name: mediator complex subunit 21	
Immunogen Catalog Number: AG8568	Calculated MW: 144 aa, 16 kDa	
	Observed MW: 13-16 kDa	

Applications

Tested Applications:
WB, FC (Intra), Cytometric bead array, Indirect ELISA

Species Specificity:
human

Product Information

83510-1-PBS targets MED21 as part of a matched antibody pair:

MP00506-1: 83510-1-PBS capture and 83510-2-PBS detection (validated in Cytometric bead array)

Unconjugated rabbit recombinant monoclonal antibody in PBS only (BSA and azide free) storage buffer at a concentration of 1 mg/mL, ready for conjugation. Created using Proteintech's proprietary in-house recombinant technology. Recombinant production enables unrivalled batch-to-batch consistency, easy scale-up, and future security of supply.

This conjugation ready format makes antibodies ideal for use in many applications including: ELISAs, multiplex assays requiring matched pairs, mass cytometry, and multiplex imaging applications. Antibody use should be optimized by the end user for each application and assay.

Background Information

MED21, also known as SRB7 and SURB7, belongs to the Mediator complex subunit 21 family. MED21 is a small essential subunit of the middle domain of the Mediator, which is conserved in all eukaryotes. MED21 is thought to play an important role in transcriptional activation and repression. MED21 regulates the transcription of nearly all RNA polymerase II-dependent genes (PMID: 16758199, PMID: 30559736).

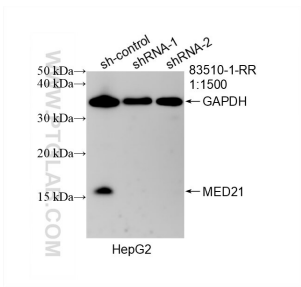
Storage

Storage:
Store at -80°C.
Storage Buffer:
PBS Only

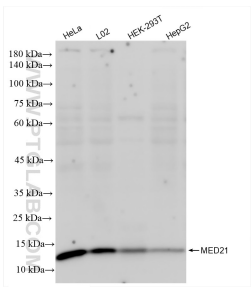
For technical support and original validation data for this product please contact:
T: 1 (888) 4PTGLAB (1-888-478-4522) (toll free in USA), or 1(312) 455-8498 (outside USA)
E: proteintech@ptglab.com
W: ptglab.com

This product is exclusively available under Proteintech Group brand and is not available to purchase from any other manufacturer.

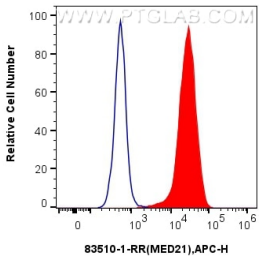
Selected Validation Data



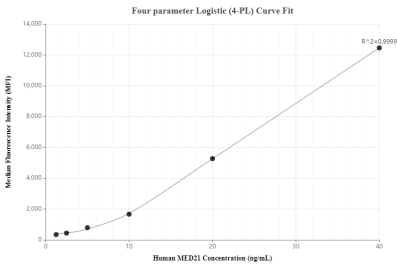
WB result of MED21 antibody (83510-1-RR; 1:1500; incubated at room temperature for 1.5 hours) with sh-Control and sh-MED21 transfected HepG2 cells. This data was developed using the same antibody clone with 83510-1-PBS in a different storage buffer formulation.



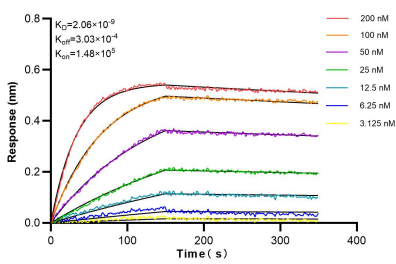
Various lysates were subjected to SDS PAGE followed by western blot with 83510-1-RR (MED21 antibody) at dilution of 1:5000 incubated at room temperature for 1.5 hours. This data was developed using the same antibody clone with 83510-1-PBS in a different storage buffer formulation.



1x10⁶ HeLa cells were intracellularly stained with 0.25 ug MED21 Recombinant antibody (83510-1-RR, Clone:240419E2) and APC-Conjugated AffiniPure Goat Anti-Rabbit IgG(H+L)(red), or 0.25 ug Isotype Control (blue). Cells were fixed and permeabilized with Transcription Factor Staining Buffer Kit (PF00011). This data was developed using the same antibody clone with 83510-1-PBS in a different storage buffer formulation.



Cytometric bead array standard curve of MP00506-1, MED21 Recombinant Matched Antibody Pair, PBS Only. Capture antibody: 83510-1-PBS. Detection antibody: 83510-2-PBS. Standard: Ag8568. Range: 1.25-40 ng/mL.



Biolayer interferometry (BLI) kinetic assays of 83510-1-RR against Human MED21 were performed. The affinity constant is 2.06 nM.