

For Research Use Only

GPR105 Recombinant antibody

Catalog Number: 83511-1-RR



Basic Information

Catalog Number:

83511-1-RR

Size:

100ul , Concentration: 1000 ug/ml by Nanodrop;

Source:

Rabbit

Isotype:

IgG

Immunogen Catalog Number:

AG14105

GenBank Accession Number:

BC034989

GeneID (NCBI):

9934

UNIPROT ID:

Q15391

Full Name:

purinergic receptor P2Y, G-protein coupled, 14

Calculated MW:

338 aa, 39 kDa

Observed MW:

40 kDa

Purification Method:

Protein A purification

CloneNo.:

240498B10

Recommended Dilutions:

WB 1:200-1:1000

Applications

Tested Applications:

WB, ELISA

Species Specificity:

human, mouse

Positive Controls:

WB : Jurkat cells, K-562 cells, MCF-7 cells, human placenta tissue, mouse lung tissue

Background Information

GPR105 (P2RY14) is widely expressed throughout many brain regions and peripheral tissues of humans and rodents, and couples to a pertussis toxin-sensitive G protein (PMID: 14559350). GPR105 is also prominently expressed in immune cells, including macrophages, lymphocytes, and neutrophils (PMID: 22778393).

Storage

Storage:

Store at -20°C. Stable for one year after shipment.

Storage Buffer:

PBS with 0.02% sodium azide and 50% glycerol pH 7.3.

Aliquoting is unnecessary for -20°C storage

*** 20ul sizes contain 0.1% BSA

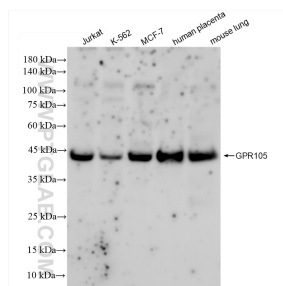
For technical support and original validation data for this product please contact:

T: 1 (888) 4PTGLAB (1-888-478-4522) (toll free in USA), or 1(312) 455-8498 (outside USA)

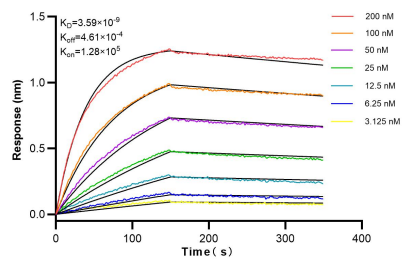
E: proteintech@ptglab.com
W: ptglab.com

This product is exclusively available under Proteintech Group brand and is not available to purchase from any other manufacturer.

Selected Validation Data



Various lysates were subjected to SDS PAGE followed by western blot with 83511-1-RR (GPR105 antibody) at dilution of 1:300 incubated at room temperature for 1.5 hours.



Biolayer interferometry (BLI) kinetic assays of 83511-1-RR against Human GPR105 were performed. The affinity constant is 3.59 nM.