

For Research Use Only

Integrin beta-5 Recombinant antibody, PBS Only (Detector)

Catalog Number: 83514-1-PBS



Basic Information

Catalog Number: 83514-1-PBS	GenBank Accession Number: BC006541	Purification Method: Protein A purification
Size: 100ug , Concentration: 1 mg/ml by Nanodrop;	GeneID (NCBI): 3693	CloneNo.: 240401C12
Source: Rabbit	UNIPROT ID: P18084	
Isotype: IgG	Full Name: integrin, beta 5	
Immunogen Catalog Number: AG29783	Calculated MW: 88 kDa	

Applications

Tested Applications:
Cytometric bead array, Sandwich ELISA, Indirect ELISA, Sample test

Species Specificity:
human

Product Information

83514-1-PBS targets Integrin beta-5 as part of a matched antibody pair:

MP00512-3: 83514-4-PBS capture and 83514-1-PBS detection (validated in Cytometric bead array)

MP00512-4: 83514-3-PBS capture and 83514-1-PBS detection (validated in Sandwich ELISA)

Unconjugated rabbit recombinant monoclonal antibody in PBS only (BSA and azide free) storage buffer at a concentration of 1 mg/mL, ready for conjugation. Created using Proteintech's proprietary in-house recombinant technology. Recombinant production enables unrivalled batch-to-batch consistency, easy scale-up, and future security of supply.

This conjugation ready format makes antibodies ideal for use in many applications including: ELISAs, multiplex assays requiring matched pairs, mass cytometry, and multiplex imaging applications. Antibody use should be optimized by the end user for each application and assay.

Storage

Storage:
Store at -80°C.
Storage Buffer:
PBS Only

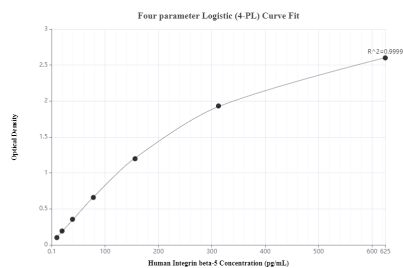
For technical support and original validation data for this product please contact:

T: 1 (888) 4PTGLAB (1-888-478-4522) (toll free in USA), or 1(312) 455-8498 (outside USA)

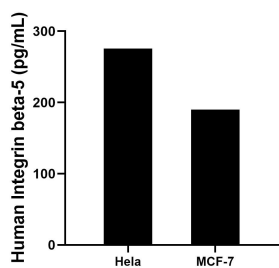
E: proteintech@ptglab.com
W: ptglab.com

This product is exclusively available under Proteintech Group brand and is not available to purchase from any other manufacturer.

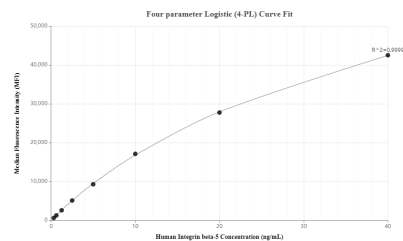
Selected Validation Data



Sandwich ELISA standard curve of MP00512-4, Integrin Beta 5 Recombinant Matched Antibody Pair - PBS only. 83514-3-PBS was coated to a plate as the capture antibody and incubated with serial dilutions of standard Ag29783.83514-1-PBS was HRP conjugated as the detection antibody. Range: 9.766-625 pg/mL



The mean Integrin Beta 5 concentration was determined to be 275.71 pg/mL in HeLa cell extract based on a 2.8 mg/mL extract load and 190.06 pg/mL in MCF-7 cell extract based on a 3.1 mg/mL extract load.



Cytometric bead array standard curve of MP00512-3, Integrin Beta 5 Recombinant Matched Antibody Pair, PBS Only. Capture antibody: 83514-4-PBS. Detection antibody: 83514-1-PBS. Standard: Ag29783. Range: 0.313-40 ng/mL