

For Research Use Only

Mouse PD-1/CD279 Recombinant antibody, PBS Only (Capture)

Catalog Number: 83516-4-PBS



Basic Information

Catalog Number: 83516-4-PBS	GenBank Accession Number: NM_008798.2	Purification Method: Protein A purification
Size: 100ug , Concentration: 1 mg/ml by Nanodrop;	GeneID (NCBI): 18566	CloneNo.: 240390D5
Source: Rabbit	UNIPROT ID: Q02242	
Isotype: IgG	Full Name: programmed cell death 1	
	Calculated MW: 32 kDa	

Applications

Tested Applications:
Cytometric bead array, Sandwich ELISA, Indirect ELISA, Sample test

Species Specificity:
mouse

Product Information

83516-4-PBS targets PD-1/CD279 as part of a matched antibody pair:

MP00496-1: 83516-4-PBS capture and 83516-5-PBS detection (validated in Cytometric bead array)

MP00496-4: 83516-4-PBS capture and 83516-9-PBS detection (validated in Sandwich ELISA)

Unconjugated rabbit recombinant monoclonal antibody in PBS only (BSA and azide free) storage buffer at a concentration of 1 mg/mL, ready for conjugation. Created using Proteintech's proprietary in-house recombinant technology. Recombinant production enables unrivalled batch-to-batch consistency, easy scale-up, and future security of supply.

This conjugation ready format makes antibodies ideal for use in many applications including: ELISAs, multiplex assays requiring matched pairs, mass cytometry, and multiplex imaging applications. Antibody use should be optimized by the end user for each application and assay.

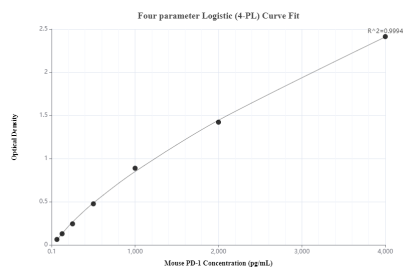
Storage

Storage:
Store at -80°C.
Storage Buffer:
PBS Only

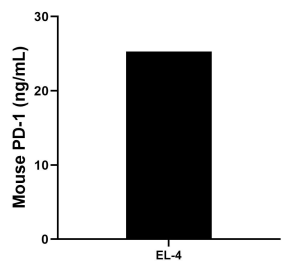
For technical support and original validation data for this product please contact:
T: 1 (888) 4PTGLAB (1-888-478-4522) (toll free in USA), or 1(312) 455-8498 (outside USA)
E: proteintech@ptglab.com
W: ptglab.com

This product is exclusively available under Proteintech Group brand and is not available to purchase from any other manufacturer.

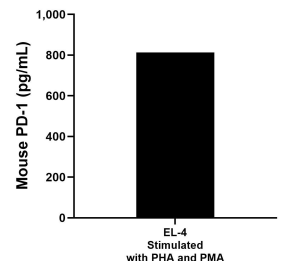
Selected Validation Data



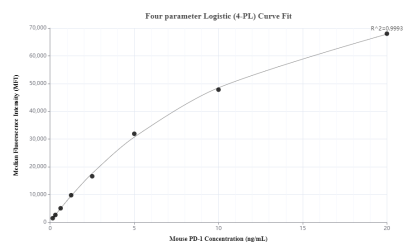
Sandwich ELISA standard curve of MP00496-4, Mouse PD-1/CD279 Monoclonal Matched Antibody Pair - PBS only. 83516-4-PBS was coated to a plate as the capture antibody and incubated with serial dilutions of standard Eg0918. 83516-9-PBS was HRP conjugated as the detection antibody. Range: 62.5-4000 pg/mL



The mean mouse PD-1/CD279 concentration was determined to be 14.08 ng/mL in EL-4 cell extract based on a 3.0 mg/mL extract load.



EL-4 was cultured in RPMI 1640 supplemented with 10% fetal bovine serum, 50 μ M β -mercaptoethanol, 2 mM L-glutamine, and 100 μ g/mL of streptomycin sulfate. The cells were stimulated with 10 μ g/mL of PHA and 10 ng/mL of PMA. An aliquot of the cell culture supernatant was removed, assayed for mouse PD-1/CD279 and measured 812.8 pg/mL.



Cytometric bead array standard curve of MP00496-1, MOUSE PD-1/CD279 Recombinant Matched Antibody Pair, PBS Only. Capture antibody: 83516-4-PBS. Detection antibody: 83516-5-PBS. Standard: Eg0918. Range: 0.156-20 ng/mL