

For Research Use Only

RPS11 Recombinant antibody, PBS Only (Detector)

Catalog Number: 83517-4-PBS



Basic Information

| | | |
|---|--|---|
| Catalog Number: 83517-4-PBS | GenBank Accession Number: BC007945 | Purification Method: Protein A purification |
| Size: 100ug , Concentration: 1 mg/ml by Nanodrop; | GeneID (NCBI): 6205 | CloneNo.: 240327G11 |
| Source: Rabbit | UNIPROT ID: P62280 | |
| Isotype: IgG | Full Name: ribosomal protein S11 | |
| Immunogen Catalog Number: AG34848 | Calculated MW: 158 aa, 18 kDa | |

Applications

Tested Applications:
Sandwich ELISA, Indirect ELISA, Sample test

Species Specificity:
human

Product Information

83517-4-PBS targets RPS11 as part of a matched antibody pair:

MP00515-2: 83517-2-PBS capture and 83517-4-PBS detection (validated in Sandwich ELISA)

Unconjugated rabbit recombinant monoclonal antibody in PBS only (BSA and azide free) storage buffer at a concentration of 1 mg/mL, ready for conjugation. Created using Proteintech's proprietary in-house recombinant technology. Recombinant production enables unrivalled batch-to-batch consistency, easy scale-up, and future security of supply.

This conjugation ready format makes antibodies ideal for use in many applications including: ELISAs, multiplex assays requiring matched pairs, mass cytometry, and multiplex imaging applications. Antibody use should be optimized by the end user for each application and assay.

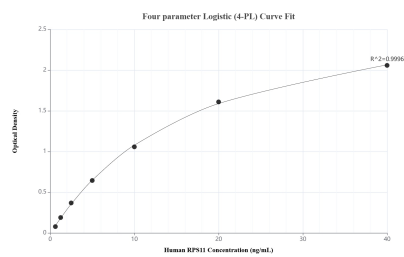
Storage

Storage:
Store at -80°C.
Storage Buffer:
PBS only, pH7.3

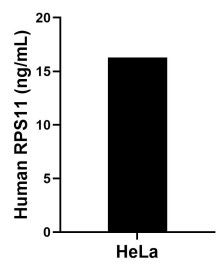
For technical support and original validation data for this product please contact:
T: 1 (888) 4PTGLAB (1-888-478-4522) (toll free in USA), or 1(312) 455-8498 (outside USA)
E: proteintech@ptglab.com
W: ptglab.com

This product is exclusively available under Proteintech Group brand and is not available to purchase from any other manufacturer.

Selected Validation Data



Sandwich ELISA standard curve of MP00515-2, Human RPS11 Recombinant Matched Antibody Pair - PBS only. 83517-2-PBS was coated to a plate as the capture antibody and incubated with serial dilutions of standard Ag34848. 83517-4-PBS was HRP conjugated as the detection antibody. Range: 0.625-40 ng/mL



The mean RPS11 concentration was determined to be 16.30 ng/mL in HeLa cell extract based on a 2.90 mg/mL extract load.