

For Research Use Only

SOD2 Recombinant antibody

Catalog Number: 83519-2-RR



Basic Information

Catalog Number: 83519-2-RR	GenBank Accession Number: BC016934	Purification Method: Protein A purification
Size: 100ul , Concentration: 1000 ug/ml by Nanodrop;	GeneID (NCBI): 6648	CloneNo.: 240462F8
Source: Rabbit	UNIPROT ID: P04179	Recommended Dilutions: IF/ICC 1:125-1:500
Isotype: IgG	Full Name: superoxide dismutase 2, mitochondrial	
Immunogen Catalog Number: AG21388	Calculated MW: 25 kDa	

Applications

Tested Applications: IF/ICC, FC (Intra), ELISA	Positive Controls: IF/ICC : HeLa cells, HepG2 cells
Species Specificity: human	

Background Information

SOD2(superoxide dismutase 2, mitochondrial) is also named as IPOB, MNSOD, SODM, Mn-SOD and belongs to the iron/manganese superoxide dismutase family. It is a marker of mitochondria, which is restricted to the perinuclear area in a cell with aggregate formation of mutant SOD1(PMID:12659845). It functions as the first line of antioxidant defense against highly reactive superoxide radicals and it appears to be early predictors for survival in septic patients with MIF(PMID:20863520). It has 2 isoforms with the molecular weight of 25 kDa and 21 kDa. This antibody is specific to SOD2.

Storage

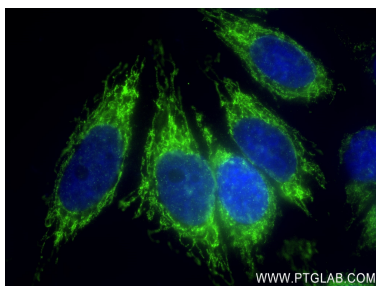
Storage:
Store at -20°C. Stable for one year after shipment.
Storage Buffer:
PBS with 0.02% sodium azide and 50% glycerol pH 7.3.
Aliquoting is unnecessary for -20°C storage

*** 20ul sizes contain 0.1% BSA

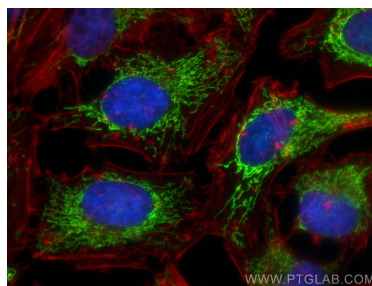
For technical support and original validation data for this product please contact:
T: 1 (888) 4PTGLAB (1-888-478-4522) (toll free in USA), or 1(312) 455-8498 (outside USA)
E: proteintech@ptglab.com
W: ptglab.com

This product is exclusively available under Proteintech Group brand and is not available to purchase from any other manufacturer.

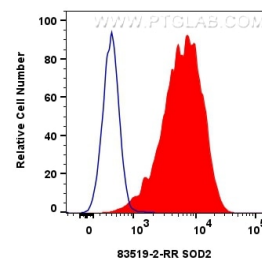
Selected Validation Data



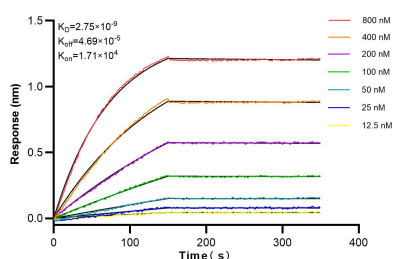
Immunofluorescent analysis of (4% PFA) fixed HepG2 cells using SOD2 antibody (83519-2-RR, Clone: 240462F8) at dilution of 1:250 and CoraLite®488-Conjugated AffiniPure Goat Anti-Rabbit IgG(H+L) (SA00013-2).



Immunofluorescent analysis of (4% PFA) fixed HeLa cells using SOD2 antibody (83519-2-RR, Clone: 240462F8) at dilution of 1:250 and Multi-rAb CoraLite® Plus 488-Goat Anti-Rabbit Recombinant Secondary Antibody (H+L) (RGAR002), CL594-phalloidin (red).



1×10^6 HeLa cells were intracellularly stained with 0.25 μ g SOD2 Recombinant antibody (83519-2-RR, Clone: 240462F8) and CoraLite®488-Conjugated Goat Anti-Rabbit IgG(H+L) (SA00013-2)(red), or 0.25 μ g Control Antibody (blue). Cells were fixed with 4% PFA and permeabilized with Flow Cytometry Perm Buffer (PF00011-C).



Biolayer interferometry (BLI) kinetic assays of 83519-2-RR against Human SOD2 were performed. The affinity constant is 2.75 nM.