

For Research Use Only

SMPD2 Recombinant antibody, PBS Only (Detector)



Catalog Number: 83520-3-PBS

Basic Information

Catalog Number: 83520-3-PBS	GenBank Accession Number: BC000038	Purification Method: Protein A purification
Size: 100ug , Concentration: 1 mg/ml by Nanodrop;	GeneID (NCBI): 6610	CloneNo.: 240400B5
Source: Rabbit	UNIPROT ID: O60906	
Isotype: IgG	Full Name: sphingomyelin phosphodiesterase 2, neutral membrane (neutral sphingomyelinase)	
Immunogen Catalog Number: AG7367	Calculated MW: 48 kDa	

Applications

Tested Applications:
WB, Cytometric bead array, Indirect ELISA

Species Specificity:
human

Product Information

83520-3-PBS targets SMPD2 as part of a matched antibody pair:

MP00518-1: 83520-1-PBS capture and 83520-3-PBS detection (validated in Cytometric bead array)

Unconjugated rabbit recombinant monoclonal antibody in PBS only (BSA and azide free) storage buffer at a concentration of 1 mg/mL, ready for conjugation. Created using Proteintech's proprietary in-house recombinant technology. Recombinant production enables unrivalled batch-to-batch consistency, easy scale-up, and future security of supply.

This conjugation ready format makes antibodies ideal for use in many applications including: ELISAs, multiplex assays requiring matched pairs, mass cytometry, and multiplex imaging applications. Antibody use should be optimized by the end user for each application and assay.

Storage

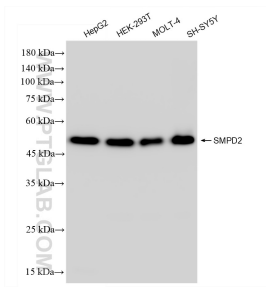
Storage:
Store at -80°C.

Storage Buffer:
PBS Only

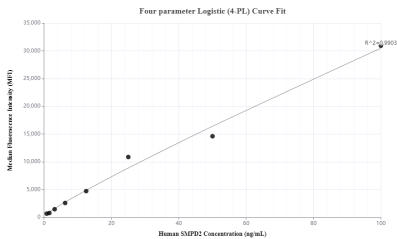
For technical support and original validation data for this product please contact:
T: 1 (888) 4PTGLAB (1-888-478-4522) (toll free in USA), or 1(312) 455-8498 (outside USA)
E: proteintech@ptglab.com
W: ptglab.com

This product is exclusively available under Proteintech Group brand and is not available to purchase from any other manufacturer.

Selected Validation Data



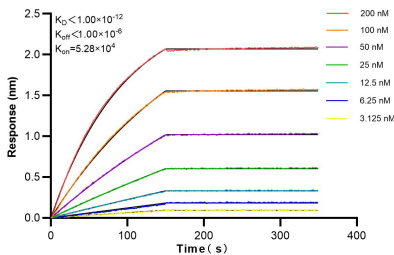
Various lysates were subjected to SDS PAGE followed by western blot with 83520-3-RR (SMPD2 antibody) at dilution of 1:10000 incubated at room temperature for 1.5 hours. This data was developed using the same antibody clone with 83520-3-PBS in a different storage buffer formulation.



Cytometric bead array standard curve of MP00518-1, SMPD2 Recombinant Matched Antibody Pair, PBS Only. Capture antibody: 83520-1-PBS. Detection antibody: 83520-3-PBS. Standard: Ag7367. Range: 0.78-100 ng/mL

1x10⁶ U2OS cells were intracellularly stained with 0.25 ug SMPD2 Recombinant antibody (83520-3-RR, Clone:240400B5) and APC-Conjugated AffiniPure Goat Anti-Rabbit IgG(H+L)(red), or 0.25 ug Isotype Control (blue). Cells were fixed with 4% PFA and permeabilized with Flow Cytometry Perm Buffer (PF00011-C). This data was developed using the same antibody clone with 83520-3-PBS in a different storage buffer formulation.

1x10⁶ HeLa cells were intracellularly stained with 0.25 ug SMPD2 Recombinant antibody (83520-3-RR, Clone:240400B5) and APC-Conjugated AffiniPure Goat Anti-Rabbit IgG(H+L)(red), or 0.25 ug Isotype Control (blue). Cells were fixed with 4% PFA and permeabilized with Flow Cytometry Perm Buffer (PF00011-C). This data was developed using the same antibody clone with 83520-3-PBS in a different storage buffer formulation.



Biolayer interferometry (BLI) kinetic assays of 83520-3-RR against Human SMPD2 were performed. The affinity constant is below 1 pM.