

For Research Use Only

# PSMD1 Recombinant antibody, PBS Only (Detector)

Catalog Number: 83521-4-PBS



## Basic Information

<b>Catalog Number:</b> 83521-4-PBS	<b>GenBank Accession Number:</b> BC094720	<b>Purification Method:</b> Protein A purification
<b>Size:</b> 100ug , Concentration: 1 mg/ml by Nanodrop;	<b>GeneID (NCBI):</b> 5707	<b>CloneNo.:</b> 240458C9
<b>Source:</b> Rabbit	<b>UNIPROT ID:</b> Q99460	
<b>Isotype:</b> IgG	<b>Full Name:</b> proteasome (prosome, macropain) 26S subunit, non-ATPase, 1	
<b>Immunogen Catalog Number:</b> AG12009	<b>Calculated MW:</b> 953 aa, 106 kDa	
	<b>Observed MW:</b> 106 kDa	

## Applications

**Tested Applications:**  
WB, IHC, IF/ICC, FC (Intra), Cytometric bead array, Indirect ELISA

**Species Specificity:**  
human, mouse, rat

## Product Information

83521-4-PBS targets PSMD1 as part of a matched antibody pair.

MP00519-2: 83521-3-PBS capture and 83521-4-PBS detection (validated in Cytometric bead array)

Unconjugated rabbit recombinant monoclonal antibody in PBS only (BSA and azide free) storage buffer at a concentration of 1 mg/mL, ready for conjugation. Created using Proteintech's proprietary in-house recombinant technology. Recombinant production enables unrivalled batch-to-batch consistency, easy scale-up, and future security of supply.

This conjugation ready format makes antibodies ideal for use in many applications including: ELISAs, multiplex assays requiring matched pairs, mass cytometry, and multiplex imaging applications. Antibody use should be optimized by the end user for each application and assay.

## Background Information

PSMD1 is a component of the 26S proteasome and contributes to its function regulation. PSMD1 performs an important role in the regulation of numerous cellular processes through the degradation of proteins targeted for breakdown through ubiquitin. PSMD1 has been found to be closely related to a variety of cancers such as lung adenocarcinoma and breast cancer.

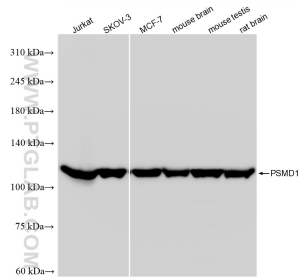
## Storage

**Storage:**  
Store at -80°C.  
**Storage Buffer:**  
PBS Only

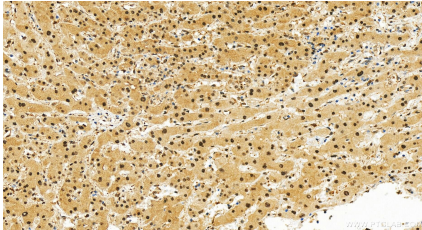
For technical support and original validation data for this product please contact:  
T: 1 (888) 4PTGLAB (1-888-478-4522) (toll free in USA), or 1(312) 455-8498 (outside USA)  
E: [proteintech@ptglab.com](mailto:proteintech@ptglab.com)  
W: [ptglab.com](http://ptglab.com)

This product is exclusively available under Proteintech Group brand and is not available to purchase from any other manufacturer.

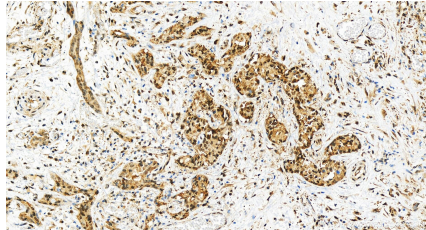
Selected Validation Data



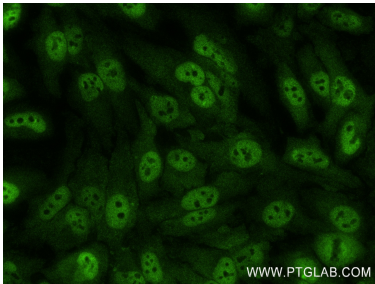
Various lysates were subjected to SDS PAGE followed by western blot with 83521-4-RR (PSMD1 antibody) at dilution of 1:10000 incubated at room temperature for 1.5 hours. This data was developed using the same antibody clone with 83521-4-PBS in a different storage buffer formulation.



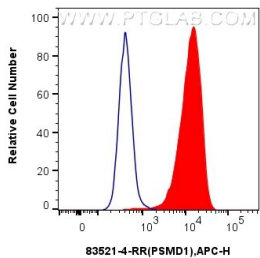
Immunohistochemical analysis of paraffin-embedded human intrahepatic cholangiocarcinoma tissue slide using 83521-4-RR (PSMD1 antibody) at dilution of 1:200 (under 20x lens). Heat mediated antigen retrieval with Tris-EDTA buffer (pH 9.0). This data was developed using the same antibody clone with 83521-4-PBS in a different storage buffer formulation.



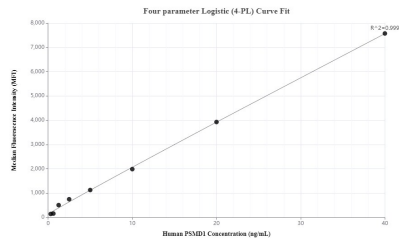
Immunohistochemical analysis of paraffin-embedded human intrahepatic cholangiocarcinoma tissue slide using 83521-4-RR (PSMD1 antibody) at dilution of 1:200 (under 20x lens). Heat mediated antigen retrieval with Tris-EDTA buffer (pH 9.0). This data was developed using the same antibody clone with 83521-4-PBS in a different storage buffer formulation.



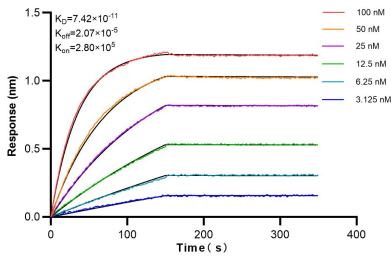
Immunofluorescent analysis of (4% PFA) fixed HeLa cells using PSMD1 antibody (83521-4-RR, Clone: 240458C9) at dilution of 1:300 and CoraLite®488-Conjugated AffiniPure Goat Anti-Rabbit IgG(H+L) (SA00013-2). This data was developed using the same antibody clone with 83521-4-PBS in a different storage buffer formulation.



1x10<sup>6</sup> MCF-7 cells were intracellularly stained with 0.25 ug PSMD1 Recombinant antibody (83521-4-RR, Clone:240458C9) and APC-Conjugated AffiniPure Goat Anti-Rabbit IgG(H+L)(red), or 0.25 ug Isotype Control (blue). Cells were fixed and permeabilized with Transcription Factor Staining Buffer Kit (PF00011). This data was developed using the same antibody clone with 83521-4-PBS in a different storage buffer formulation.



Cytometric bead array standard curve of MP00519-2, PSMD1 Recombinant Matched Antibody Pair, PBS Only. Capture antibody: 83521-3-PBS. Detection antibody: 83521-4-PBS. Standard: Ag12009. Range: 0.313-40 ng/mL.



Biolayer interferometry (BLI) kinetic assays of 83521-4-RR against Human PSMD1 were performed. The affinity constant is 74.2 pM.