

For Research Use Only

# PSMD1 Recombinant antibody, PBS Only (Detector)

Catalog Number: 83521-5-PBS



## Basic Information

<b>Catalog Number:</b> 83521-5-PBS	<b>GenBank Accession Number:</b> BC094720	<b>Purification Method:</b> Protein A purification
<b>Size:</b> 100ug , Concentration: 1 mg/ml by Nanodrop;	<b>GeneID (NCBI):</b> 5707	<b>CloneNo.:</b> 240458C4
<b>Source:</b> Rabbit	<b>UNIPROT ID:</b> Q99460	
<b>Isotype:</b> IgG	<b>Full Name:</b> proteasome (prosome, macropain) 26S subunit, non-ATPase, 1	
<b>Immunogen Catalog Number:</b> AG12009	<b>Calculated MW:</b> 953 aa, 106 kDa	

## Applications

**Tested Applications:**  
Sandwich ELISA, Indirect ELISA, Sample test

**Species Specificity:**  
human

## Product Information

83521-5-PBS targets PSMD1 as part of a matched antibody pair:

MP00519-3: 83521-2-PBS capture and 83521-5-PBS detection (validated in Sandwich ELISA)

Unconjugated rabbit recombinant monoclonal antibody in PBS only (BSA and azide free) storage buffer at a concentration of 1 mg/mL, ready for conjugation. Created using Proteintech's proprietary in-house recombinant technology. Recombinant production enables unrivalled batch-to-batch consistency, easy scale-up, and future security of supply.

This conjugation ready format makes antibodies ideal for use in many applications including: ELISAs, multiplex assays requiring matched pairs, mass cytometry, and multiplex imaging applications. Antibody use should be optimized by the end user for each application and assay.

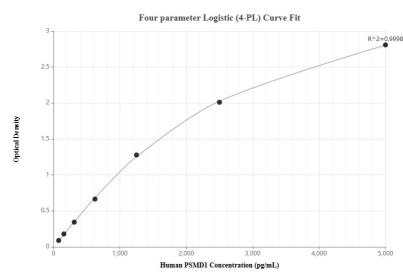
## Storage

**Storage:**  
Store at -80°C.  
**Storage Buffer:**  
PBS Only

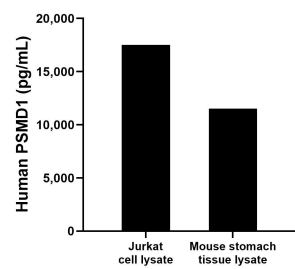
For technical support and original validation data for this product please contact:  
T: 1 (888) 4PTGLAB (1-888-478-4522) (toll free in USA), or 1(312) 455-8498 (outside USA)  
E: [proteintech@ptglab.com](mailto:proteintech@ptglab.com)  
W: [ptglab.com](http://ptglab.com)

This product is exclusively available under Proteintech Group brand and is not available to purchase from any other manufacturer.

## Selected Validation Data



Sandwich ELISA standard curve of MP00519-3, Human PSMD1 Recombinant Matched Antibody Pair - PBS only. 83521-2-PBS was coated to a plate as the capture antibody and incubated with serial dilutions of standard Ag12009. 83521-5-PBS was HRP conjugated as the detection antibody. Range: 78.1-5000 pg/mL



Mouse stomach tissue lysate and Jurkat cell lysate were measured. The human PSMD1 concentration of detected samples was determined to be 11,510.8 pg/mL in mouse stomach lysate (based on a 4.0 mg/mL extract load) and 17,515.2 pg/mL in Jurkat cell lysate (based on a 3.4 mg/mL extract load).